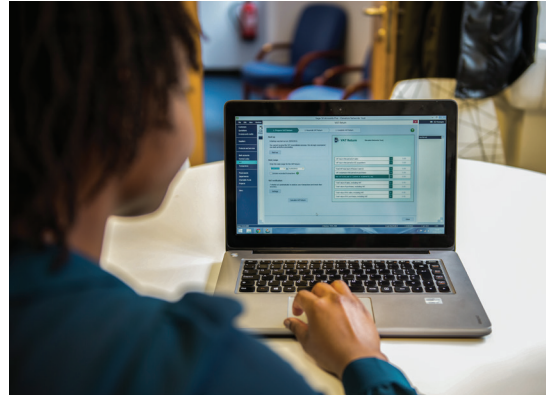


DataSecure

Eliminate the biggest risks to your backup process



Traditional offsite backup processes rely on reusable media that have a limited life span and of course, require reliable people to take them off site.

DataSecure ensures your business can continue to function in the event that your data is lost - whatever the reason - natural disaster, theft, or a computer failure.

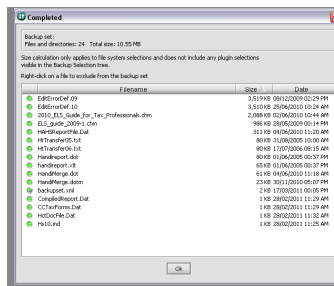
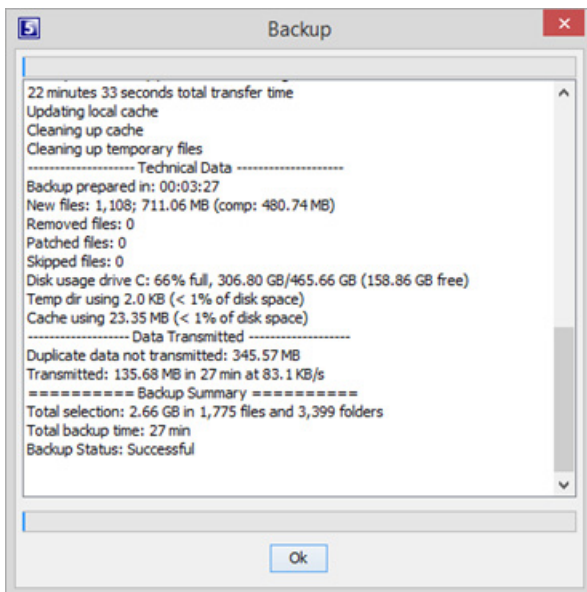
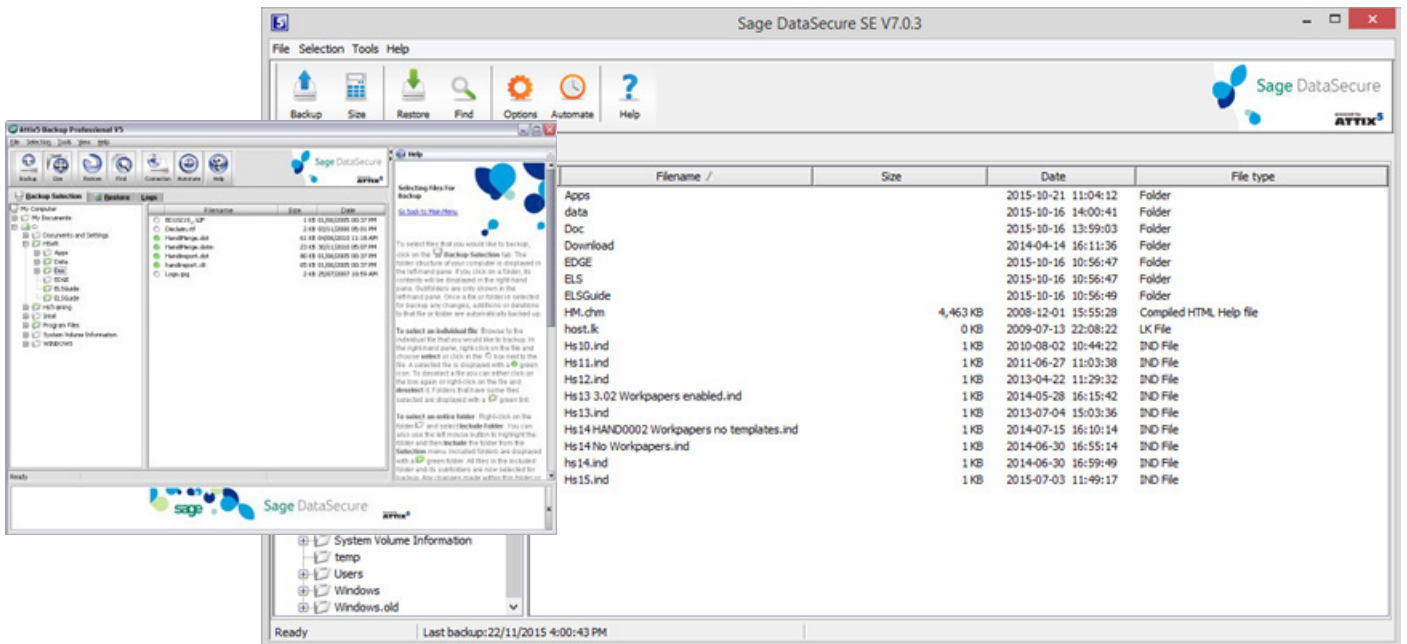
- Data is what keeps every business alive. Every day your business creates new data, in the form of transactions, documents and spreadsheets. This data is your business's lifeblood, ensuring that bills are paid, money is collected, contracts are valid and information is available for essential decision making.

What if disaster strikes?

- Consider if all your data, contacts, billing information, files and other important transactional advice was lost. You would possibly never recover and the information that had been gathered over the years would be lost forever – the personal and professional cost would be impossible to calculate.
- One in two small to medium size businesses have no recovery plan in the event of a network outage, data loss, or other IT disaster, according to a study released by Symantec, January 2011.

Prevention is the answer

- To ensure business continuity, you need a reliable, affordable, automated and secure online backup system. Used in conjunction with, or instead of, your current backup method, Sage DataSecure provides the ultimate failsafe backup solution.
- The system launches automatically at a daily scheduled time to backup all your critical data, 100% securely and offsite.
- Set, protect and forget.



Key Features

Secure from fire and theft

It is a known fact that the safest and most compliant data backup routine is one which stores vital data off-site.

Off-site backups that comprise USB drives, local magnetic tapes or DVD's taken home by company personnel are not as secure, reliable or easy to restore from as online backups.

Fully automated

Once installed, DataSecure automatically performs daily data backups at a nominated time, without any user intervention. No more relying on staff to swap backup tapes, insert USB drives or write data to a DVD or a 3rd party company to visit regularly to collect and swap disks.

It's 100% secure

Data is encrypted using 3-times bank-strength encryption and cannot be read without your account details, password and encryption key. This encryption process takes place on your side, BEFORE the data is sent along a secure communications tunnel to us. In addition, the data is located in a secure, local data centre, equipped with 24x7 security, backup generators, fire detection systems and cooling. The data backups are mirrored on 3 separate files servers in two different locations.

Status notifications

Daily email notifications confirm your backup's results so immediate action can be taken if a backup fails.

Restore data anytime, anywhere

Once uploaded to the storage platform, data can be retrieved at any time, from anywhere in the world using your browser or a web-access product, along with your account details.

All kinds of data welcome

Sage DataSecure can be used to backup ANY DATA that is nominated by you, including personal data. There is no exclusions on the types of files or data you can store. You can vary the data selection at any time by simply adding or deleting files or folders.

Reduced bandwidth impact

Many online backup solutions are "bandwidth hungry", however, Sage DataSecure uploads only incremental changes to significantly reduce the impact on your bandwidth. Initial, larger backups are loaded onto the servers, and the next online backup automatically sends only the data that has changed.

Accessible (human!) support

Sage DataSecure is a managed service, meaning real people are looking after your valuable data and are available should you require product support.

Data is recoverable "to-the-day"

Sage DataSecure is best used for data that changes on a daily basis. Our storage platform maintains 60 day's worth of daily backups. This enables you to retrieve data from any backup "to-the-day" during a 60 day period, an additional 90 day consolidation will retain data for an additional 90th day AFTER it has been de-selected for backup on the client's side. Should you require data to be kept for longer periods, you can backup the data to an archive folder that remains unchanged over time.

It's cost effective

Sage DataSecure starts from as little as \$40 per month. There are no additional charges for bandwidth or data retrieval by users. For pricing options and packages, please contact us.

More than 7,500 Australian accountants and taxation agents trust Sage HandiSoft's leading practice management, client accounting and taxation software. Sage HandiSoft's integrated suite and central client database is reliable, easy to use and highly effective for sole practitioners through to larger firms with 70+ staff.

Sage HandiSoft is a wholly owned subsidiary of the listed global Sage Group plc which has over 6 million customers and more than 12,600 employees worldwide.

For more info, visit: sagehandisoft.com.au
Call 1800 660 670 or email sales@sagehandisoft.com.au

page 3 of 3