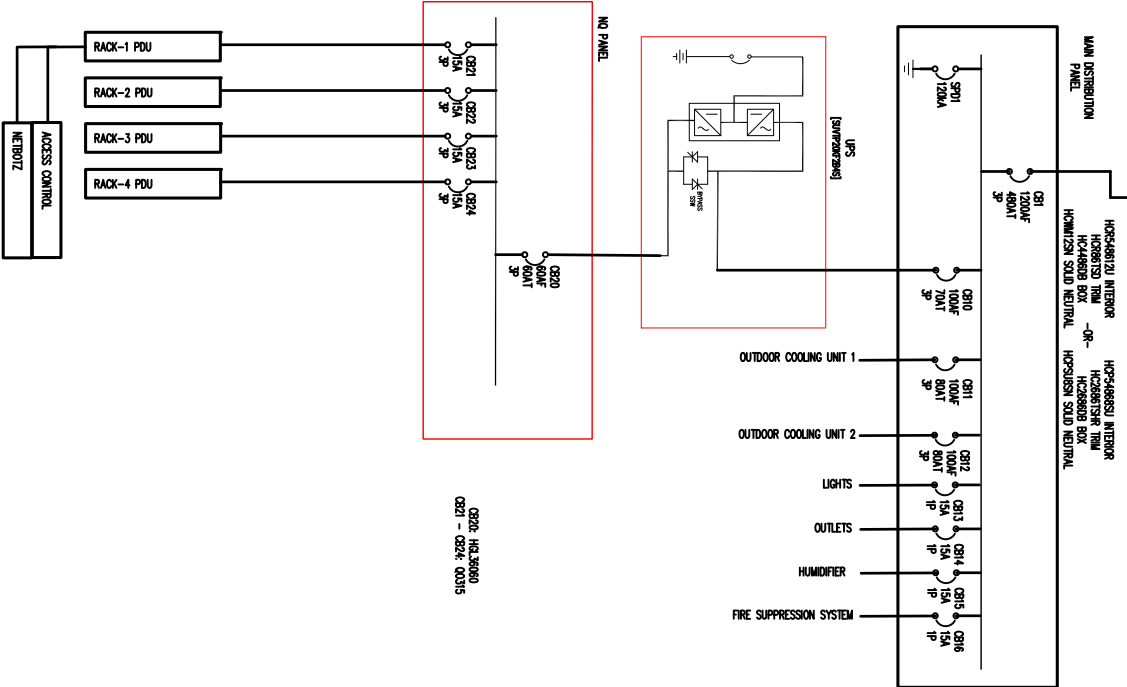
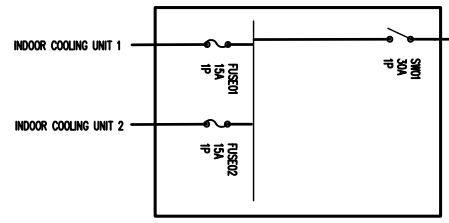


SOURCE #1	
UTILITY	208V-3PH-4WIT-3
MINIMUM CIRCUIT CAPACITY	203 AMPS
MAXIMUM VOLTAGE DROP	2 %
AFC AT POINT OF CONTAINER ENTRANCE	65 KVA



SOURCE #2	
UTILITY	208/230V-1PH-4WIT-3
MINIMUM CIRCUIT CAPACITY	17 AMPS
MAXIMUM VOLTAGE DROP	2 %
AFC AT POINT OF CONTAINER ENTRANCE	65 KVA



THIS DRAWING AND SPECIFICATIONS HEREIN ARE THE PROPERTY OF SCHNEIDER ELECTRIC AND SHALL NOT BE COPIED, REPRODUCED OR USED IN WHOLE OR IN PART AS THE BASIS FOR THE MANUFACTURE OR SALE OF ITEMS WITHOUT WRITTEN PERMISSION FROM SCHNEIDER ELECTRIC. THIS DRAWING IS BASED UPON LATEST AVAILABLE INFORMATION AND IS SUBJECT TO CHANGE WITHOUT NOTICE.



TITLE:	DWG NO.:	REV:
MODULAR DATACENTER INFRASTRUCTURE 16KW ISO NAM SCHNEIDER ELECTRIC IT MODULE SYSTEM ONE LINE DIAGRAM	PFM1CP016F1N04D	01
PROJECT: 16KW ISO NAM	DRAWN: M. UHRMAN	27 JUL 15
SHEET 1 OF 1	ENGINEER: M. UHRMAN	27 JUL 15
	APPROVED: M. UHRMAN	30 JUL 15
		ANGLE PROJECTION
		N.A.