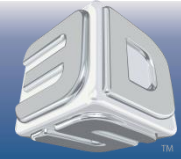


# ProJet® 3500 Max & 3510 Series

## Quick Reference Guide

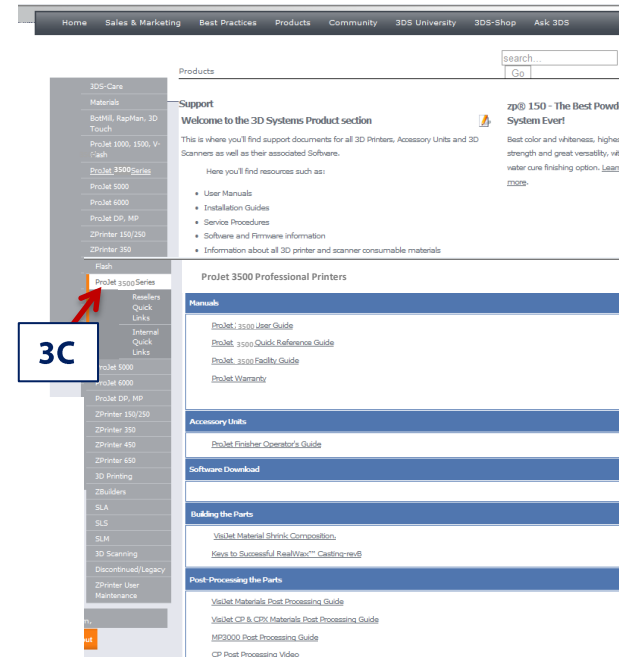
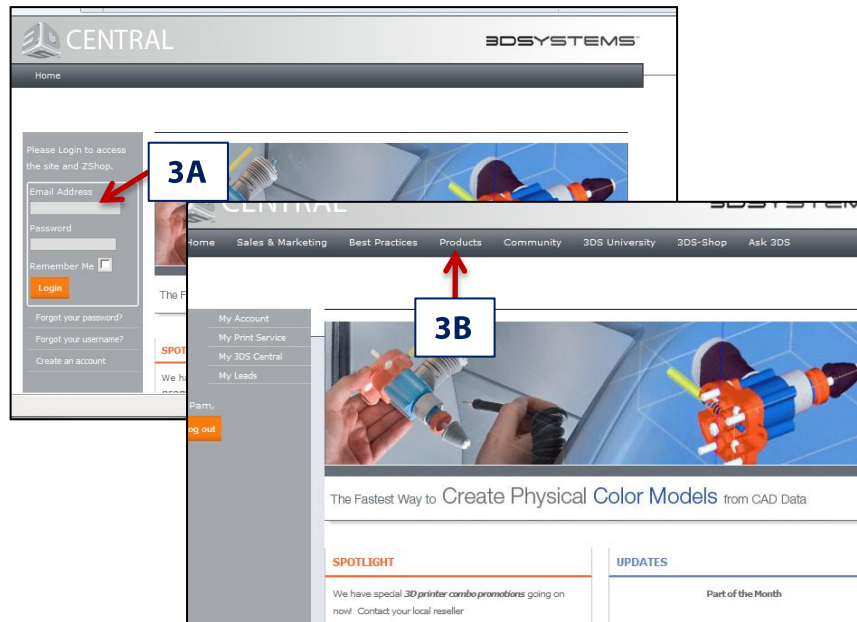


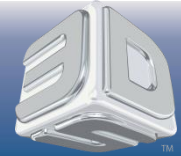
It will be necessary to register your ProJet 3-D Production System, to access the ProJet Online User Guide. To register, type in <http://3dscentral.3dsystems.com> in the web browser. You will be asked to supply a "User ID" and "Password" which should be something that is easily remembered. The printer's serial number that is located on the back side of the machine is also required during registration. Once registered, an email confirmation will be sent to you with a link to 3D Systems' 3DS Central login page. (<http://3dscentral.3dsystems.com>). Please log in using your user name and password to access the user guide.

## 1 CUSTOMER'S 3D CENTRAL ACCESS

This quick reference guide will give you basic instructions on how to get your printer ready to successfully build your first part. For more detailed instructions, please access the ProJet™ 3500 Max and 3510 Series User Guide by logging into <http://3dscentral.3dsystems.com>.

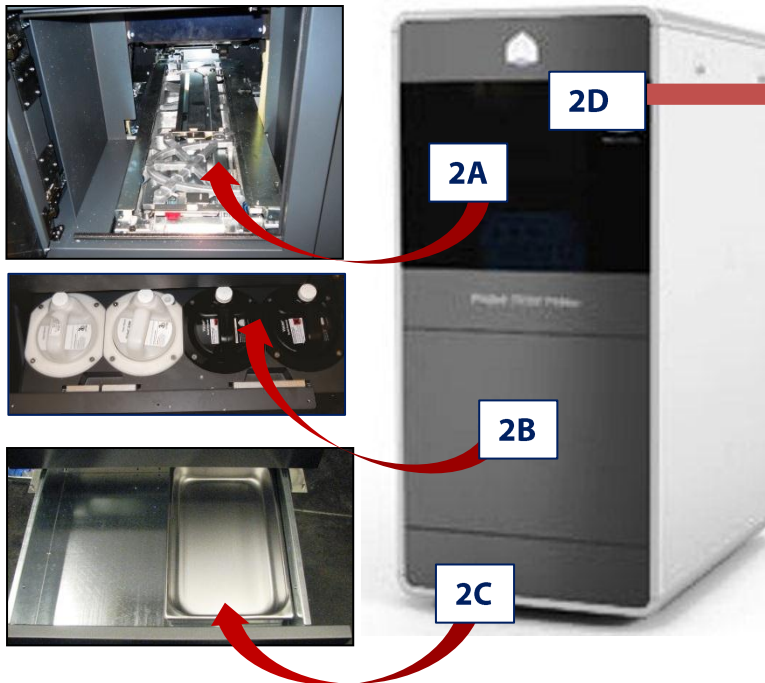
- Enter your email address and the password that was sent in the confirmation email.
- Once in 3DS Central, click on "Product" located at the top menu bar.
- Next, click on ProJet 3500 Series located on the side bar; your user guides and other valuable printer documents are located here. Click on the document to open or download a copy to save.





## 2 FAMILIARIZATION

ProJet™ Accelerator Software has been installed on your computer system by 3D Systems' authorized ProJet™ Service Technician or reseller during the installation of your printer. Please read "TIPS for Our Customer" to get the best possible experience with the material delivery system on your new ProJet® 3500Max & 3510 systems.



**2A Build chamber** **2B Support and part material module**  
**2C Waste drawer and waste pan** **2D Operator Panel**

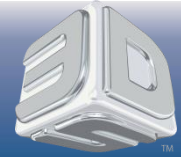
Support materials (white cartridges) are installed into the two modules on the left side of drawer. The part materials (black cartridges) are installed into the two modules on the right side of drawer.

### Operator's Panel



For more information on these functions, please refer to the ProJet 3500Max and 3510 Series User Guide.

- A. Printer State:** Indicates what state the printer is in
- B. Print Name:** The name of the print job that is currently printing; click on the magnify glass to view the build as it is printing
- C. Printer Control:** Indicates if printer is online/offline
- D. Printer Control:** Abort a print job
- E. Chamber Light:** Press button to turn chamber light On/Off
- F. Percentage Bar:** Shows the percentage of print job that is completed
- G. Message:** prompts the user when they are required to interface with the printer



### 3 POWER SUPPLY

Verify facility's electrical service rating before connecting power to the printer.

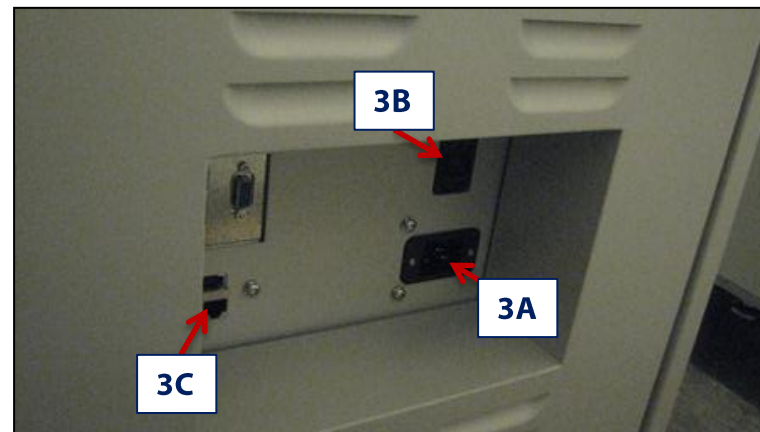
**Facility electrical requirement:**

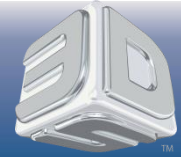
Grounded, 1-phase electrical circuit

Service rating: 100–127 VAC, 50/60 Hz, 15A (max.)

- Plug power cord into power outlet(3A) (located at the backside of printer) and into facility's power outlet.
- Switch power on (3B).
- Plug RJ-4C cable (3C) into terminal (located at the backside of printer) and into computer's USB terminal.

**NOTE: A shielded Ethernet cable is required when connecting from the printer to the end user's computer.**



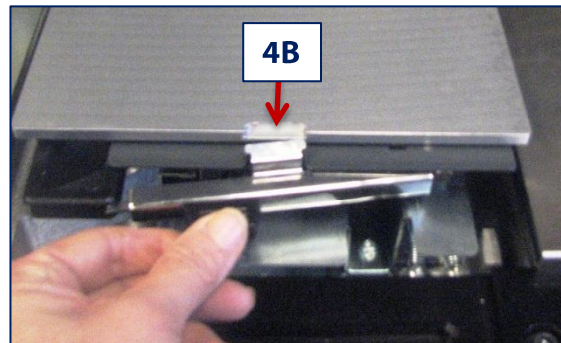


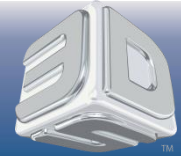
### 4

#### PRINT PLATFORM INSTALLATION

**NOTE: Clean platform using Isopropyl Alcohol before installing into printer.**

- Open the chamber door.
- Align platform's rear notch into x-carriage's locating tab at the back of carriage (4A).
- Align platform's front notch (4B) front locating tab.
- Slide the latch release back and insert latch's tab into the build plate front notch.
- Release latch to secure print platform.
- Close the front door and press "Online/Offline" (4C) on operator's panel to bring the printer online.
- **To remove the platform**, push latch back and lift platform from x-carriage.



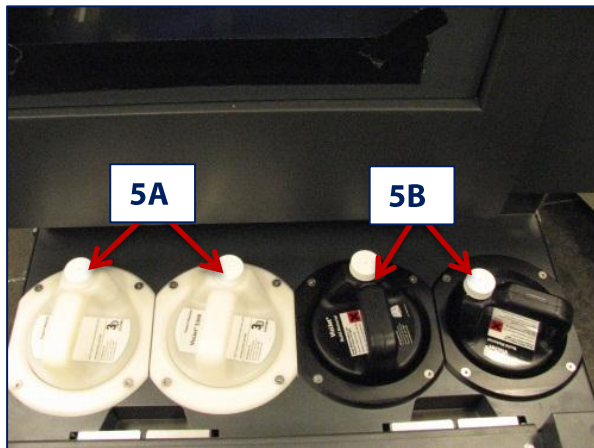


**CAUTION:** Adhere to all personal, and safe handling of materials described in the Material Safety section in the ProJet 3500Max and 3510 Series User Guide. Always follow MSDS / SDS guidelines and local regulations regarding handling and disposal of regulated materials. Keep disposal records if local law requires.

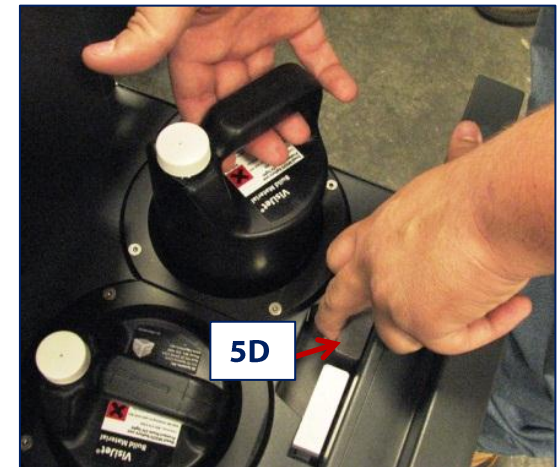
**5**

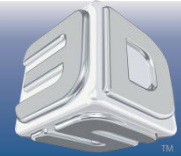
## MATERIAL CARTRIDGE INSTALLATION

- After powering on the printer, there is a 15 minute warmup period before the material cartridges can be installed. The user touchscreen operator's panel will instruct when the printer is warm enough to install material cartridges.
- After the printer warms up, open the material drawer to install support and part material cartridges.
- Install two white support material cartridges into the two left material modules (**5A**) and install the two black part material cartridges into the two right material modules (**5B**).
- Press down on cartridge handles to ensure they are fully seated into modules (**5C**).



**To remove material cartridge**, lift up the lever (**5D**) in front of material module to release cartridge; pull cartridge out.





**CAUTION:** Adhere to all personal, and safe handling of materials described in the Material Safety section in the ProJet 3500Max and 3510 Series User Guide. Always follow MSDS / SDS guidelines and local regulations regarding handling and disposal of regulated materials. Keep disposal records if local law requires.

6

## WASTE DRAWER PAN INSTALLION AND PAN REMOVAL

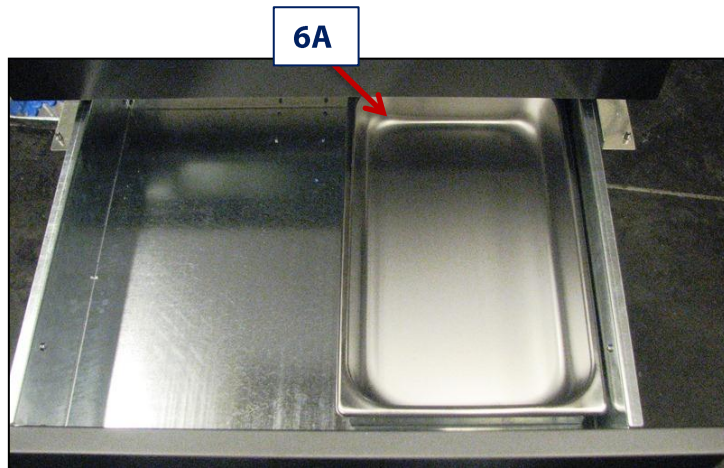


**CAUTION:** Before removing waste materials from the waste drawer, adhere to all personal, and safe handling of materials described in the ProJet 3500 Max and 3510 Series User Guide under "Material Safety." Keep disposal records if local law requires.



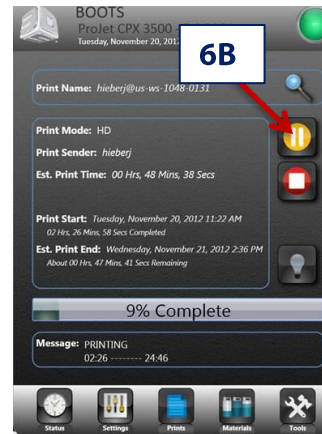
### To install waste pan:

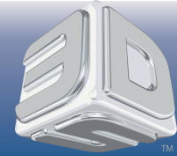
- Open the waste drawer and place the waste pan (6A) in the right side of drawer. Close waste drawer.



### To remove waste pan:

- If the printer is idle, open the waste drawer. If the printer is operating, press "Pause" (6B) on the Status Screen. When pause is completed, open waste drawer.
- Remove waste pan and place it in the plastic bag.
- Dispose of waste material according to your local law.
- Replace the waste pan in the right side of drawer.
- Close drawer and press "Pause" again to resume build. The icon will return to Online/Offline button.





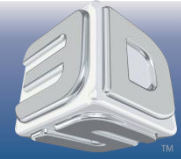
## 7 OPERATION

To ensure that the printer is functioning properly, a test print is recommended. The test build is provided on the ProJet hard drive. The test print file consist of 1 layer strips of materials, one strip for support material and one strip for part material. The Demo Print is an actual part file that you can use as a test build. Please follow the operation procedure described below.

### To Start a Test Print or Print Demo:

- Ensure that the platform is clear and the door is closed. Click on the Online/Offline button (7A) to bring printer Offline.
- Click on the “Tools” icon (7B) and select “Print Diagnostics” (7C) on the menu. Select “Test Print” or “Demo Print” (7D) and click on “Yes” (7E) to confirm printer is online.. The printer will begin printing. If printer is offline, click “No” and return to the “Status Screen” to take printer Offline. Return to the “Test Print / Demo Print” menu to start your print.
- After the print is completed, the message “Remove Print” will display in the “Messages” dialog box. Open the printer door, and remove the print platform as described in Step 4, “Print Platform Installation.” To remove part removal and post processing instructions, refer to VisiJet® Part Processing User Guide located in 3DS Central.





### 8 SHUTTING DOWN SYSTEM

- Verify that printer is not building.
- Press “Tools” (8A) on the status screen and select “Printer Shutdown” (8B) on the menu screen. Select “Printer Shutdown” (8C); a dialog box will appear asking for confirmation (8D); Select “Yes.” The “Status” screen will appear and a message will display in the “Message Dialog Box” stating “OK TO POWER OFF XXX (8E). Once this message appears, it will be safe to press the power switch to off on the rear panel.

