

Your Wireless World
Perfect reception across the waves

Marine antenna Catalogue



WWW.2J-ANTENNAE.COM



Introduction

2J is a worldwide supplier of antenna solutions casting our net over Automotive, Marine, Telematic, Automation and M2M markets.

With our two RF development sites in the UK and Slovakia, we have developed a reputation for engineering excellence and self-sufficiency, allowing us to provide rapid custom antenna solutions, supplementing our extensive range of off-the-shelf antenna.

We utilise a plethora of modern engineering tools, from network analysers and anechoic chambers, to simulation software and 3D printers. These tools help reduce design phases, and enable us to react to our customers' needs promptly and efficiently.

Our ISO/TS16949:2009 certified production site in Central Europe ensures production of the highest quality products. Our antennas are all manufactured under the RoHS directive and are REACH compliant. Plastic injection, SMD pick and place, product assembly and quality control are all carried out in house, aiding us to be flexible in manufacturing and provide competitively priced products.

Our close-knit team of engineers and commercial personnel have established strong bonds with customers and suppliers, ensuring a good communication of needs, requirements and solutions.

Ensuring the continued development of products to meet the rapidly evolving wireless world remains our primary focus, be it for 4G (LTE), Iridium communications or Galileo satellite based applications. We work closely with technological innovators to ensure that we have a clear vision for future projects, maintaining our strong position in commercial antenna design.



Customisation



RF measurement



3D anechoic chambers



EM Simulations



Prototyping service



3D printing



Plastic injection



Coaxial cable assembly





2J UK



2J Slovakia



Made in Europe

ISO/TS 16949:2009
Automotive standards

EN ISO 14001:2004
Environmental



Contacts:

2J s.r.o

Stefanikova 61
085 01 Bardejov
Slovak Republic

☎ +421 54 4880130
✉ sales@2j-antennae.com

2J UK Ltd.

21-22 The Slipway
Marina Keep, Port Solent
Hampshire, PO6 4TR
United Kingdom

☎ +44 (0)2392 385985
✉ steve@2j-antennae.com



WWW.2J-ANTENNAE.COM

Note: Cable types, lengths, connector types and housing colour upon request.

The Guidelines for antenna samples and mounting possibilities

2J90xxXXX series

„0“ Means, that antenna is made undetachable.

— **2J90xx** (without additional suffix)

It means, that antenna is built with bracket and has connector inside



— **2J90xxA** (with additional suffix **A**) —

It means, that antenna is built without bracket and has connector inside

— **2J90xxC** (with additional suffix **C**) —

It means, that antenna is built with bracket and has solid cable inside



— **2J90xxAC** (with additional suffixes **AC**) —

It means, that antenna is built without bracket and has solid cable inside

2J91xxXXX series

„1“ Means, that antenna is made detachable and self configurable according to your needs or each version can be sold separately. A cable exits from the center of the antenna.

— 2J91xx (without additional suffix)

It means, that antenna is built with bracket and has solid cable inside. Antenna can be detached to versions **A**, **AB**, **B** and **P** (marked as 2J93xxP). All components needed for these four versions of antenna are included.



— 2J91xxAB (with additional suffixes AB)

It means, that antenna is built without bracket and has solid cable inside. Antenna can be detached to versions **A** or **B**. All components needed for these two versions of antenna are included.



— 2J91xxA (with additional suffix A)

It means, that antenna is built without bracket and has solid cable inside. Antenna can be detached, but it does not include any components for making other versions of the antenna.



— 2J91xxB (with additional suffix B)

It means, that antenna is built without bracket and has solid cable inside. Antenna can not be detached, and it does not include any components for making other versions of the antenna.



— 2J93xxP (with additional suffix P)

It means, that antenna is built without bracket and has solid cable inside. Antenna can not be detached, and it does not include any components for making other versions of the antenna.

The same antenna as on page 7



2J92xxXXX series

„2“ Means, that antenna is made detachable and self configurable according to your needs or each version can be sold separately. A cable exits from the side of the antenna or bracket.

— 2J92xx (without additional suffix) —

It means, that antenna is built with bracket and has solid cable inside. Antenna can be detached to versions **A**, **AB**, **B** (marked as 2J91xxB) and **P** (marked as 2J93xxP). All components needed for these four versions of antenna are included.



— 2J92xxAB (with additional suffixes **AB**) —

It means, that antenna is built without bracket and has solid cable inside. Antenna can be detached to versions **A** or **B**. All components needed for these two versions of antenna are included.

— 2J92xxA (with additional suffix **A**) —

It means, that antenna is built without bracket and has solid cable inside. Antenna can be detached, but it does not include any components for making other versions of the antenna.



— 2J91xxB (with additional suffix **B**) —

It means, that antenna is built without bracket and has solid cable inside. Antenna can not be detached, and it does not include any components for making other versions of the antenna.



The same antenna as on page 5

— 2J93xxP (with additional suffix **P**) —

It means, that antenna is built without bracket and has solid cable inside. Antenna can not be detached, and it does not include any components for making other versions of the antenna.

The same antenna as on page 7

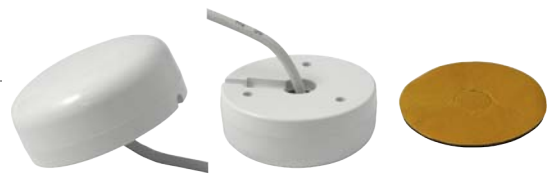


2J93xxXXX series

„3“ Means, that antenna is made undetachable.
Antenna has version with possibility to Magnetic mount or Patch mount, or each version can be sold separately.

— 2J93xxMP (with additional suffixes MP) —

It means, that antenna is built without bracket and has solid cable inside.
Antenna can be used as versions M or P.
All components needed for these two versions of antenna are included



— 2J93xxM (with additional suffix M) —

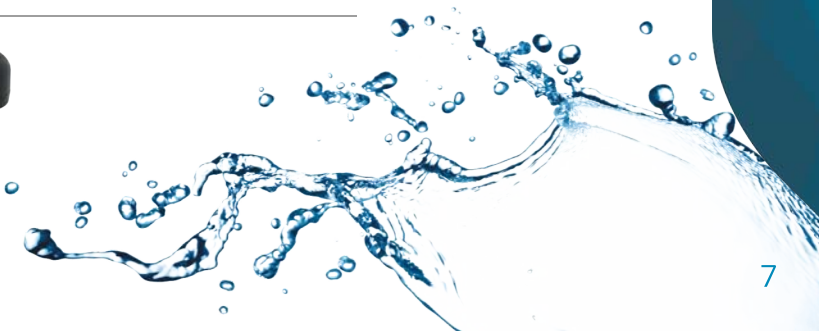
It means, that antenna is built without bracket and has solid cable inside.
Antenna does not include any components for making other versions of the antenna.

— 2J93xxP (with additional suffix P) —

It means, that antenna is built without bracket and has solid cable inside.
Antenna does not include any components for making other versions of the antenna.



Colours available for 9xxx series antenna



2J9001 | 2J9101 | 2J9201 | 2J9301



Cable 1

Frequencies	GPS/GLONASS (1.572-1.610 MHz)
Impedance	50 Ohms
Polarisation	RHCP
LNA Gain	23 dB at 3V, 24 dB at 5V
VSWR	< 1.2:1
Voltage supply	2.7 V - 5.5 V
Current	15 mA to 25 mA
Power (max.)	138 mW
Note	Antenna is filtered (Filter placed after amplifier)

General specification

IP certificate	IP67
Operating temperature	-40 °C to +85 °C

Note: For dimensions check product datasheet

This antenna is available in versions:

2J9001, 2J9001A, 2J9001C, 2J9001AC
 2J9101, 2J9101AB, 2J9101A, 2J9101B
 2J9201, 2J9201AB, 2J9201A
 2J9301MP, 2J9301M, 2J9301P

See pages 4 - 7 for guidelines for antenna samples and mounting possibilities.

2J9007 | 2J9107 | 2J9207 | 2J9307



Cable 1

Frequencies	TETRA (380-500 MHz)
Impedance	50 Ohms
Polarisation	Vertical
Gain	2 dBi
VSWR	< 2:1
Power handling	25 W

Cable 2

Frequencies	GPS/GLONASS (1.572-1.610 MHz)
Impedance	50 Ohms
Polarisation	RHCP
LNA Gain	23 dB at 3V, 24 dB at 5V
VSWR	< 1.2:1
Voltage supply	2.7 V - 5.5 V
Current	15 mA to 25 mA
Power (max.)	138 mW
Note	Antenna is filtered (Filter placed after amplifier)

General specification

IP certificate	IP67
Operating temperature	-40 °C to +85 °C

Note: For dimensions check product datasheet

This antenna is available in versions:

2J9007C, 2J9007AC
2J9107, 2J9107AB, 2J9107A, 2J9107B
2J9207, 2J9207AB, 2J9207A
2J9307MP, 2J9307M, 2J9307P

See pages 4 - 7 for guidelines for antenna samples and mounting possibilities.



2J9013 | 2J9113 | 2J9213 | 2J9313



Cable 1

Frequencies	DVB-T (440-870 MHz)
Impedance	75 Ohms
Polarisation	Linear
LNA Gain	25 dB
VSWR	< 3:1
Power handling	50 W
Voltage supply	5 V - 24 V
Current	13 mA
Power (max.)	312 mW

General specification

Operating temperature	-40 °C to +85 °C
------------------------------	------------------

Note: For dimensions check product datasheet

This antenna is available in versions:

2J9013, 2J9013A, 2J9013C, 2J9013AC
 2J9113, 2J9113AB, 2J9113A, 2J9113B
 2J9213, 2J9213AB, 2J9213A
 2J9313MP, 2J9313M, 2J9313P

See pages 4 - 7 for guidelines for antenna samples and mounting possibilities.



Cable 1

Frequencies	IRIDIUM (1.616-1.626 MHz)
Impedance	50 Ohms
Polarisation	RHCP
Gain	3 - 5 dBiC
VSWR	< 1.5:1
Power handling	25 W

General specification

IP certificate	IP67
Operating temperature	-40 °C to +85 °C

Note: For dimensions check product datasheet

This antenna is available in versions:
2J9026, 2J9026A, 2J9026C, 2J9026AC
2J9126, 2J9126AB, 2J9126A, 2J9126B
2J9226, 2J9226AB, 2J9226A
2J9326MP, 2J9326M, 2J9326P

See pages 4 - 7 for guidelines for antenna samples and mounting possibilities.



2J9033H | 2J9133H | 2J9233H | 2J9333H



Cable 1

Frequencies	IRIDIUM (1.616-1.626 MHz)
Impedance	50 Ohms
Polarisation	RHCP
Gain	3 dBiC
VSWR	< 1.5:1

Cable 2

Frequencies	GPS/GLONASS (1.572-1.610 MHz)
Impedance	50 Ohms
Noise figure	1.15 dB
Polarisation	RHCP
Patch Gain	3 dBiC min. at zenith
LNA Gain	23 dB at 3V, 24 dB at 5V
VSWR	< 1.2:1
Voltage supply	2.7 V - 5.5 V
Current	15 mA to 25 mA
Power (max.)	138 mW
Note	Antenna is filtered (Filter placed after amplifier)

General specification

IP certificate	IP67
Operating temperature	-40 °C to +85 °C

Note: For dimensions check product datasheet

This antenna is available in versions:

2J9033H, 2J9033HA
 2J9133H, 2J9133HAB, 2J9133HA, 2J9133HB
 2J9233H, 2J9233HAB, 2J9233HA
 2J9333HMP, 2J9333HM, 2J9333HP

See pages 4 - 7 for guidelines for antenna samples and mounting possibilities.

2J9036 | 2J9136 | 2J9236 | 2J9336



Cable 1

Frequencies	AIS (162 MHz)
Impedance	50 Ohms
Polarisation	Vertical
VSWR	< 2:1 at center
Power handling	25 W

General specification

Operating temperature	-40 °C to +85 °C
------------------------------	------------------

Note: For dimensions check product datasheet

This antenna is available in versions:
2J9036, 2J9036A, 2J9036C, 2J9036AC
2J9136, 2J9136AB, 2J9136A, 2J9136B
2J9236, 2J9236AB, 2J9236A
2J9336MP, 2J9336M, 2J9336P

See pages 4 - 7 for guidelines for antenna samples and mounting possibilities.



2J9037 | 2J9137 | 2J9237 | 2J9337



Cable 1

Frequencies	AIS (162 MHz)
Impedance	50 Ohms
Polarisation	Vertical
VSWR	< 2:1 at center
Power handling	25 W

Cable 2

Frequencies	GPS/GLONASS (1.572-1.610 MHz)
Impedance	50 Ohms
Polarisation	RHCP
LNA Gain	23 dB at 3V, 24 dB at 5V
VSWR	< 1.2:1
Voltage supply	2.7 V - 5.5 V
Current	15 mA to 25 mA
Power (max.)	138 mW
Note	Antenna is filtered (Filter placed after amplifier)

General specification

Operating temperature	-40 °C to +85 °C
------------------------------	------------------

Note: For dimensions check product datasheet

This antenna is available in versions:

2J9037C, 2J9037AC
 2J9137, 2J9137AB, 2J9137A, 2J9137B
 2J9237, 2J9237AB, 2J9237A
 2J9337MP, 2J9337M, 2J9337P

See pages 4 - 7 for guidelines for antenna samples and mounting possibilities.

2J94xx | 2J9454 | 2J9438 | 2J9430

Omnidirectional *for outdoor use*
antenna



- Fully waterproof construction
- Stylish aesthetic design
- Variable mounting options
- Configure your antenna options
- Cables and connectors upon request



DVB T / FM
TERRESTRIAL

Cable 1

Frequencies DVB-T / FM

Cable 2

Frequencies GPS

Cable 3

Frequencies GSM

Cable 4

Frequencies WIFI

Cable 5

Frequencies DAB

Amplifier

LNA Gain Variable from:
-7 dB to 29 dB

General specification

IP certificate IP69K for antenna

Operating temperature -25 °C to +55 °C

Dimensions 212 × 280 × 280 mm
(H × W × L)

This antenna is available in versions:

2J9454 - antenna includes **Cable 1** **Cable 2** **Cable 3** **Cable 4** **Cable 5**

2J9438 - antenna includes **Cable 1** also possible version with **Amplifier**

2J9430 - antenna includes **Cable 1** **Cable 2**

or you can configure your own antenna option



2J s.r.o

Stefanikova 61
085 01 Bardejov
Slovak Republic

☎ +421 54 4880130

✉ sales@2j-antennae.com

2J UK Ltd.

21-22 The Slipway
Marina Keep, Port Solent
Hampshire, PO6 4TR
United Kingdom

☎ +44 (0)2392 385985

✉ steve@2j-antennae.com



antenna conceptor

WWW.2J-ANTENNAE.COM