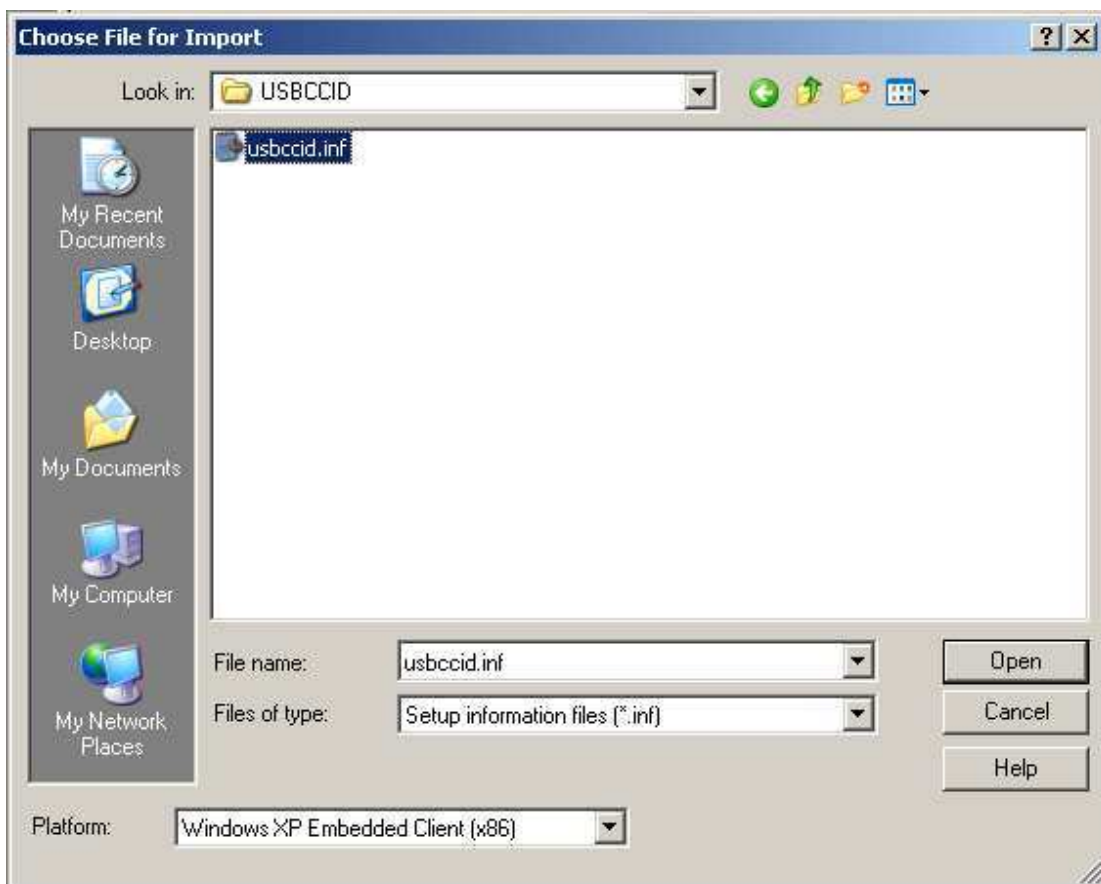
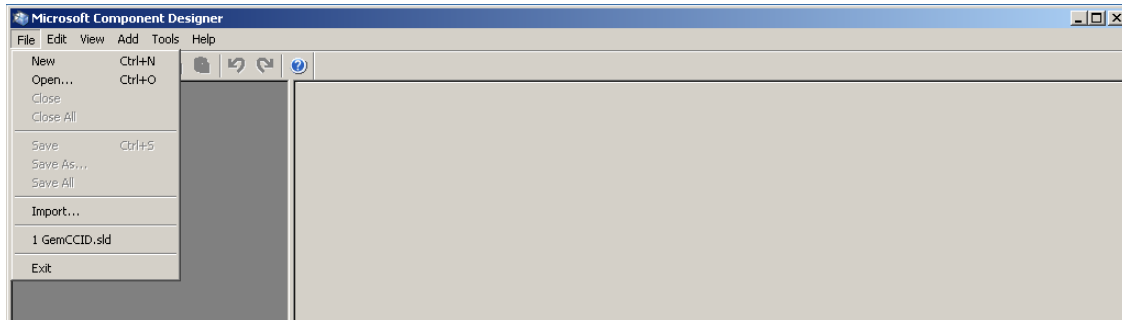
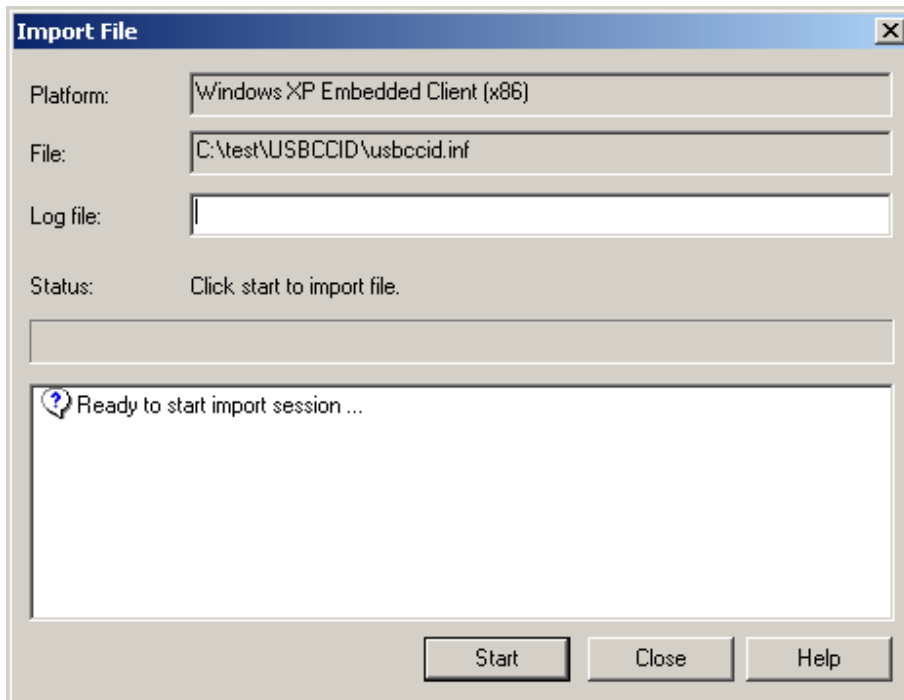
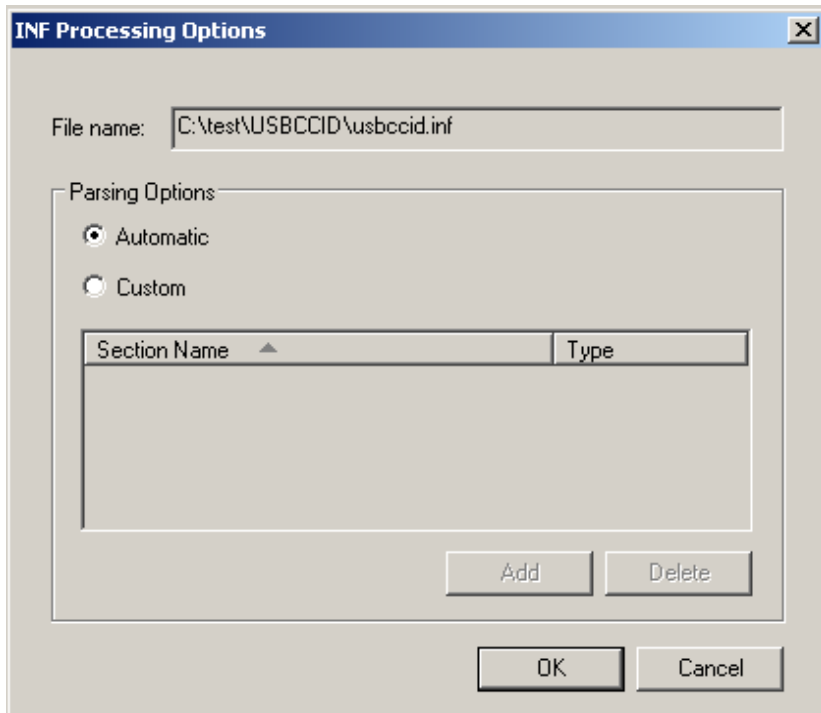
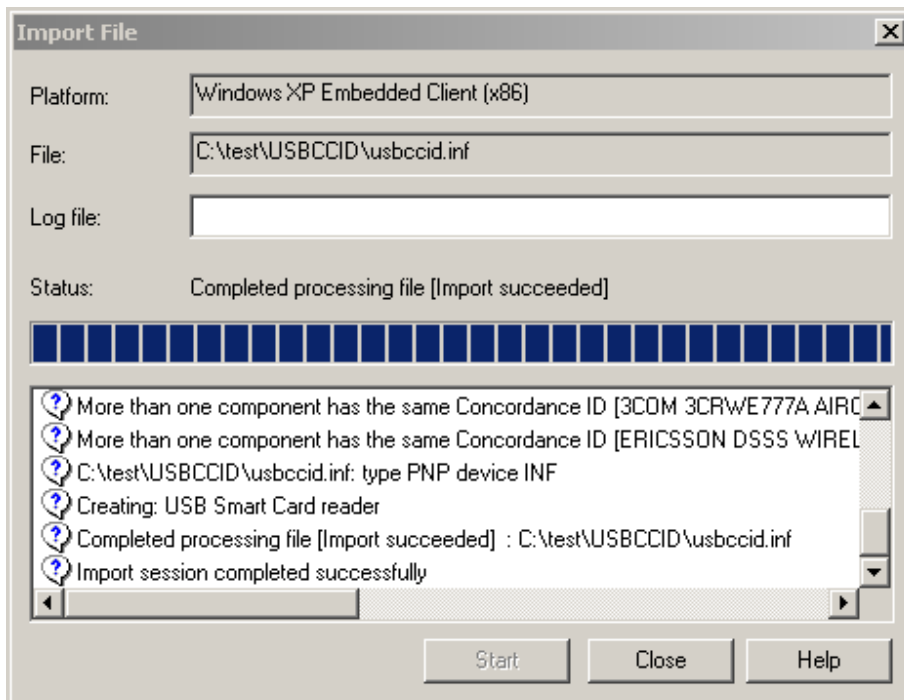


How to create a driver component from a XP driver on XPEmbedded

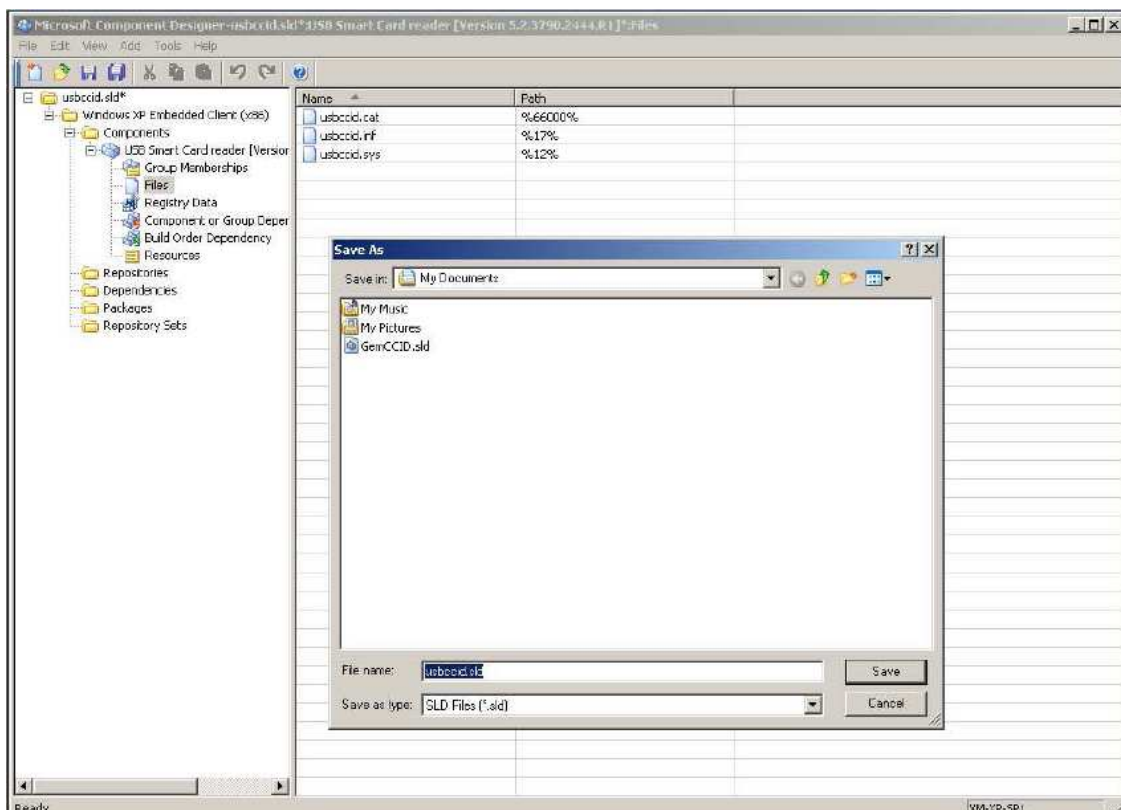
Launch the XPE Component Designer
Import the .XP driver INF file in the sld



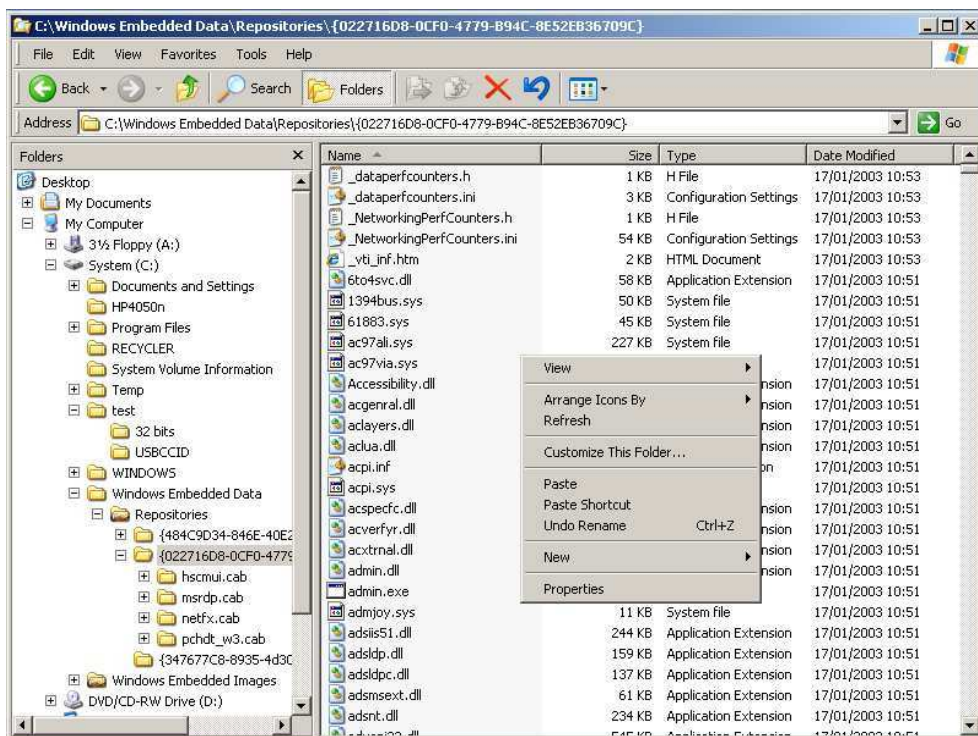
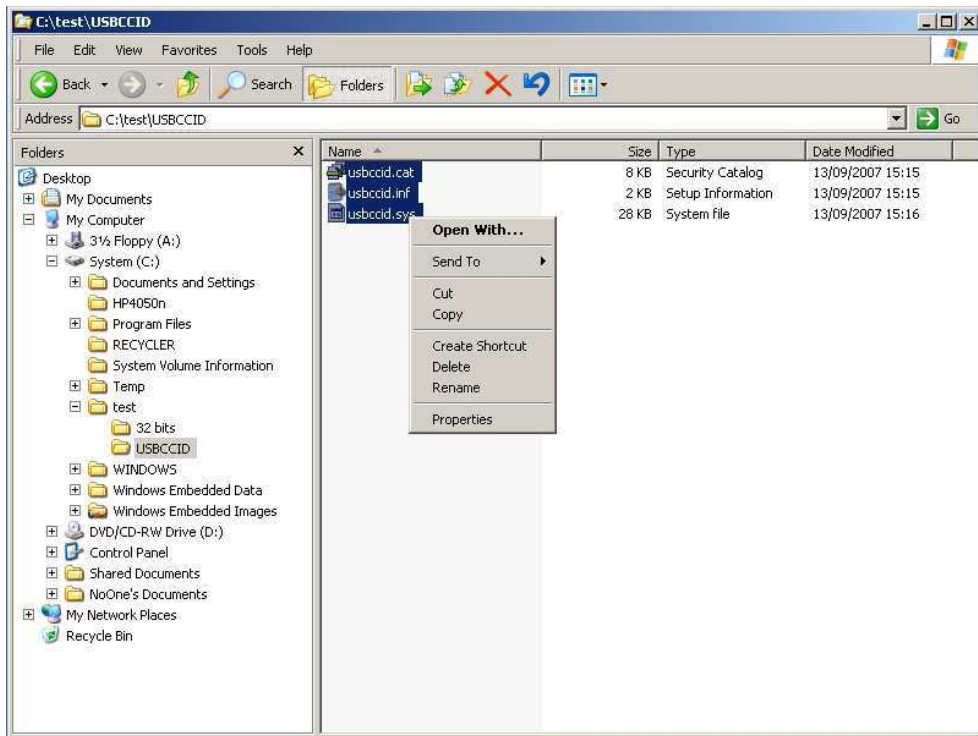




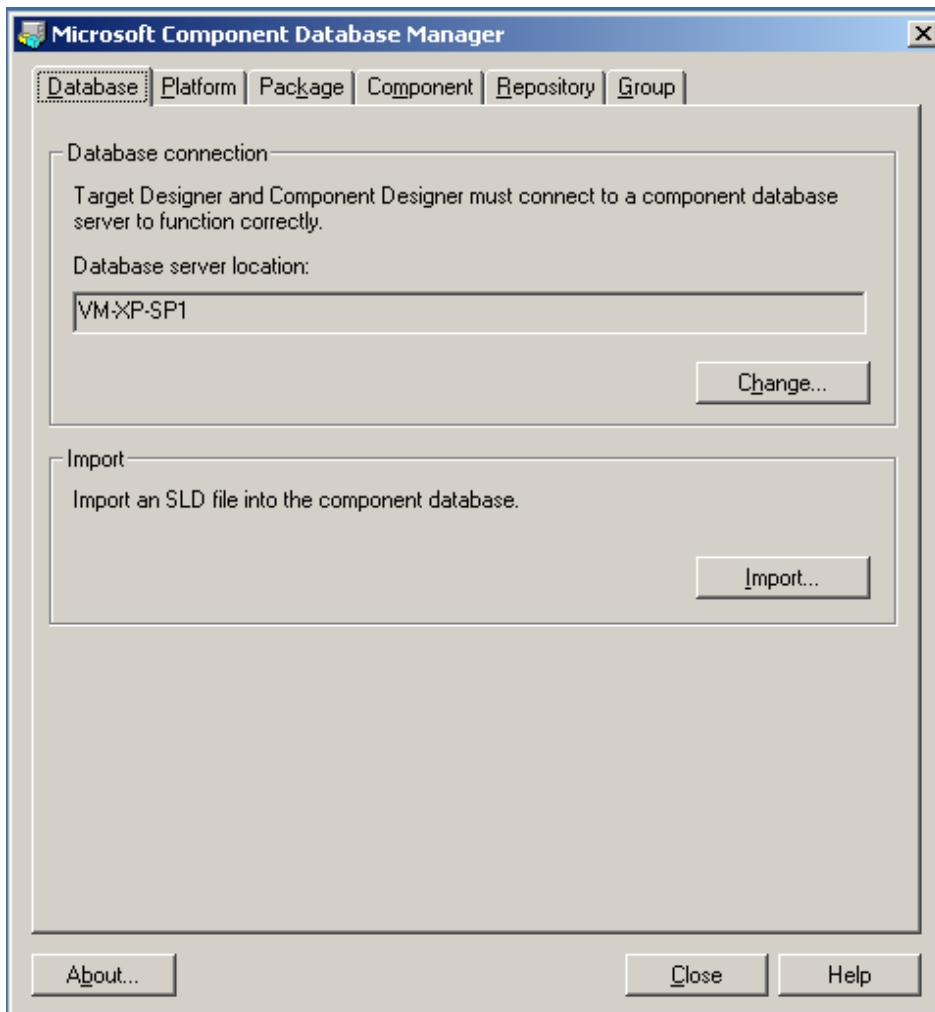
Close the Import File
Save the .sld

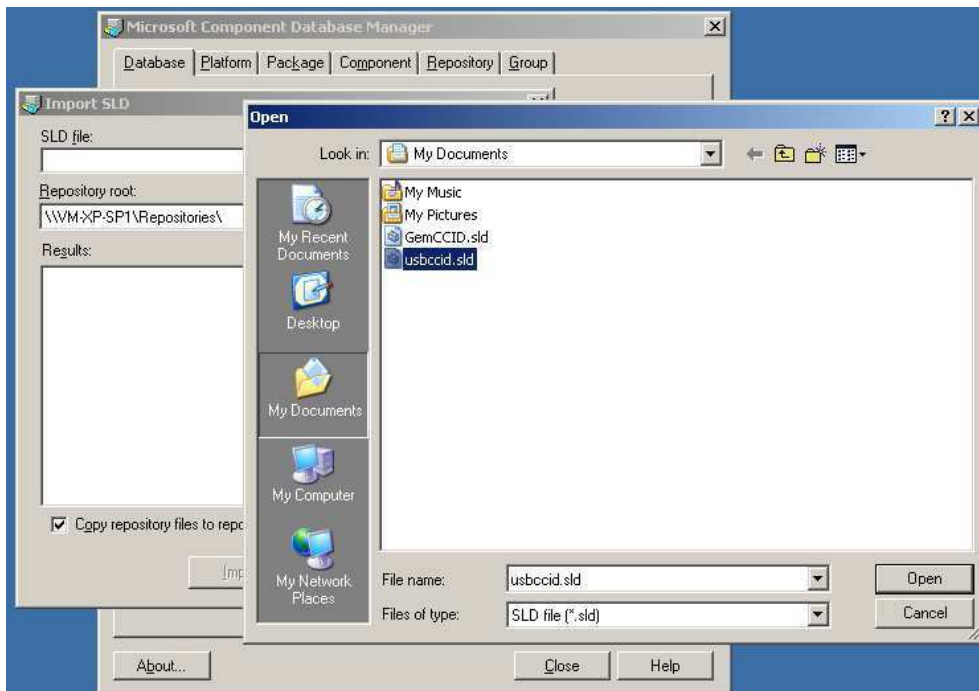
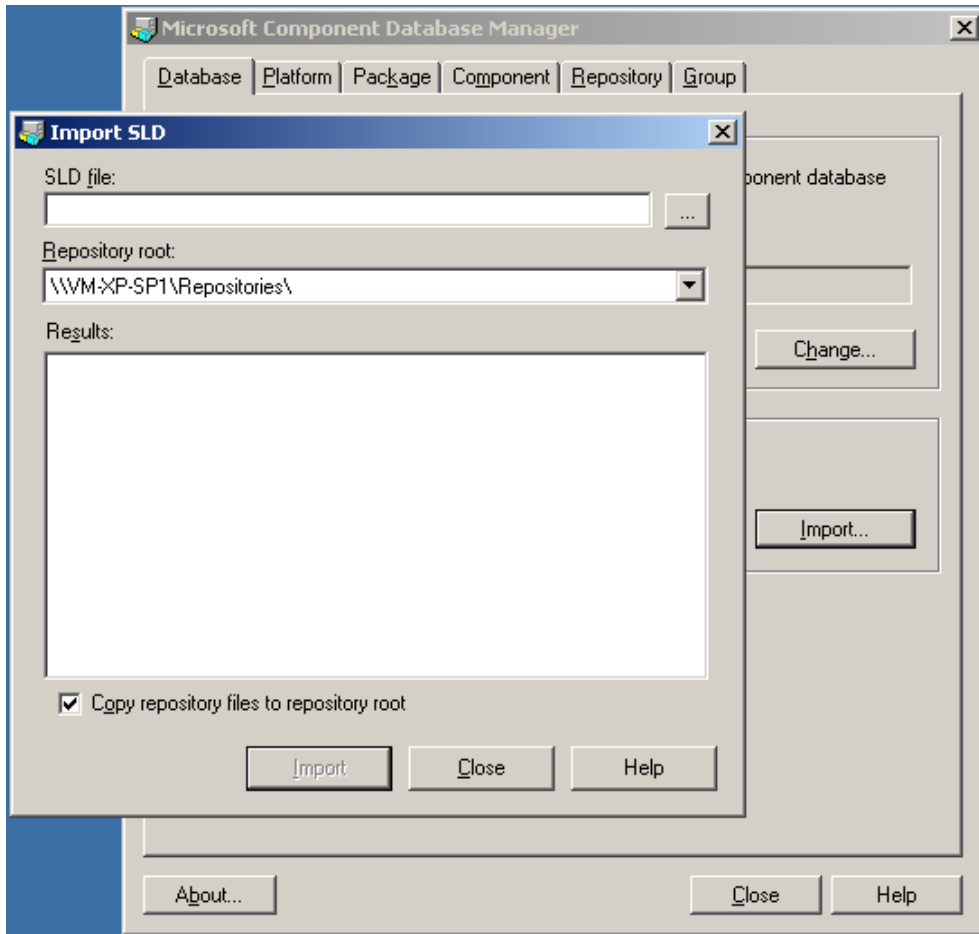


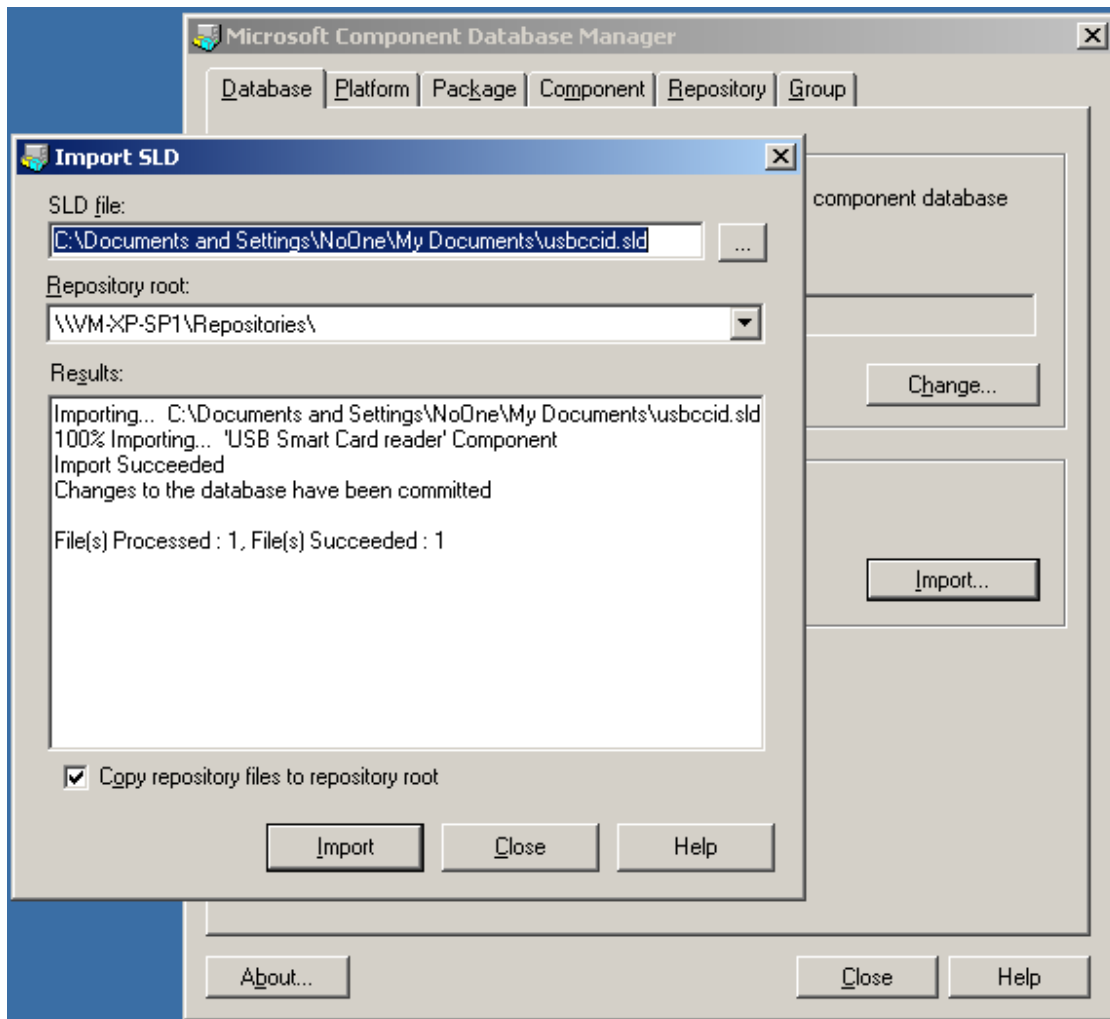
In the explorer, copy the 3 driver files (.inf, .sys and .cat) to the driver repository of Windows Embedded Data



Add the new component .sld to the database using « Import... »







Launch the Target Designer

Search for the name given to the device by the .inf inside the component list.

Typically it is « USB Smart Card Reader » for the Microsoft Class driver we just added.

Once found, add it to the XPE image in construction.

Then launch the “Check Dependency of the Build actions”.

The screenshot shows the Microsoft Target Designer interface for a project named 'celsius400adv02.slx'. The main window is divided into several panes:

- Component Browser (Left):** Displays a tree view of components. The search filter is set to 'All Components' and the search term is 'USB Smart Card Reader'. A list of 9950 components is shown, with 'USB Smart Card reader' selected.
- Component List (Middle):** Shows a list of installed components. The selected component is 'USB Smart Card reader [Version 5.2.3790.2444, R2]'. Other components include Terminal Services, USB Composite Device, and Video Codecs.
- Properties (Right):** Shows the configuration for the selected component. Fields include Name (USB Sr), Description (USB Sr), Version (5.2.379), Revision (2), Packages (Window), Categories (Hardware System), and Visibility (1000).
- Log (Bottom):** Displays the following messages:


```

Starting configuration activation at: 13/09/2007 15:57:16...
CFDB: 3,49 secs, 43 reqs. LAB: 3,50 secs, 43 reqs, 0% hits, 0 entries
Activation complete, elapsed time: 12,74 seconds
No errors or warnings

Info 101: Initializing new component: "USB Smart Card reader [Version 5.2.3790.2444, R2]"
Warning 1116: Adding unreleased component to configuration: "USB Smart Card reader [Version 5.2.3790.2444, R2]"
Info 101: Estimated footprint: 65536 Bytes
      
```