

How to generate a SmartDiag Report (with SmartDiag Diagnosis Tool v2.0).

Purpose

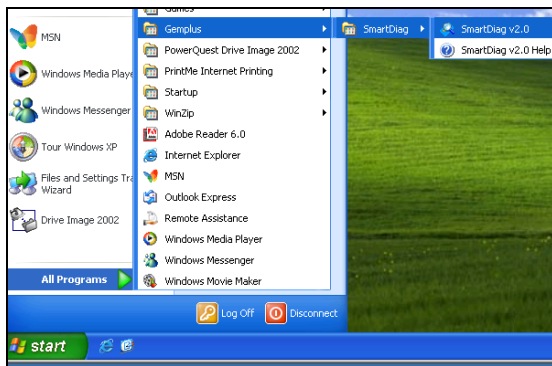
This procedure describes how to generate a Smartdiag report using the Smartdiag Diagnosis Tool v2.0

Get the tool

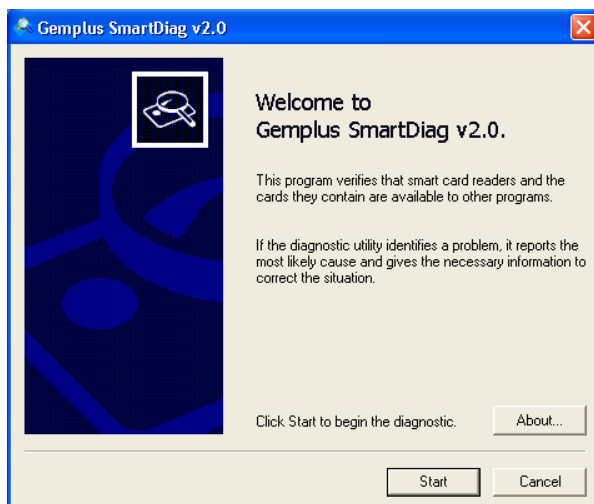
1. Download the **Smartdiag Diagnosis Tool v2.0** using the following link
http://support.gemalto.com/fileadmin/user_upload/drivers/ToolsAPISamples/SmartDiag_Diagnosis_Tool_Installer_legacy_version_exe
2. Install it

Run the tool

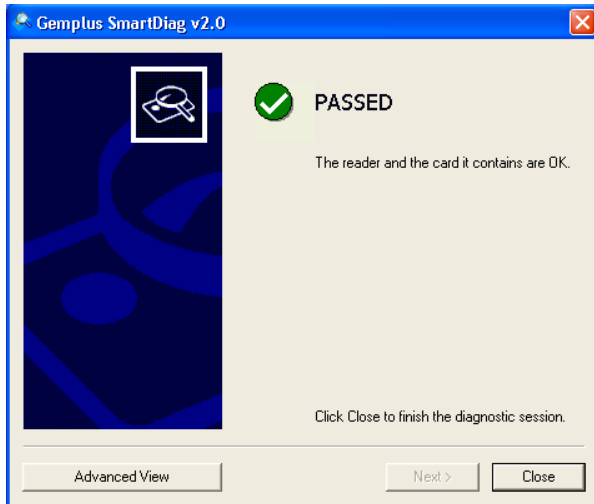
1. Insert a smartcard in the reader
2. Launch the SmartDiag Diagnosis Tool going on "All Programs\Gemplus\SmartDiag".



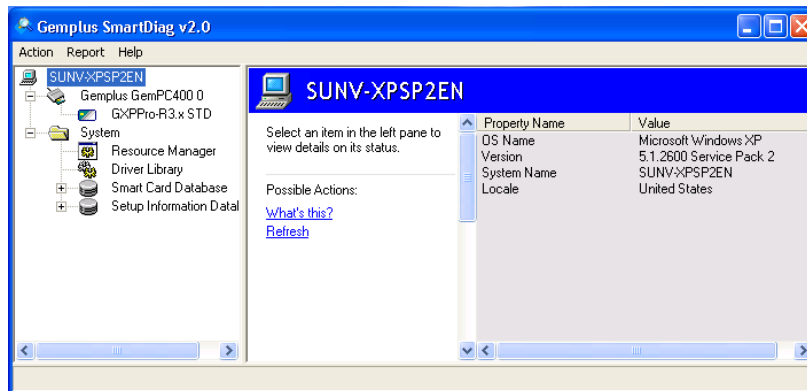
3. Click on "Start" button.



4. Click on the "Advanced View" button of the following window.

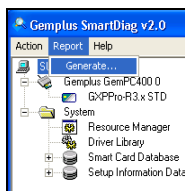


5. Once you have chosen "Advanced View", you should see the following window:



Generate the Smartdiag report

On the menu bar, click on "Report" item and choose "Generate...".



Save the SmartDiag report on your preferred folder.