

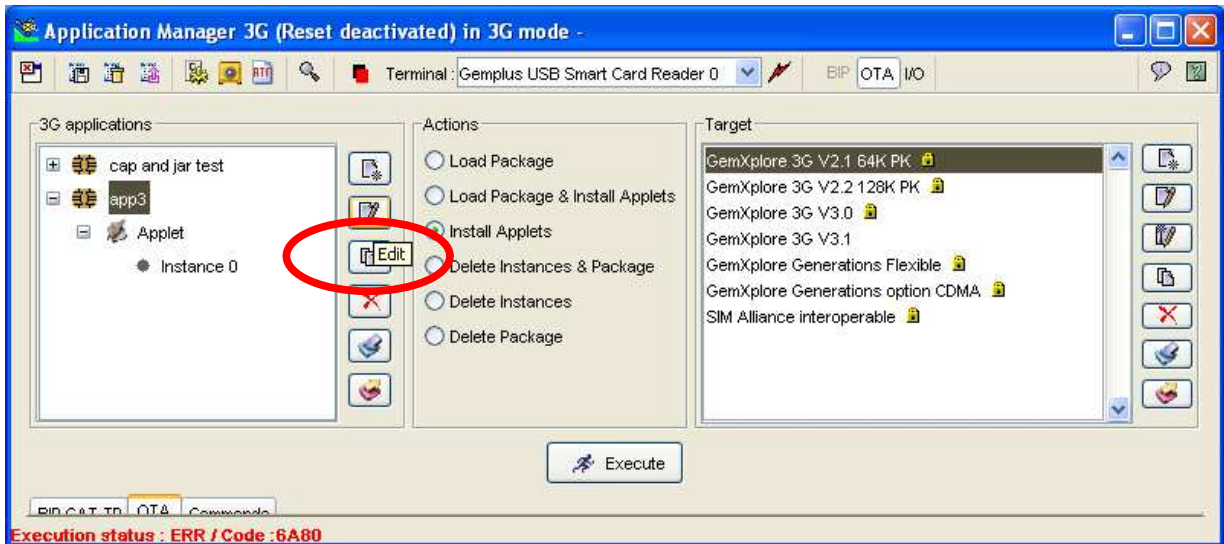


APPLICATION MANAGER 2G/3G

How to define the menu parameters for an applet installation?

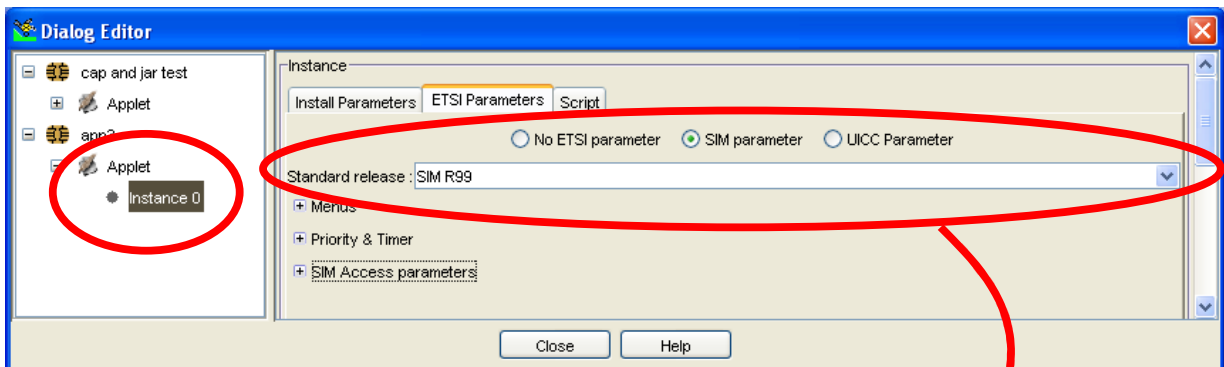
Note that this HowTo covers only one aspect of the applet installation. Refer to the User Guide or tutorials for more information about the applet installation using Application Manager 3G.

1. Use edit to open "Dialog Editor".

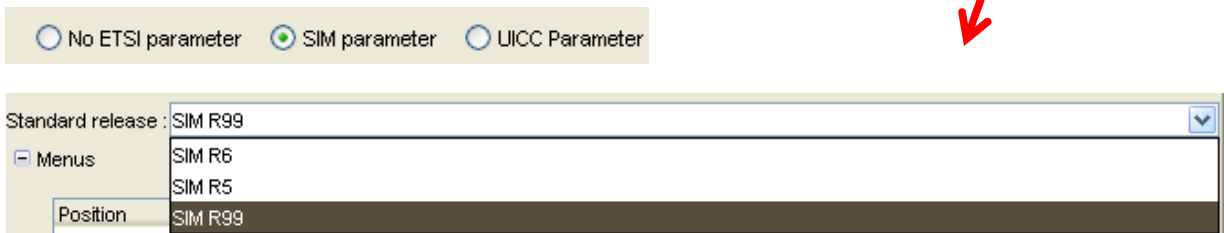


Note: Please be sure to choose correct card type in the "Target" panel.

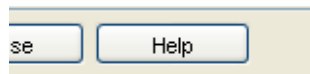
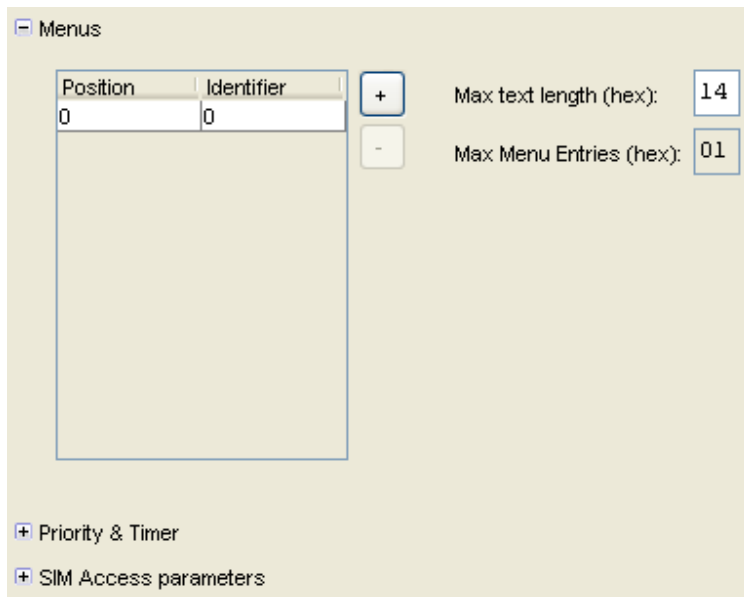
2. Use Left panel to select correct instance of correct applet.

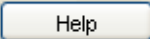


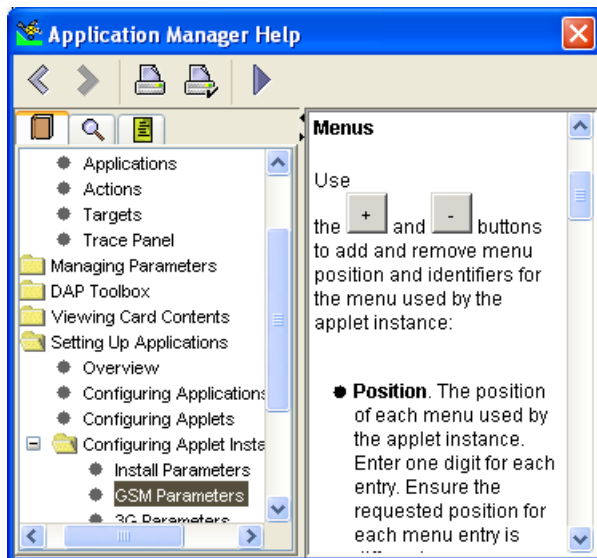
3. Choose SIM parameter option and correct release.



4. Open "Menus"



Note: Please use  and go for "GSM Parameters" for more info on the menu definition.



5. You can then close the window. The menu parameters are ready before installing the applet.

