



3DSYSTEMS™

## 3D SYSTEMS- Procedures

PROJET® 3500 PRINTERS

“Procedure: VisiJet® M3 Black Material Hygiene”

Revision date: August 29, 2014



3DSYSTEMS™

# Objectives

*After completing this procedure you will be able to:*

- Perform VisiJet® M3 Black/printhead hygiene maintenance procedure.



## VisiJet® M3 Black Printhead Hygiene

- It **strongly** recommended to run this printhead hygiene procedure after EVERY build to ensure optimal, long life performance of the printhead when running with VisiJet® M3 Black.



# VisiJet® M3 Black Printhead Hygiene

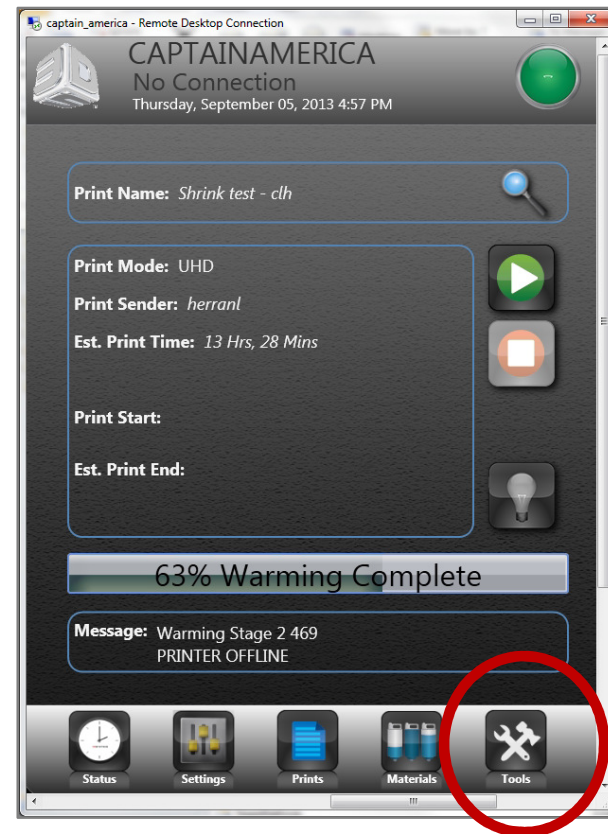
## Criteria for Printhead Hygiene:

Perform this procedure after  
EVERY BUILD.

## PROCEDURE:

### STEP 1:

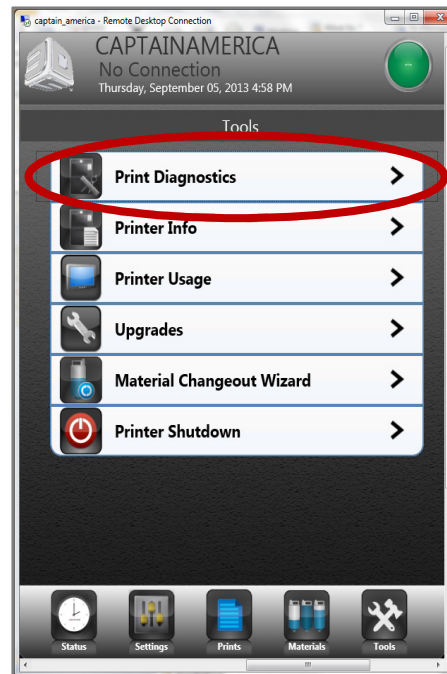
From the ProJet® Operator Panel:  
Select the **Tools** icon.



# VisiJet® M3 Black Printhead Hygiene

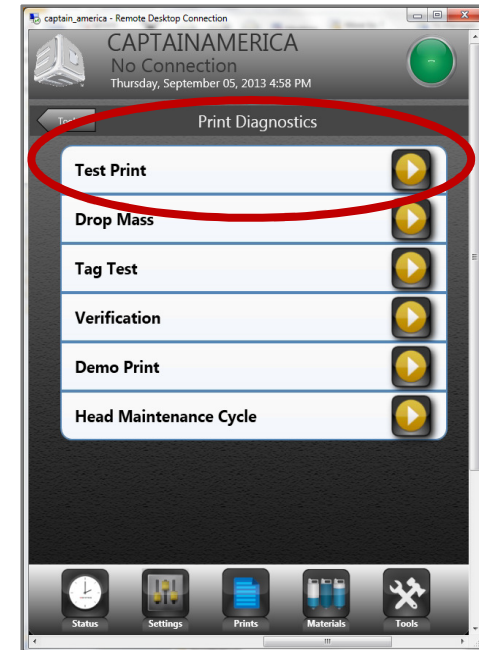
## STEP 2:

In the next screen select **Print Diagnostics**.



## STEP 3:

In the next screen select **Test Print**.



## VisiJet® M3 Black Printhead Hygiene

- ❑ The printer will start a print that will be approximately 10 minutes in duration. The build will lay down 1 layer of part and support material.

### STEP 4:

Inspect the test build for consistency

- A good test build should be solid across the entire line for both part and support materials.
- Pay particular attention to the part material line to determine if additional hygiene should be performed.



**Example of a Good Test Print**

- Test print should be free of spaces or gaps.

# VisiJet® M3 Black Printhead Hygiene

## STEP 5:

If the test print does not look good as described (See photo):

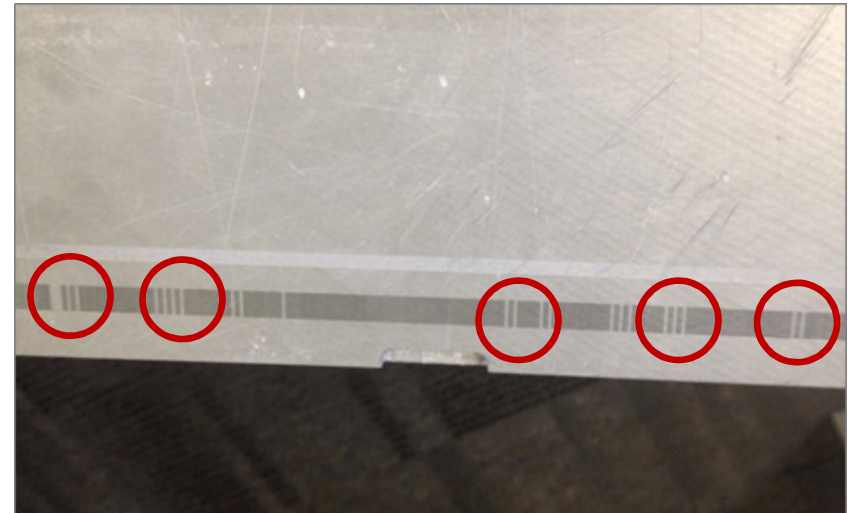
- Repeat Steps 1-3 to perform another Test Print.

## STEP 6:

If after three (3) Test Print attempts, the build does not pass:

- Contact your 3D Systems Service Personnel who will provide you with advanced troubleshooting procedures.

The **Test Print** will quickly clear out any potentially clogged jets with minimal material usage. Please use this procedure when printing with VisiJet® M3 Black **AFTER** each build.



**Example of a Bad Test Print**

- Notice the blank areas. This represents jets that are partially or fully clogged or missing.