

3DSYSTEMS®

Print3D

Help & Quick start guide
for Windows



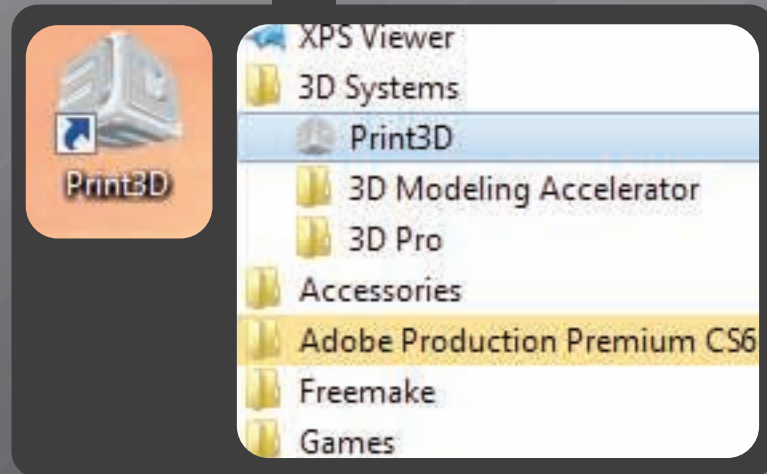
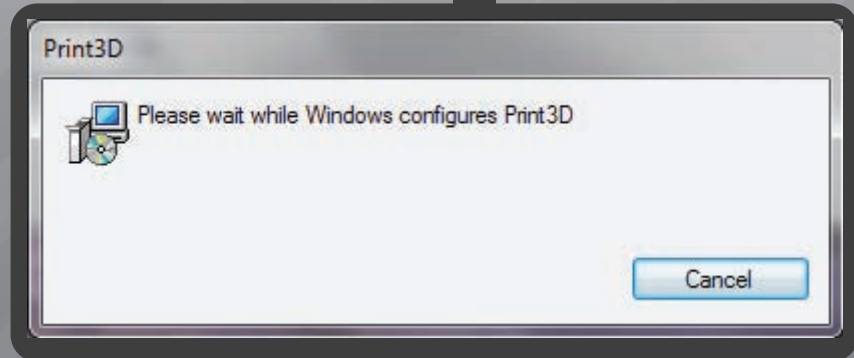
Print3D Installation

Help & Quick start guide

Extract the installer from the zip file.

Double click "GUIInstaller-5.0.3461.0.msi". Print3D will install into C:\Program Files (x86)\3D Systems\Print3D

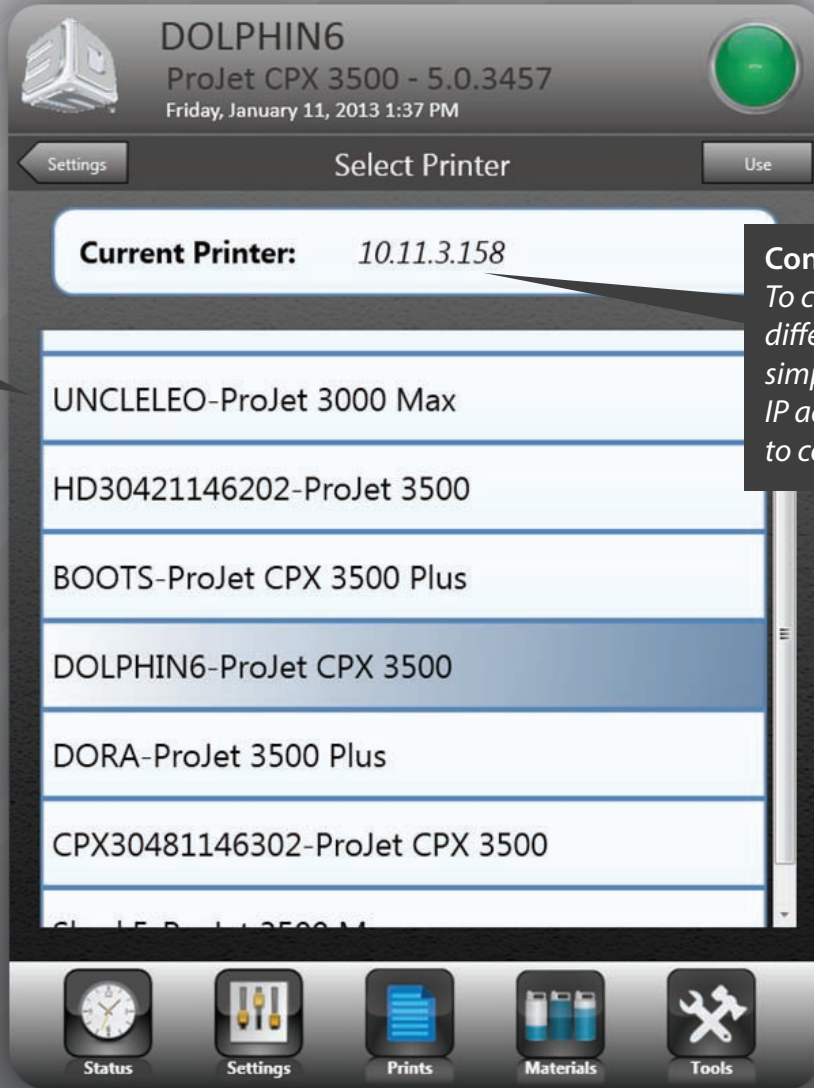
Once Print3D is finished installing, there will be a shortcut on your desktop and start menu.





Print3D Printer Connection

Help & Quick start guide




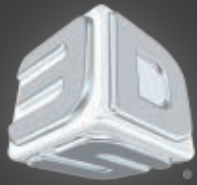
Use Button
Press once printer is selected

Connect with IP
To connect to a printer on a different subnet address, simply type in the printers IP address. Click "Use" to connect."

Available Printers
To connect, select printer from list then click "Use" to connect.

Note: Only when PC and the Printer are on the same subnet address will printers populate this area.

 **Attention**
First time connecting to a printer will be slow, be patient.



Print3D

Help & Quick start guide

Status screen

Status Indicator

Note: To close Print3D
click the status indicator

DOLPHING
ProJet CPX 3500 - 5.0.3457
Friday, January 11, 2013 1:34 PM

Print Name: *hieberj@us-ws-1048-0185*

Print Mode: HD
Print Sender: *hieberj*
Est. Print Time: 05 Hrs, 34 Mins

Print Start:
Est. Print End:

0% Complete

Message: READY TO PRINT
PRINTER OFFLINE

Status Settings Prints Materials Tools

Selected

Printer name

Preview build

Start loaded build

Abort build

Progress bar

Message center

Light Toggle

The Status Screen

This is the **Status Screen**. From here you can monitor the printer status, start builds, abort builds, and toggle the lamp.

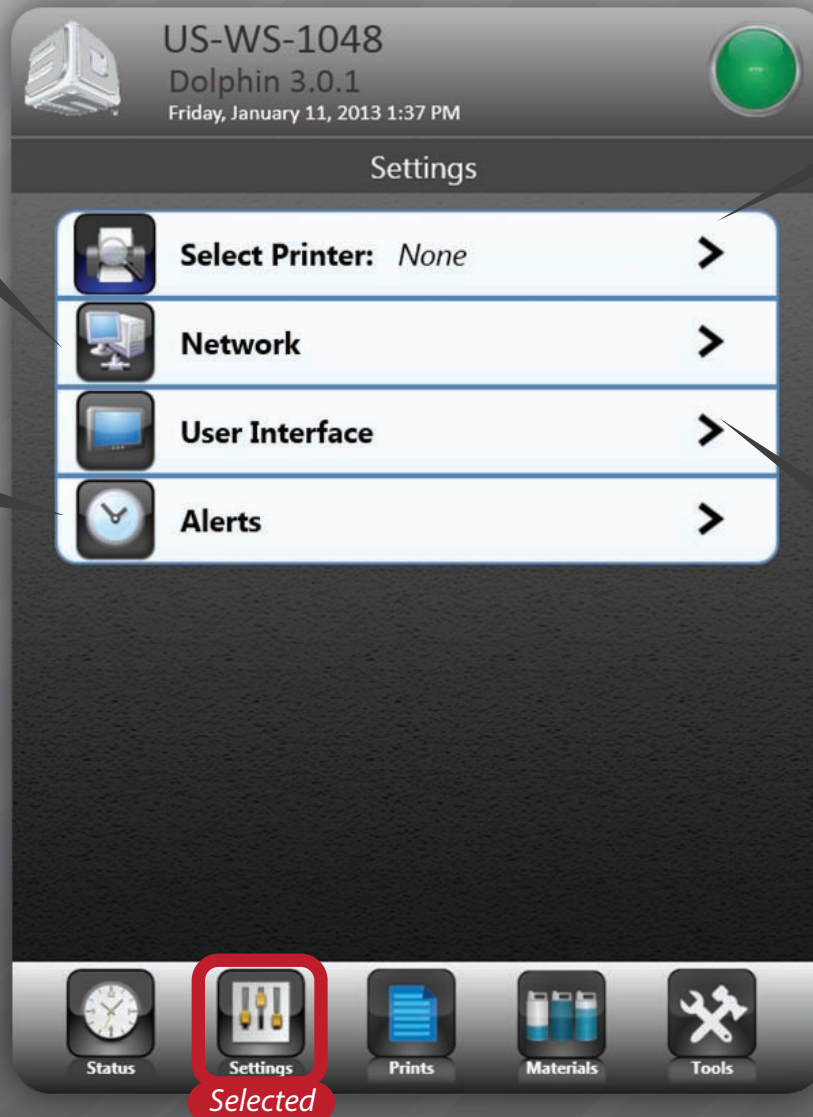




Print3D

Help & Quick start guide

Settings screen



Network

Change the printer name & IP.

Alerts

Email setup.

Printer Connection

Use this option to initially connect to a printer or to change connections to another printer.

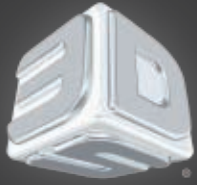
User Interface

Date/Time, font size, Language, and Color scheme.

The Settings Screen

This is the **Settings Screen**. From here you can connect to printers, change the printer name & IP, date/Time, font size, Language, and Color scheme, and email setup.





Print3D

Prints screen

Help & Quick start guide

Edit

Click to edit to change the build order or delete an entry. Click on a job a check will appear. To move up click the up arrow, to copy select the spinning arrows, to delete press the X icon.

DOLPHIN6
ProJet CPX 3500 - 5.0.3457
Friday, January 11, 2013 1:40 PM

Print Queue Edit

- hieberj@us-ws-1048-0185
Print Time Est: 05 Hrs, 34 Mins
- hieberj@us-ws-1048-0193
Print Time Est: 05 Hrs, 34 Mins
- hieberj@us-ws-1048-0194
Print Time Est: 02 Hrs, 11 Mins

Print queue
A list of all queued builds.

Queue History

Status Settings **Prints** Materials Tools

Selected

- hieberj@us-ws-1048-0185
- ✓ hieberj@us-ws-1048-0193
- hieberj@us-ws-1048-0194

Control icons: X, Refresh, Move Up, Copy (+), Delete (-)

History

A list of all past builds.

DROP VOLUME 1 Tai
Print Completed: Wed, 01/09, 9:11 AM

CP DEMO
Print Completed: Wed, 01/09, 6:33 AM

DROP VOLUME 1 Tai
Print Completed: Tue, 01/08, 2:28 PM

hieberj@us-ws-1048-0188
Print Completed: Tue, 01/08, 11:41 AM

CPX DEMO
Print Completed: Tue, 01/08, 12:04 AM

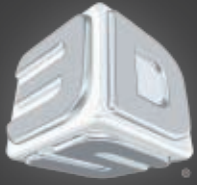
hieberj@us-ws-1048-0182
Print Completed: Mon, 01/07, 10:15 AM

The Prints Screen

Materials



5



Print3D

Materials screen

Help & Quick start guide

DOLPHING
ProJet CPX 3500 - 5.0.3457
Friday, January 11, 2013 1:42 PM

Materials

Support Material	Part Material
Status: ACTIVE Type: S400 Weight: 1.79 kg Batch: 6/3/2012 Expires: 6/2/2017	Status: ACTIVE Type: HiCast Weight: 1.68 kg Batch: 10/14/2012 Expires: 10/14/2014
Support Message: Add cartridge to SUPPORT MDM 1	
Part Message: 2 PART	

Status **Settings** **Prints** **Materials** **Tools**

Selected

Support Material

Indicates fill level. Bottles with X's on them means no bottle installed.

Part Material

Indicates fill level. Bottles with X's on them means no bottle installed.

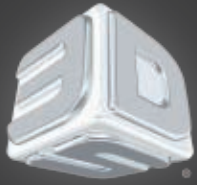
Material Cartridge info

Shows selected support status indicated by blue outline.

Material Cartridge info

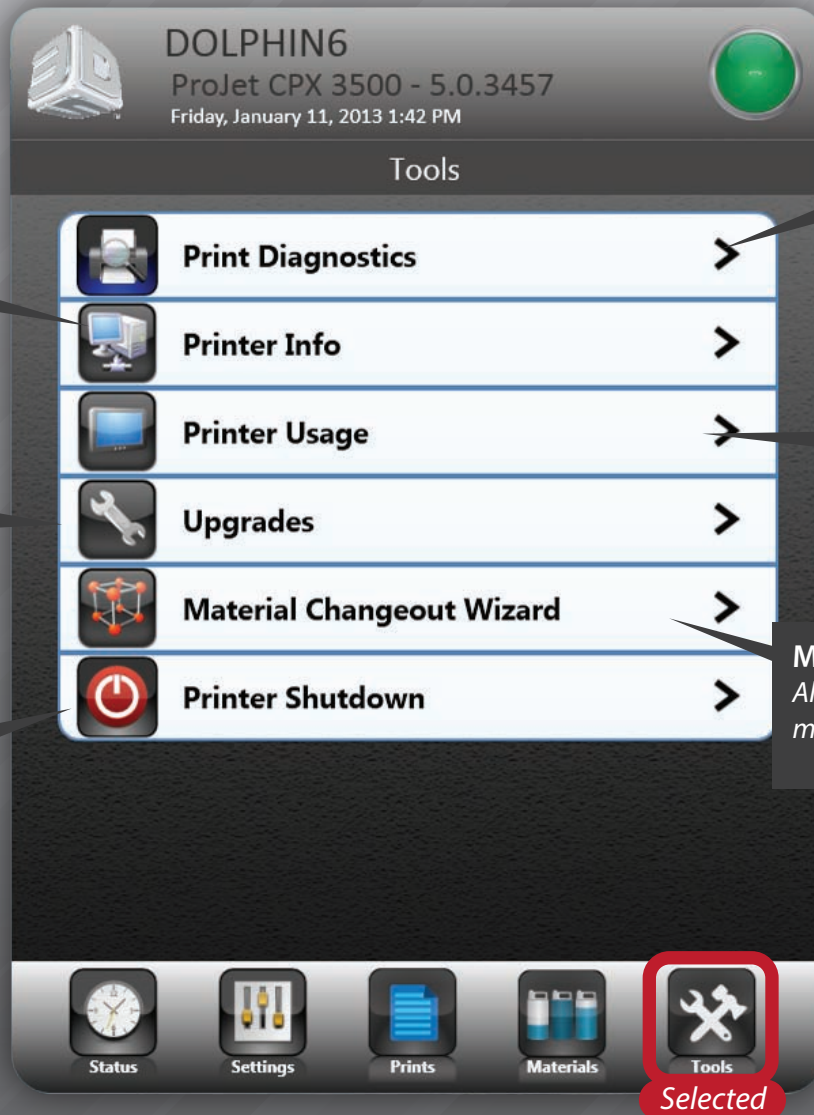
Shows selected part status indicated by blue outline.





Print3D Tools screen

Help & Quick start guide



Printer Info

Software version, Machine type, Mac address, and App version.

Upgrades

Allows user to upgrade to a Plus or Max.

Shutdown Printer

Printer shutdown, Printer reboot, and Software restart.

Print Diagnostics

Preconfigured diagnostic test print files

Printer Usage

Machine hours, Build hours, Lamp hours, Part material, and Support material.

Material Changeover Wizard

Allows user to switch from one material to another.

The Tools Screen

Tools



Create with Confidence



3DSYSTEMS®
www.3DSystems.com