

# Samsung Theme Designer Quick Start Guide

By Junyoung LEE

Published by Samsung Developers

Version 2.0.4 May 2012

## Change history

13 October 2010	Version 1.0.0	Initial document release
26 November 2010	Version 1.0.1	Add notice about using default and showcase icons
28 February 2011	Version 1.0.3	Add notice about defect and reject reasons
02 June 2011	Version 1.0.5	Change Seller site preview image
03 November 2011	Version 2.0.0	Change theme type and add bada 2.x Phone Theme
02 December 2011	Version 2.0.1	Add notice about making manifest
05 January 2012	Version 2.0.2	Add notice about supporting both bada 1.x and 2.x models
23 February 2012	Version 2.0.3	Update changed process of getting manifest file
21 May 2012	Version 2.0.4	Update Samsung Developers shorten URL

# Contents

1. INTRODUCTION .....	4
1.1 LICENSE AND COPYRIGHT .....	4
1.2 NOTICE .....	4
2. PREPARATIONS FOR INSTALLATION .....	5
2.1 START SAMSUNG THEME DESIGNER.....	5
2.1.1 Preparations for Installation .....	5
3. INSTALLATION.....	6
4. START PROGRAM.....	14
5. WINDOW LAYOUT .....	16
6. EXAMPLE OF THEME AUTHORING.....	19
6.1 BADA 2.X PHONE THEME .....	19
6.1.1 Step 1 – Create New Theme .....	19
6.1.2 Step 2 – Set Image or Flash .....	20
6.1.3 Step 3 – Change Style .....	25
6.1.4 Step 4 – bada Application : manifest.xml .....	26
6.1.5 Step 5 – bada Application : Import bada Resource.....	32
6.1.6 Step 6 – Export.....	33
6.2 BADA 1.X PHONE THEME .....	35
6.2.1 Step 1 – Create New Theme .....	35
6.2.2 Step 2 – Change Image .....	36
6.2.3 Step 3 – Select Skin .....	37
6.2.4 Step 4 – bada Application : manifest.xml .....	38
6.2.5 Step 5 – bada Application : Images .....	39
6.2.6 Step 6 – bada Application : Import bada Resources.....	40
6.2.7 Step 7 – Export.....	40
6.3 FEATURE (TOUCH) PHONE THEME.....	41
6.3.1 Step 1 – Create New Theme .....	41
6.3.2 Step 2 – Change Image .....	41
6.3.3 Step 3 – Select Skin .....	41
6.3.4 Step 4 – Export.....	41
6.4 FEATURE (NONTOUCH) PHONE THEME.....	42
6.4.1 Step 1 – Create New Theme .....	42
6.4.2 Step 2 – Change Image .....	42
6.4.3 Step 3 – Edit Mainmenu .....	43
6.4.4 Step 4 – Set Style.....	43
6.4.5 Step 5 – Export.....	43
7. MORE INFORMATION .....	44

## Preface

---

The Samsung Theme Designer Quick Start Guide provides background information and examples for Samsung Theme development.

## License Information

---

Copyright © 2009-2012 Samsung Electronics Co., Ltd.

All rights reserved.

This document contains confidential and proprietary information ("Confidential Information") of Samsung Electronics Co. Ltd. ("Samsung"). The user of this document agrees not to disclose, disseminate or copy such Confidential Information and shall use the document only in accordance with the terms of the license agreement the user entered into with Samsung.

### Disclaimer

SAMSUNG SPECIFICALLY DISCLAIMS ANY WARRANTIES FOR THE CONTENT OR SERVICES PROVIDED HEREIN, INCLUDING, BUT NOT LIMITED TO, THE IMPLIED WARRANTIES OF MERCHANTABILITY AND FITNESS FOR A PARTICULAR PURPOSE. SAMSUNG HAS NO OBLIGATION TO PROVIDE MAINTENANCE, SUPPORT, UPDATES, ENHANCEMENTS, OR MODIFICATIONS OF THIS SOFTWARE. SAMSUNG DOES NOT GUARANTEE THE ACCURACY, VALIDITY, TIMELINESS, LEGALITY, OR COMPLETENESS OF ANY CONTENT OR SERVICES MADE AVAILABLE THROUGH THIS SOFTWARE. IN NO EVENT SHALL SAMSUNG BE LIABLE TO ANY PARTY, WHETHER IN CONTRACT OR TORT, FOR DIRECT, INDIRECT, SPECIAL, INCIDENTAL, OR CONSEQUENTIAL DAMAGES, INCLUDING LOST PROFITS, ARISING OUT OF, OR IN CONNECTION WITH, THE USE OF THIS SOFTWARE AND ITS DOCUMENTATION, EVEN IF SAMSUNG IS ADVISED OF THE POSSIBILITY OF SUCH DAMAGES.

Copyright © 2009-2012 Samsung Electronics Co., Ltd. All rights reserved.

## 1. Introduction

---

The Samsung Theme Designer is an authoring tool, allowing designers and developers to create Themed content for Samsung mobile phones.

The Samsung Theme Designer supports native Samsung Mobile phones. For Android Mobile phones, please visit the corresponding platform menus on the Samsung Developers site (<http://developer.samsung.com>).

The Samsung Theme Designer includes model specific pre-set information, image/animation components, a preview function and sample theme templates.

The Samsung Theme designer provides designers and developers with the tools required to create state of the art theme contents.

The Samsung Theme Designer supports Samsung GUI's as listed below.

- bada 2.x Phone Theme
- bada 1.x Phone Theme
- Feature (Touch) Phone Theme
- Feature (NonTouch) Phone Theme

### 1.1 License and Copyright

If you want to register themes created by the Samsung Theme Designer for Samsung Apps, please consider License and copyright issues before registration.

Samsung expressly excludes liability for any loss, damage or legal dispute arising from the use of unlicensed images, graphics and photos by any person in violation of any third party rights. Samsung strongly recommends that you use self-created graphical resources or royalty free images to make thematic content.

### 1.2 Notice

(1) If you want to register your own theme for Samsung Apps, you have to change the idle background image and all the Mainmenu icons of a default theme.

(2) Please note that you cannot use other tools or methods for your theme arbitrarily. If you make your themes without using the Samsung Theme Designer, your theme would be rejected by the Samsung Apps Theme Certification Team.

(3) Please note that you cannot use the images/icons of a default or showcase theme for your theme arbitrarily. If you use these images or icons (or a part of icons) your theme will be rejected by the Samsung Apps Theme Certification Team.

(4) And the theme preview image shown on the phone should be selected as Mainmenu image. You are not allowed to change the image arbitrarily. If you change the image your theme also would be rejected by the Samsung Apps Theme Certification Team.

## 2. Preparations for Installation

### 2.1 Start Samsung Theme Designer

#### 2.1.1 Preparations for Installation

To install the Samsung Theme Designer, download an installer file at the Samsung Developers Theme service website (<http://developer.samsung.com/themes/resources>).

If for some reason you need to re-install the Samsung Theme Designer program, it is strongly recommended you uninstall the previous version, before re-installing.

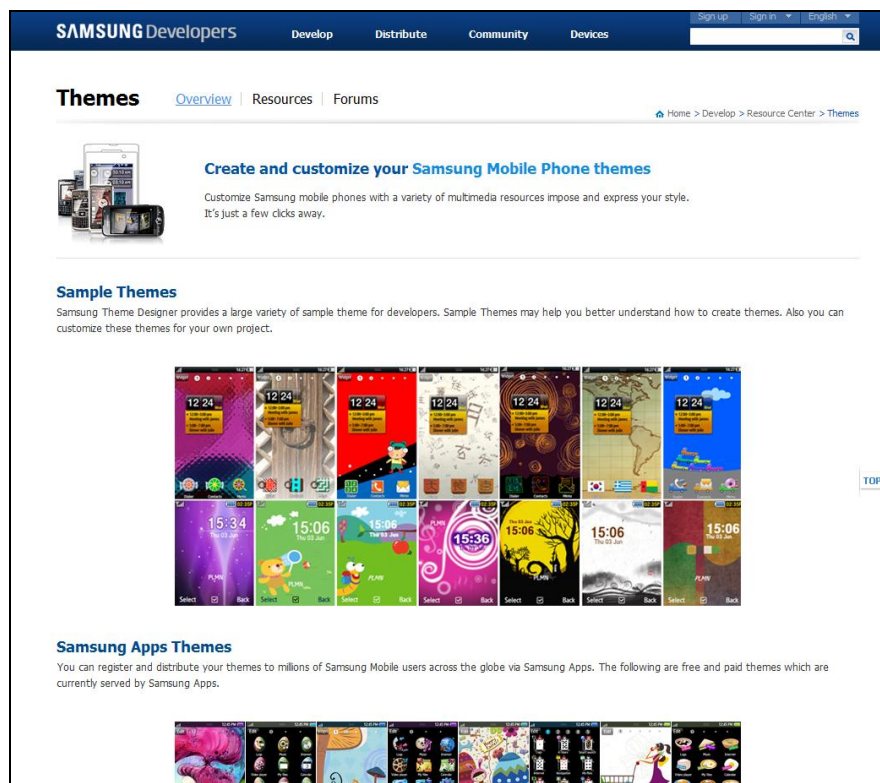


FIGURE 2-1 Samsung Developers Theme service website

A PC with the following minimum hardware configuration is required for the Samsung Theme Designer:

- Microsoft Windows XP / Vista / 7
- 300 MB hard disk
- 128 MB system RAM
- 300 MHz CPU

### 3. Installation

After downloading the latest version of the Samsung Theme Designer, execute the downloaded file, and then follow the steps as listed below.

- Step 1. FIGURE 3-1 shows the 1st step required to install the program. Click Next to continue.



FIGURE 3-1 Install – Step 1

- Step 2. FIGURE 3-2 shows the 2nd step required during installation. Please ensure you have read the license agreement and then check your choice, then click Next to continue.

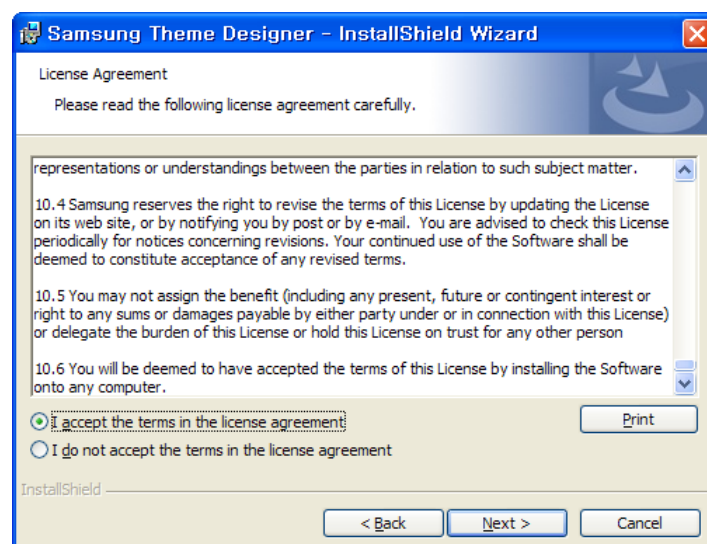


FIGURE 3-2 Install – Step 2

- Step 3. FIGURE 3-3 shows the 3rd step required during installation. Choose your User Name and Organization Name, and then click Next.

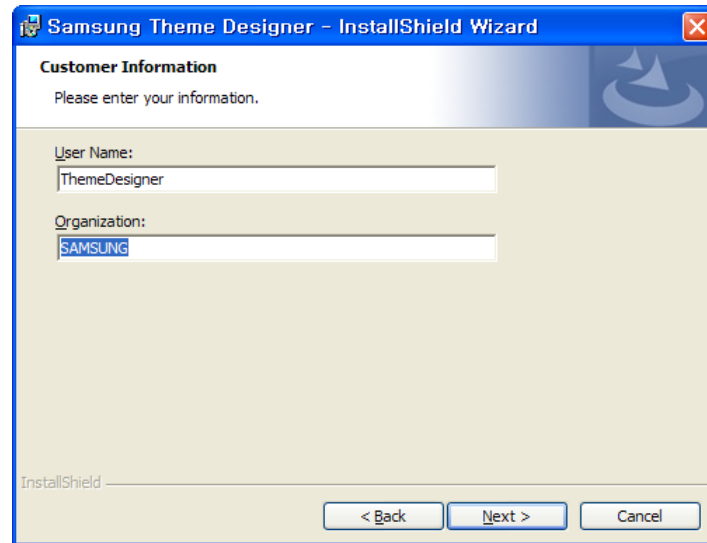


FIGURE 3-3 Install – Step 3

- Step 4. FIGURE 3-4 shows the 4th step during installation. You can change the installation destination if required, and then click Next.

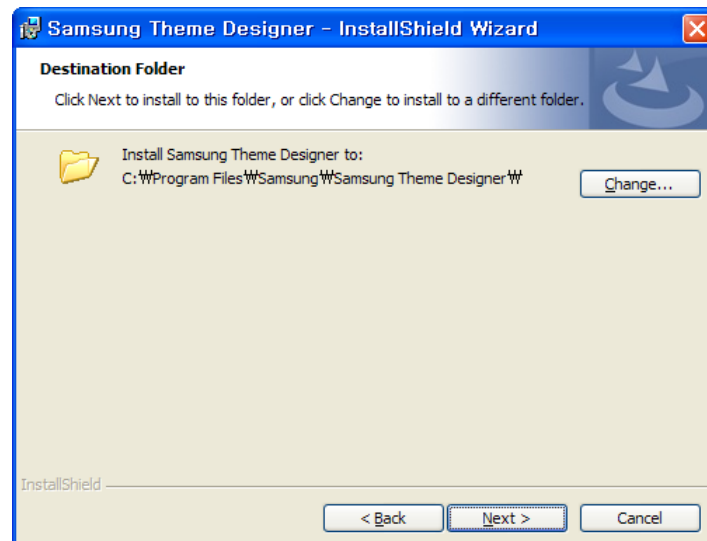


FIGURE 3-4 Install – Step 4



- Step 5. Samsung Theme Designer offers three setup options (FIGURE 3-5). Choose the setup type that best suits your needs, and then click Next.

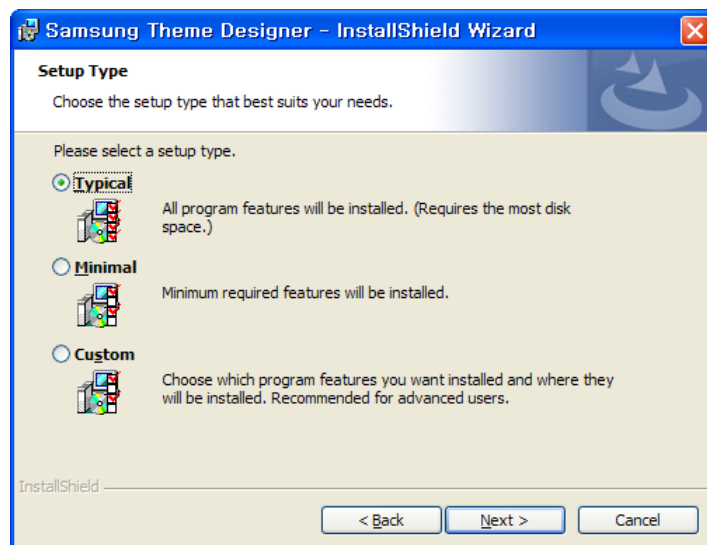
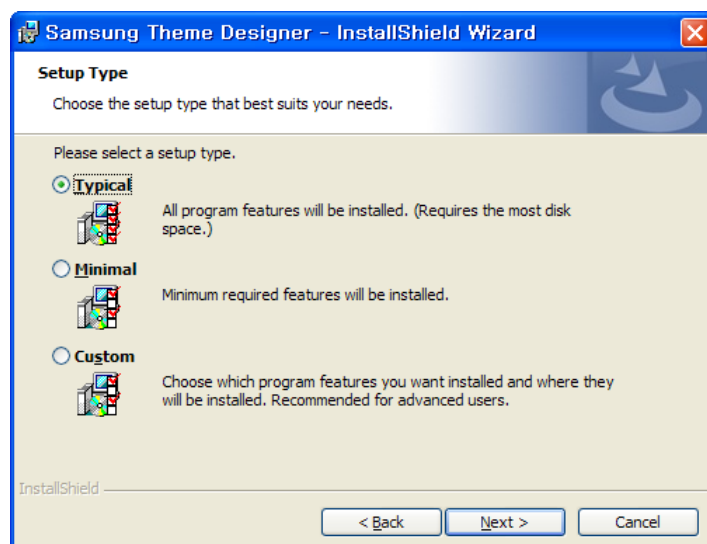


FIGURE 3-5 Install – Step 5

FIGURE 3-6 shows the options and details of typical type.

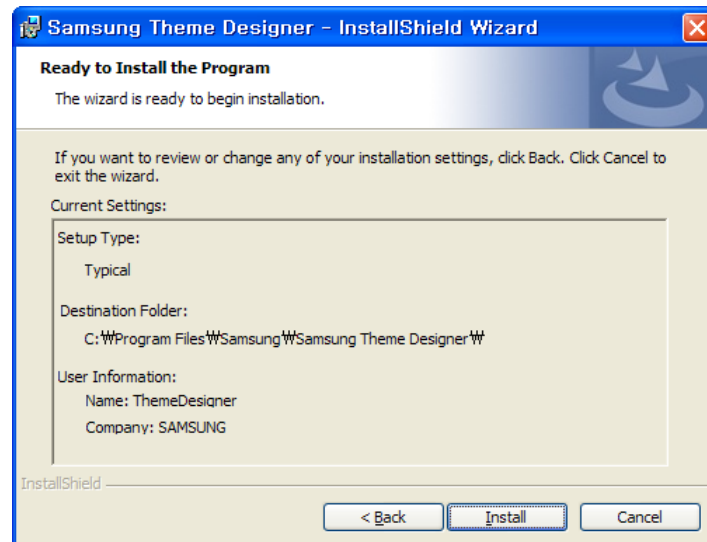
FIGURE 3-6 shows the setup options and the details of each of them.

- Option 1) Typical : Default installation include showcases and tutorial. (Recommended)



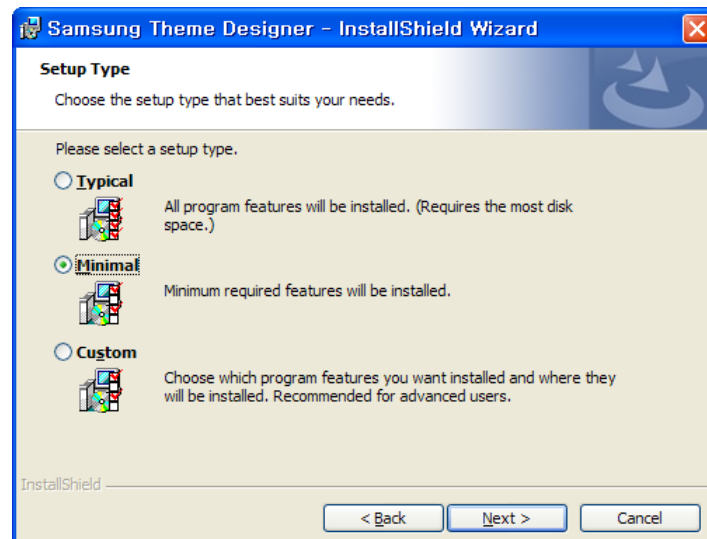
[Step 1] Choose Typical installation to install with default type.



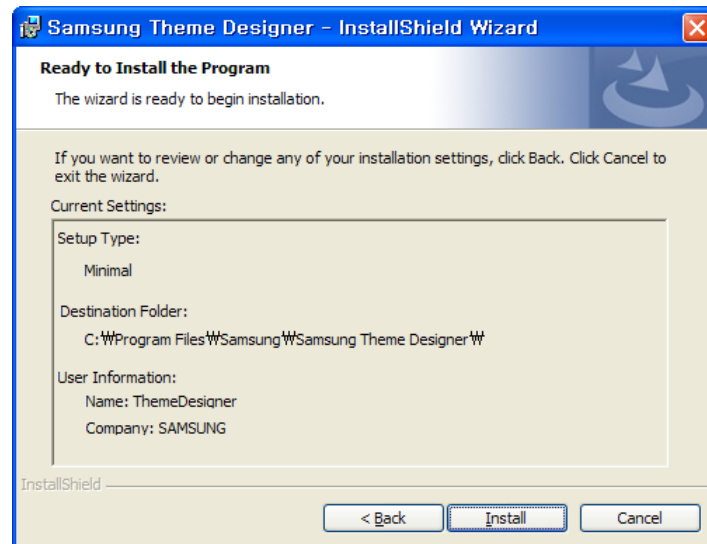


[Step 2] Shows your current installation settings. If correct, click Install to continue.

- Option 2) Minimal : Minimum installation without showcases and tutorial.

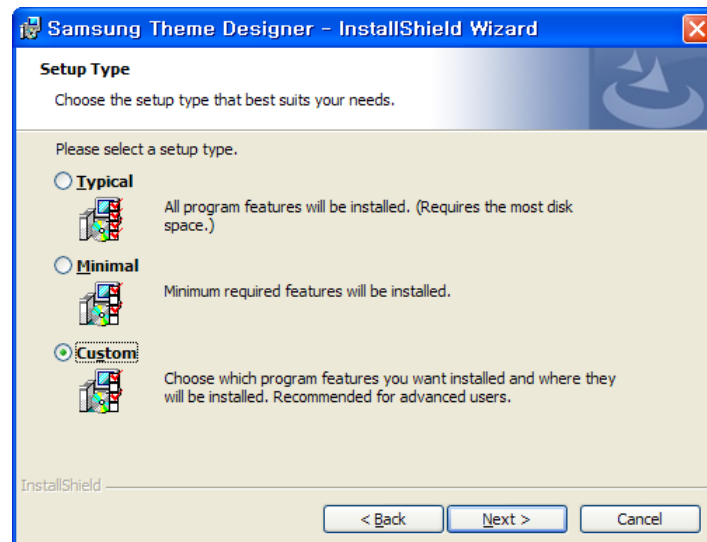


[Step 1] Choose Minimal to install with minimum features.

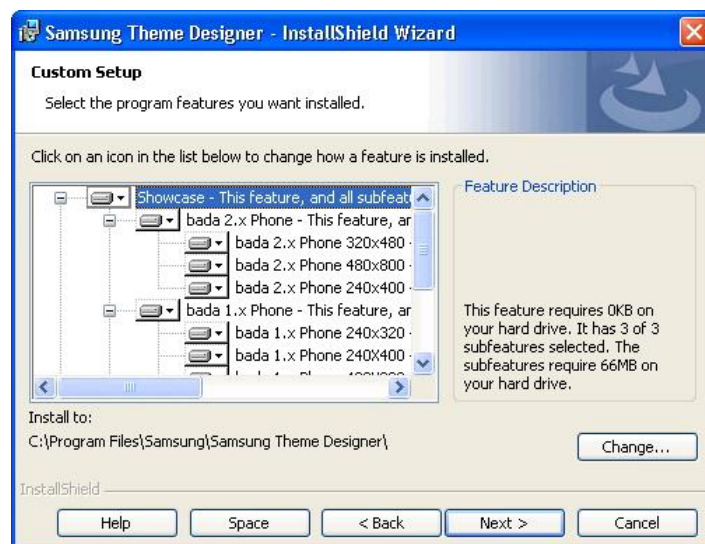


[Step 2] Shows your current installation settings. If correct, click Install to continue.

- Option 3) Custom : You can choose any modules that you want to install.



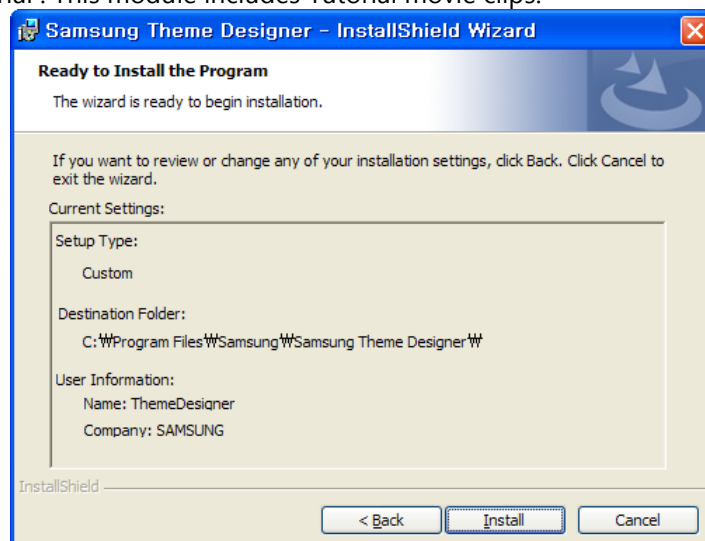
[Step 1] Chose Custom to select the modules you wish to install.  
(Recommended for advanced users)



[Step 2] Choose each module to install on your computer, or click back to change your installation type.

You can save storage space by not installing the ShowCase and Tutorial modules.

- ShowCase : This module includes bada 2.x, bada 1.x, Feature (Touch), and Feature (NonTouch) Phone Theme Sample Showcases.
- Tutorial : This module includes Tutorial movie clips.



[Step 3] Shows your current installation settings. If correct, click Install to continue.

- Step 6. FIGURE 3-7 shows the installation files being copied. This may take several minutes. If you are using an anti-virus program, please turn it off before installing.

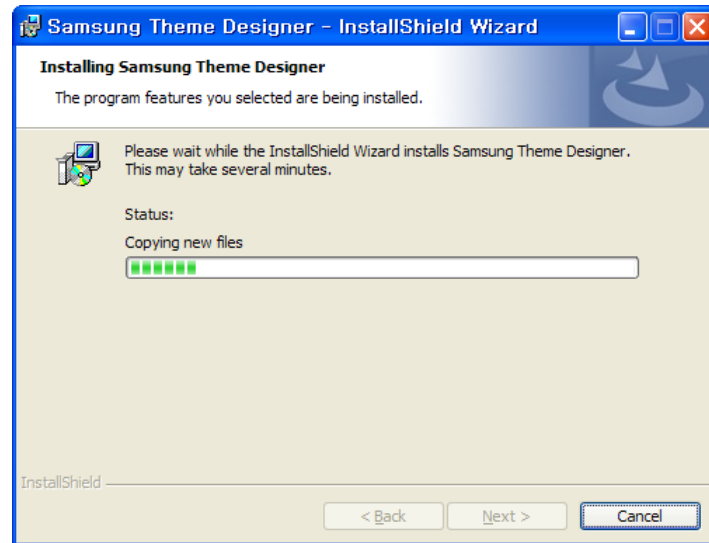


FIGURE 3-7 Install – Step 6

- Step 7. FIGURE 3-8 shows the final requirement of installation – to complete the process simply click the Finish button.

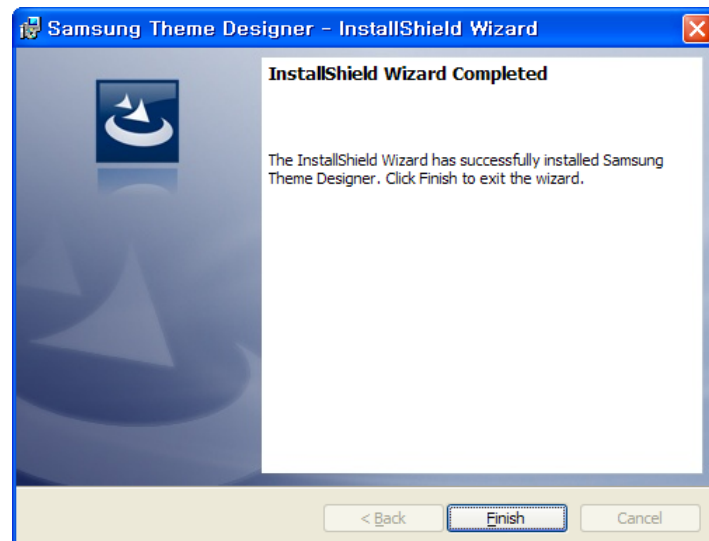


FIGURE 3-8 Install – Final

- Step 8. FIGURE 3-9 shows the system re-start message box. You must reboot your computer for the changes to take effect.

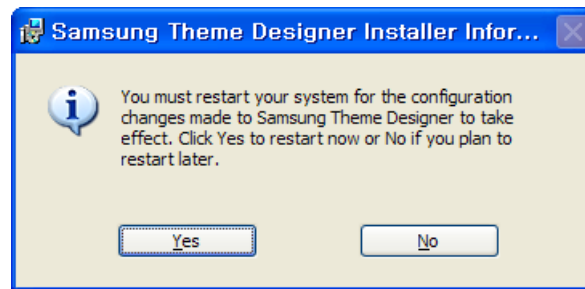


FIGURE 3-9 Install – Reboot

## 4. Start Program

FIGURE 4-1 shows you creating a new theme from the intro dialog.

- Create New Theme

To create a new theme simply select "Create New Theme" from the intro dialog. Then click a device model name and a showcase from the list.



FIGURE 4-1 Intro Dialog

If you want to hide the intro dialog next time, start the Samsung Theme Designer and check the "Don't show again" checkbox on the right hand side of the intro dialog

## ■ Create from Showcase theme

After choosing "Create New Theme" from the intro dialog, you will see a dialog box as below. Select a device model name first from the list then select a showcase for your theme. Then you can customize the selected showcase theme for your own project. FIGURE 4-2 and 4-3 show you the dialog visible when creating a showcase theme.

### ● bada 2.x / bada 1.x Phone Theme

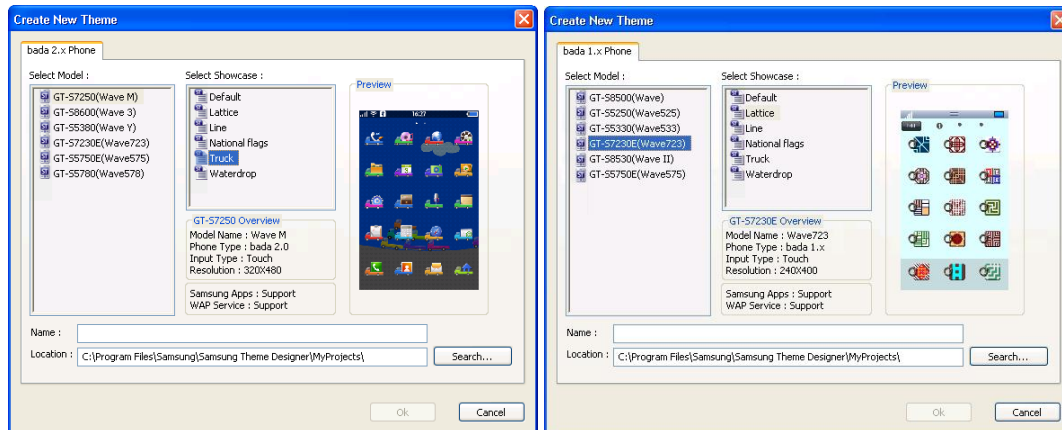


FIGURE 4-2 Create New – bada 2.x / bada 1.x Phone Theme

### ● Feature (Touch) / Feature (NonTouch) Phone Theme

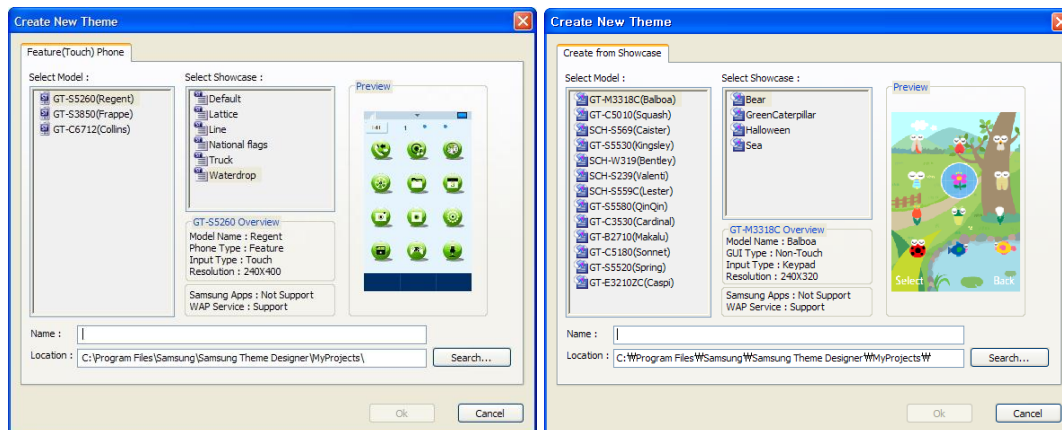


FIGURE 4-3 Create New – Feature (Touch) / Feature (NonTouch) Phone Theme

**\*Notice :** As shown Figure 4-2, some models are included both in bada 1.x and bada 2.x. Please remember that if you select bada 1.x model, bada 1.x theme will be created for bada 1.x phone. We recommend that you create bada 2.x theme because we'll terminate the technical support for bada 1.x themes in the near future.





- **Feature (NonTouch) Phone Theme**

In Feature (NonTouch) Phone Theme type, the Designer tool consists of Working, Tree View, Preview, and Animation Object Windows. See FIGURE 5-2 for details.

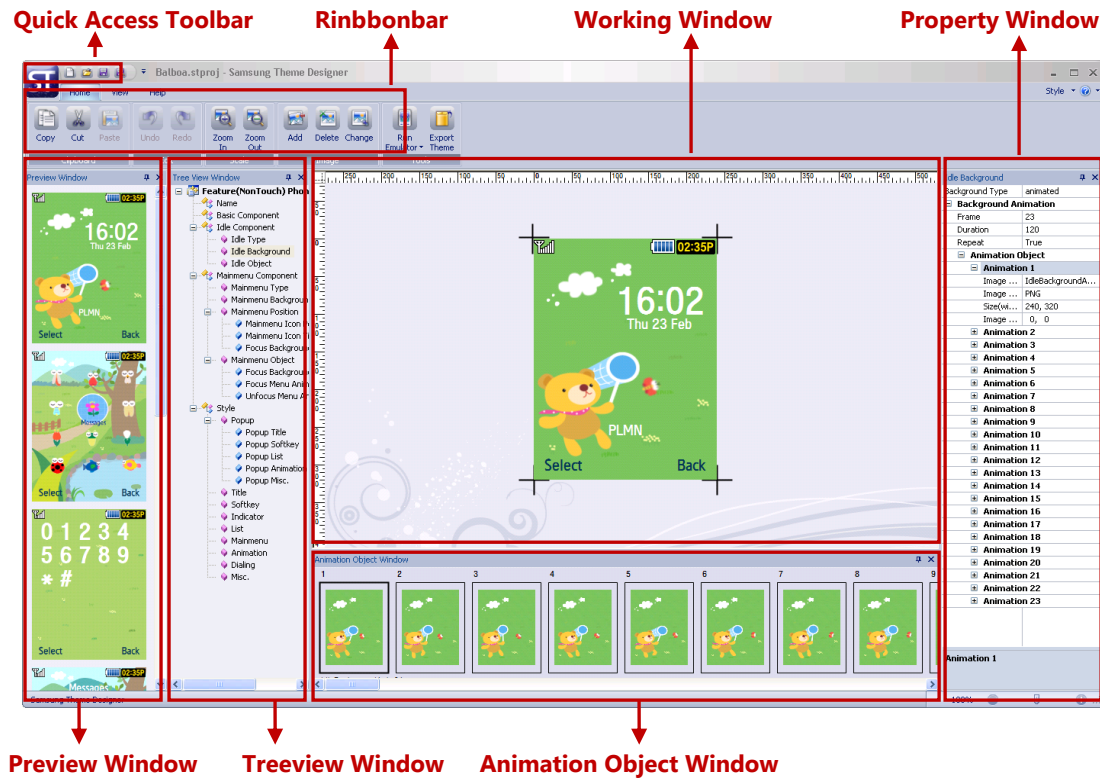


FIGURE 5-2 Window Layout – Feature (NonTouch) Phone Theme

### ■ Tree View Window

Tree View Window shows the group of items needed for organizing a bada 2.x, bada 1.x, Feature (Touch) or Feature (NonTouch) Phone Theme as a tree form.

### ■ Preview Window

You can preview representative screens which are being worked with bada 2.x, bada 1.x, Feature (Touch) or Feature (NonTouch) Phone Theme.

- **bada 2.x / bada 1.x / Feature (Touch) Phone Theme**  
You can preview Idle, Mainmenu, and Submenu screen.
- **Feature (NonTouch) Phone Theme**  
You can preview Idle, Mainmenu, Dial and List screen.

### ■ Property Window

The Property Window shows the select attributes of the current node of the Tree View Window.

### ■ Resource Window (bada 2.x / bada 1.x / Feature (Touch) Phone Theme)

Resource Window shows the editable images for the working screen of the Working Window. You can add, delete or change an image in this window.

### ■ Animation Object Window (Feature (NonTouch) Phone Theme)

Selecting the animation object either in the Working Window or in the Property Window, will display the animation images Animation Object Window. You can drag-and-drop image files into the Animation frame sequence, then edit or delete as appropriate via this method.

### ■ Working Window:

The Working Window shows the screen currently selected for editing. There are differences how to use this window according to the theme type.

- **bada 2.x / bada 1.x / Feature (Touch) Phone Theme**

You can select an item for editing but not move its position. You can change the image by using the Ribbon menu, Context menu of right mouse button or the Property Window.

- **Feature (NonTouch) Phone Theme**

You can select an object, move it by using either mouse or keys, change its image using the Ribbon menu, Context menu (of right mouse button) or Property Window. If the position or the image of the selected object is changed in the Working Window, the Property or Animation Object Window will reflect these changes.

## 6. Example of Theme Authoring

### 6.1 bada 2.x Phone Theme

#### 6.1.1 Step 1 – Create New Theme

On the intro dialog, choose bada 2.x Phone under “Create New Theme”. After that, you will see a dialog box as below. Choose your handset model name first from the list box then select a type for your theme. You can also use a showcase project to create your own theme. FIGURE 6-1 shows you the dialog visible when creating a showcase project.

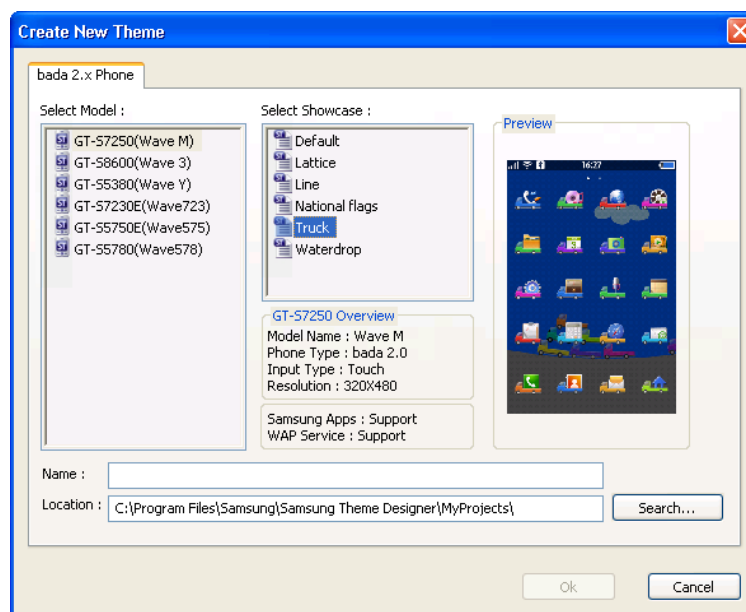


FIGURE 6-1 Create New Dialog – bada 2.x Phone Theme

## 6.1.2 Step 2 – Set Image or Flash

### 6.1.2.1 Idle Wallpaper

You can change the Idle Wallpaper Image. The changeable items will be different according to the theme type as below.

A bada 2.x Phone Theme can support still images and flash files. You can choose the image or flash type for the themed Idle Wallpaper. FIGURE 6-2 shows an Idle Wallpaper image and a flash file example of the bada 2.x Phone Theme.

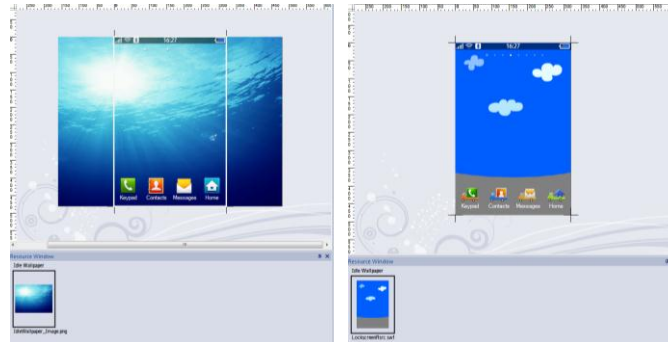


FIGURE 6-2 Set Image or Flash – Idle Wallpaper

If you decided to use a flash file for your theme's Idle Wallpaper, you can use the Flash Settings Dialog as below. Set the flash file by using File... button and you should then be able to see a preview of the file on the left side of the dialog as below. You can optionally set the Sub Directory for the resource folder of your Idle Wallpaper flash file.

**\*Notice :** Please remember that you have to make your flash file with scalable status. The Action script value of your fla or as file should be set as Stage.align = "T" and Stage.scaleMode = "showAll".

The flash image may look different on actual mobile devices. We recommend that you test your themes on the actual device. You can also use our Remote Test Lab(RTL) service.

**\*Notice :** Please remember the name of the resource directory for Idle Wallpaper flash will be fixed as a default name ('IdleRsrc'), so you have to use the name for the resource directory of your flash file.



FIGURE 6-3 Flash Setting Dialog – Idle Wallpaper

### 6.1.2.2 Idle Wallpaper Setting

If you set the Idle Wallpaper as a flash file, you can also set the Idle Wallpaper Setting. The Idle Wallpaper Setting supports only a flash file. FIGURE 6-4 shows an Idle Wallpaper Setting flash file example of the bada 2.x Phone Theme. If you have additional resource files for the Idle Wallpaper Setting, you can set the Resource Directory.

**\*Notice :** Please remember that you have to make your flash file with scalable status. Action script value of your fla or as file should be set as `Stage.align = "T"` and `Stage.scaleMode = "showAll"`.

**\*Notice :** Please remember the name of the resource directory for Idle Wallpaper Setting flash will be fixed as a default name ('IdleSettingRsrc'), so you have to use the name for the resource directory of your flash file.

**\*Notice :** Please remember the size limit of the flash file as listed below.

- bada 2.x Phone Theme (240x400) : 240(w) x 307(h)
- bada 2.x Phone Theme (320x480) : 320(w) x 366(h)
- bada 2.x Phone Theme (480x800) : 480(w) x 614(h)

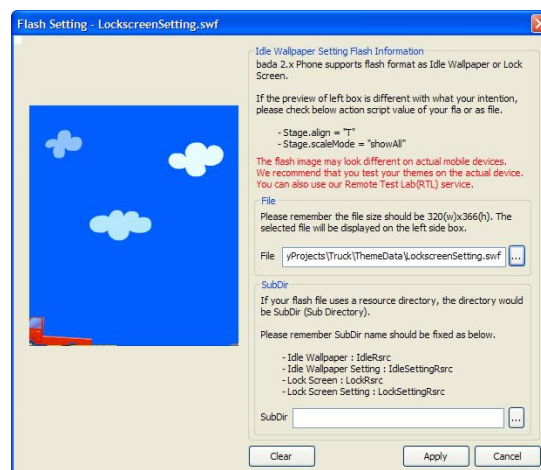


FIGURE 6-4 Flash Setting Dialog – Idle Wallpaper Setting



### 6.1.2.3 Lock Screen

bada 2.x Phone Theme supports setting up a Lock Screen either by a still image or a flash file. FIGURE 6-5 shows a Lock Screen image and a flash file example of the bada 2.x Phone Theme. If you choose flash type for a Lock Screen, an image file of the Lock Screen will be used as a Lock Wallpaper.

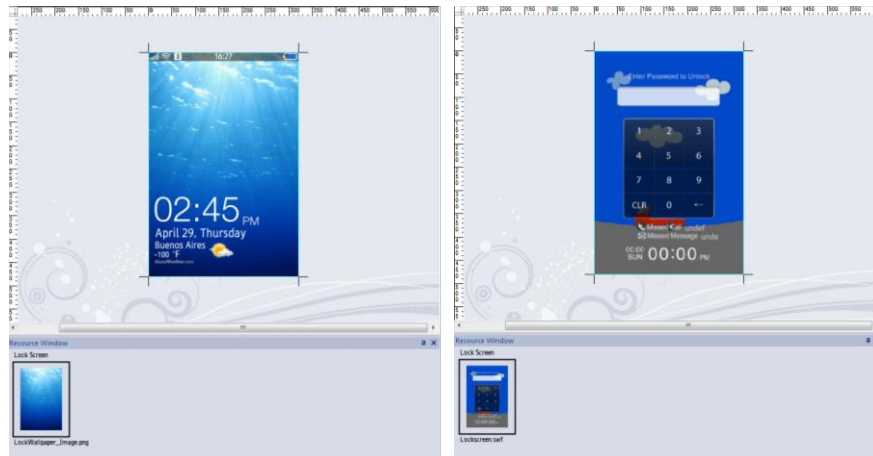


FIGURE 6-5 Set Image or Flash – Lock Screen

If you decided to use a flash file for the Lock Screen, you can use the Flash Setting Dialog as below. Set the flash file by using File... button and then you can see the preview of the file on the left side of the dialog as below. You can optionally set the Sub Directory for the resource folder of your Idle Wallpaper flash file.

**\*Notice :** Please remember that you have to make your flash file with scalable status. Action script value of your fla or as file should be set as `Stage.align = "T"` and `Stage.scaleMode = "showAll"`.

**\*Notice :** Please remember the name of the resource directory for Idle Lock Screen flash will be fixed as a default name ('LockRsrc'), so you have to use the name for the resource directory of your flash file.

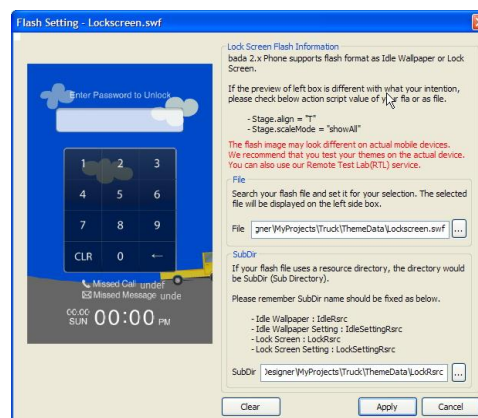


FIGURE 6-6 Flash Setting Dialog – Lock Screen



#### 6.1.2.4 Lock Screen Setting

If you set the Lock Screen as a flash file, you can optionally set the Lock Screen Setting too. The Lock Screen Setting supports only a flash file. FIGURE 6-7 shows a Lock Screen Setting flash file example of the bada 2.x Phone Theme. If you have additional resource files for the Lock Screen Setting, you can set the Resource Directory.

**\*Notice :** Please remember that you have to make your flash file with scalable status. Action script value of your fla or as file should be set as `Stage.align = "T"` and `Stage.scaleMode = "showAll"`.

**\*Notice :** Please remember the name of the resource directory for Idle Wallpaper Setting flash will be fixed as a default name ('LockSettingRsrc'), so you have to use the name for the resource directory of your flash file.

**\*Notice :** Please remember the size limit of the flash file as listed below.

- bada 2.x Phone Theme (240x400) : 240(w) x 307(h)
- bada 2.x Phone Theme (320x480) : 320(w) x 366(h)
- bada 2.x Phone Theme (480x800) : 480(w) x 614(h)

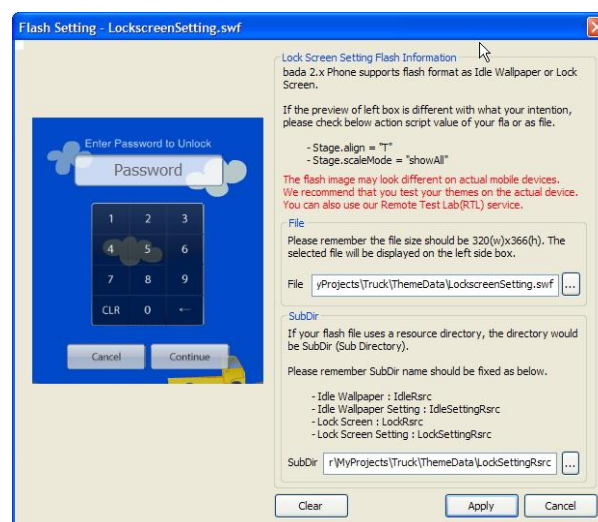


FIGURE 6-7 Flash Setting Dialog – Lock Screen Setting

#### 6.1.2.5 Mainmenu Icons

- You can customise your Mainmenu icons. The Mainmenu themed icon size will depend on the target model. It is recommended that you follow the size of the default Mainmenu icon. Supported image format is 'PNG'. Please refer to the limitation of each model as listed below. FIGURE 6-8 shows icon information from the Property Window after setting a Mainmenu Icon on the bada 2.x Phone Theme.
  - bada 2.x Phone Theme (480x800) : 80(w) x 80(w) with 1 transparent boundary area
  - bada 2.x Phone Theme (320x480) : 50(w) x 50(w) with 1 transparent boundary area
  - bada 2.x Phone Theme (240x400) : 42(w) x 42(w) with 1 transparent boundary area

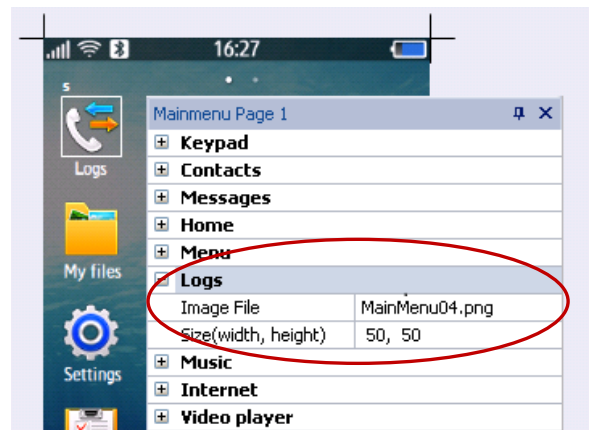


FIGURE 6-8 Set Image – Mainmenu Icon

### 6.1.3 Step 3 – Change Style

On the Tree view window, select “Submenu”. You can change the value of the selected attribute in the Property Window.

- **Header & Footer Pressed BG Color**  
This shows the color and opacity of the pressed background color of all components (button/tab/segment) on the Header & Footer. You can change the color by using the Property Window as below.

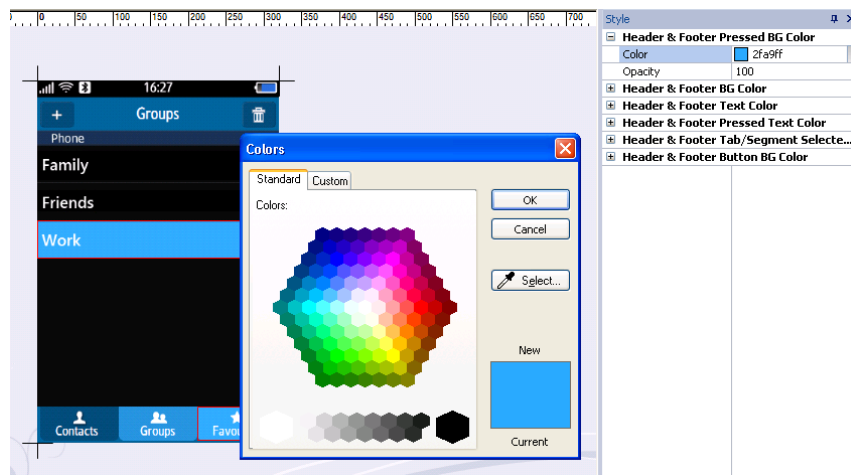


FIGURE 6-9 Change Style – Header & Footer Pressed BG Color

- **Header & Footer BG Color**  
This shows the color and opacity of the background color of the Header & Footer. You can change the color by using the Property Window.
- **Header & Footer Text Color**  
This shows the color and opacity of the text color of all components (button/tab/segment) on the Header & Footer. You can change the color by using the Property Window.
- **Header & Footer Pressed Text Color**  
This shows the color and opacity of the pressed text color of all components (button/tab/segment) on the Header & Footer. You can change the color by using the Property Window.
- **Header & Footer Tab/Segment Selected Color**  
This shows the color and opacity of the selected background of some components (tab/segment) on the Header & Footer. You can change the color by using the Property Window.
- **Header & Footer Button BG Color**  
This shows the color and opacity of the background color of all components (button/tab/segment) on the Header & Footer. You can change the color by using the Property Window.

## 6.1.4 Step 4 – bada Application : manifest.xml

Steps 4 and 5 are only for users making a Samsung bada application. You can make a bada application from your theme by using the Samsung Theme Designer. Simply add a manifest file and two image files before exporting your theme for sale or as a free download on Samsung Apps.

Manifest.xml file is a kind of application profile for your bada application. A Manifest.xml file contains some very important information about the application and is made through the bada Developers website (<http://developer.bada.com/>).

Please follow the steps below to make a manifest.xml file for your bada theme application.

■ Step 1. You have to sign in to the bada Developers website (<http://developer.bada.com/>). If you are not a member of the site, you will need to sign up. FIGURE 6-10 shows the sign in page on the Samsung bada Developers site. Once you have logged in to the site, please proceed to the next step.

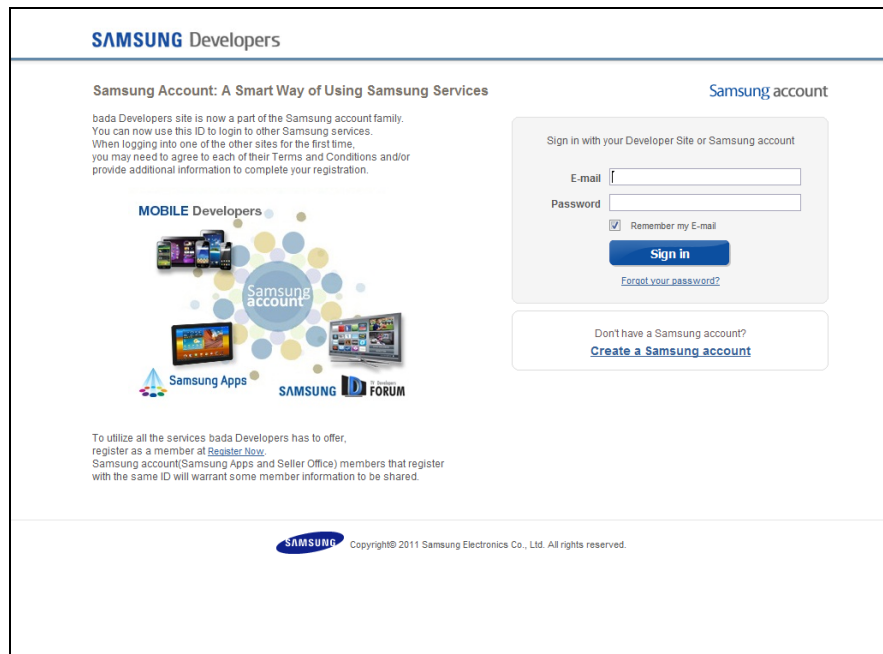


FIGURE 6-10 Sign in bada Developers website

- Step 2. You can see the main page of the site. Click “My Applications” (red circle).

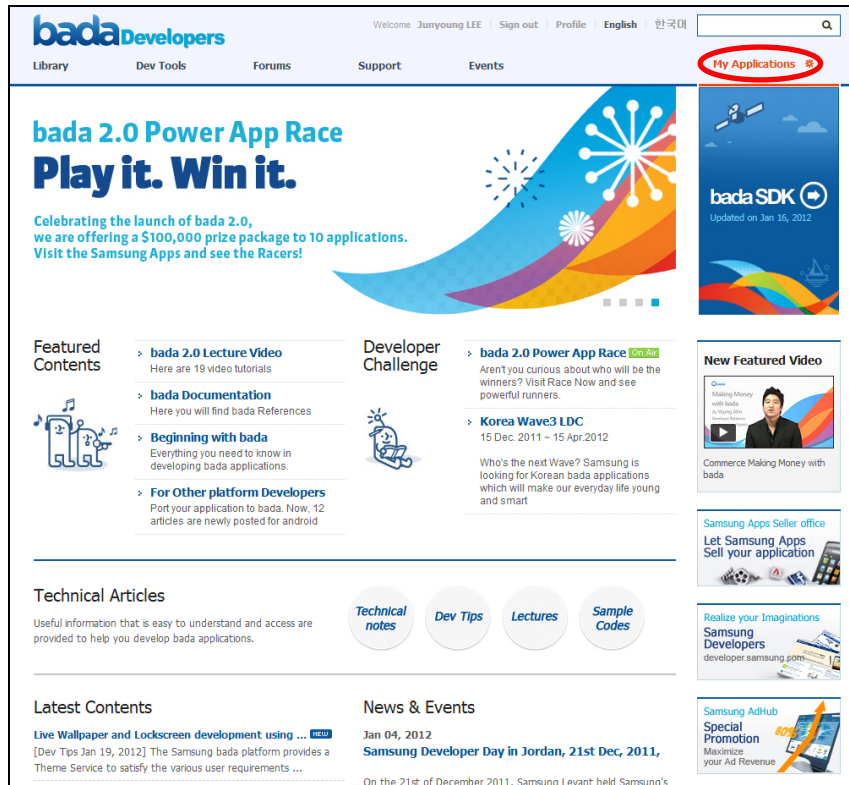


FIGURE 6-11 Click My Applications menu

- Step 3. FIGURE 6-12 shows the 1st step to make manifest.xml. Click “Generate a New Application ID” button (red circle).

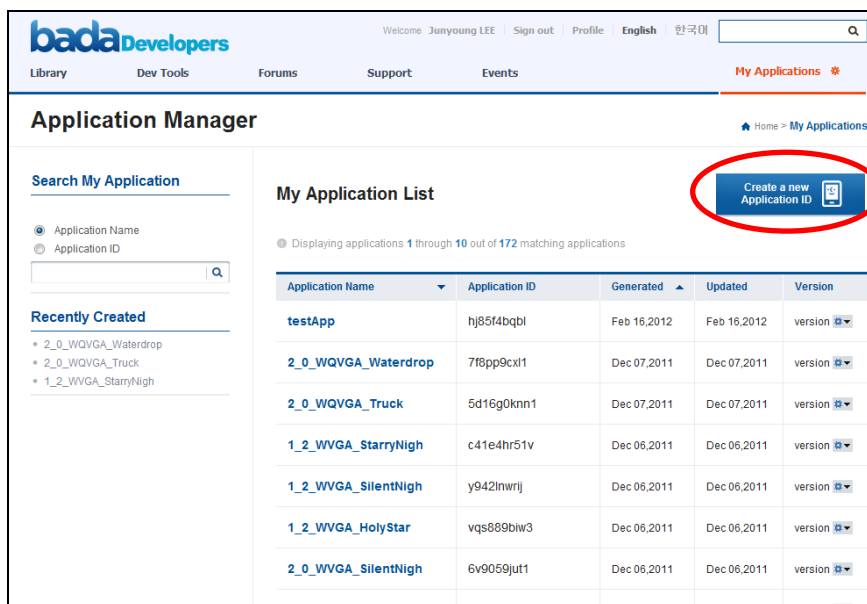


FIGURE 6-12 1st step to make manifest.xml

■ Step 4. FIGURE 6-13 shows the 2nd step required to make a manifest.xml. To ensure your applications name is available use the “Check Duplication” search (red circle and right picture). The description of your application is optional but recommended to give a pleasurable user experience. Then click the “Create” button.

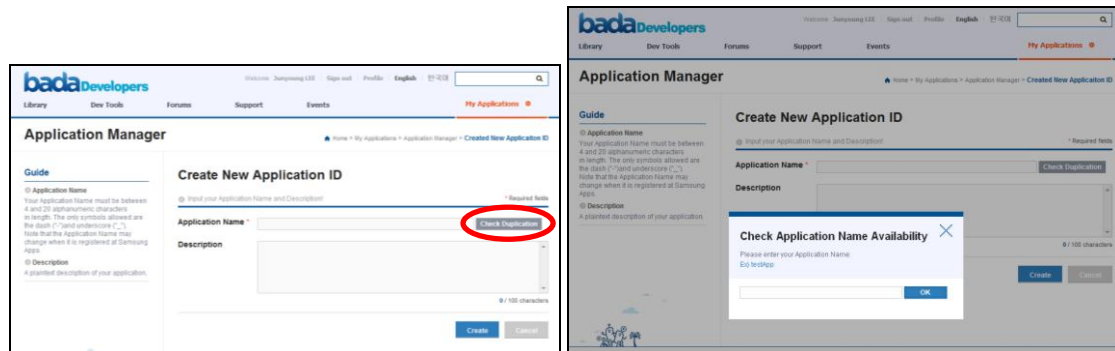


FIGURE 6-13 2nd step to make manifest.xml

■ Step 5. FIGURE 6-14 shows the 3rd step to make the manifest.xml. You can set your application version. Make sure each version of your application before setting the information. You have to change the previous value to proceed to the next step.

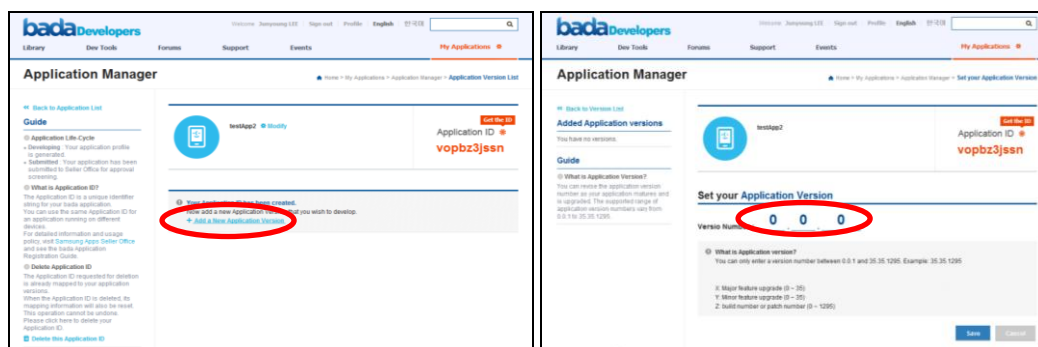


FIGURE 6-14 3rd step to make manifest.xml



■ Step 6. FIGURE 6-15 shows the 4th step to make the manifest.xml. You can set bada API version and application type at this step. Make sure each version and type (or supported device) of your application before setting these information. If your selection is 2.0, you have to set "Theme" for your application.

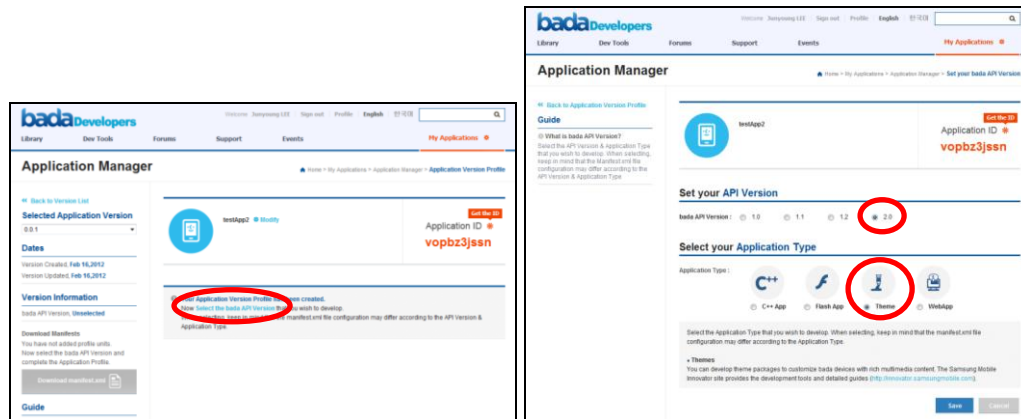


FIGURE 6-15 4th step to make manifest.xml

**\*Notice :** Please remember bada API Version will be different according to your theme type. Refer to the below information.

- bada 2.x Phone Theme : 2.0
- bada 1.x Phone Theme : 1.0, 1.1 or 1.2

You have to use a version 1.x of manifest file to register a bada 1.x theme on the Samsung Apps. If you use a version 2.0 of manifest file for it, your theme would be rejected by the Samsung Apps Theme Certification Team.



■ Step 7. FIGURE 6-16 shows the 5th step to make the manifest.xml file. You can download the manifest file onto your computer. Click the “Download manifest.xml” button (red circle).

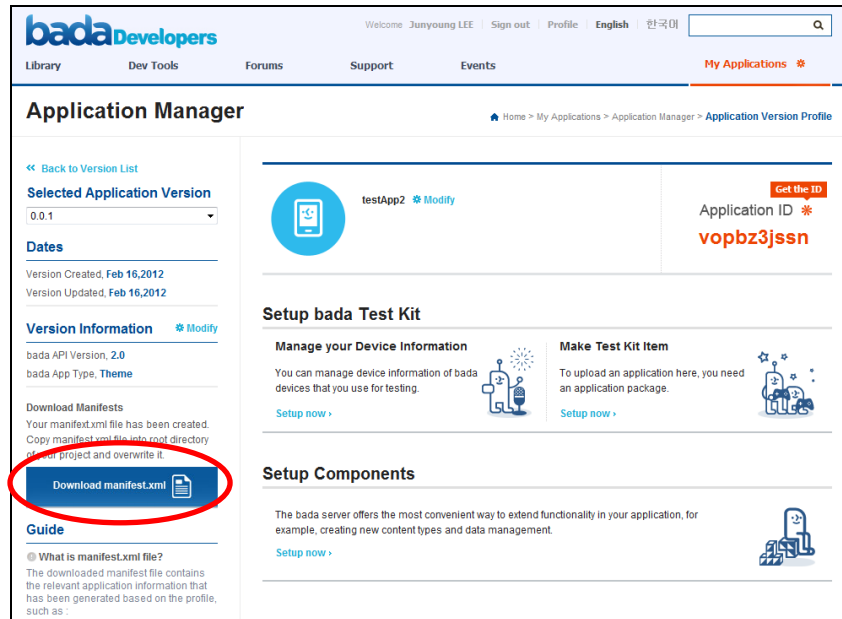


FIGURE 6-16 5th step to make manifest.xml

■ Step 8. FIGURE 6-17 shows the last step to make the manifest.xml. Save the manifest file on your computer. Please remember the saved position to set it in the Samsung Theme Designer.

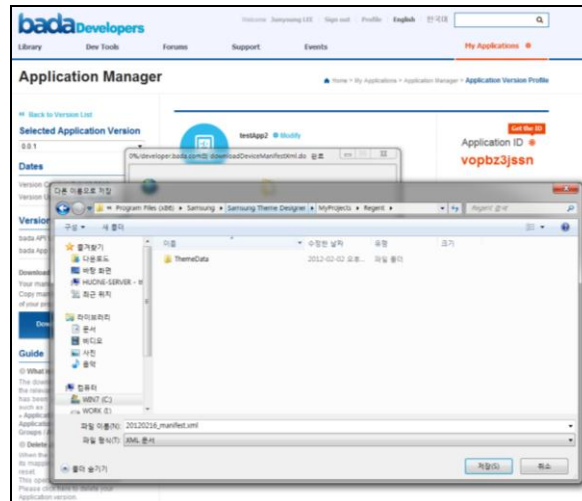


FIGURE 6-17 Save manifest.xml

Now you can set the Manifest item on the Samsung Theme Designer by using the saved file.

**\*Notice :** You can use only one manifest.xml per application. If you already used your manifest.xml for another application, you will need to create a new one.

### 6.1.5 Step 5 – bada Application : Import bada Resource

Once you finished preparing your bada resource (manifest.xml) for your application, you can import the resource into the Samsung Theme Designer. If you want to export your bada application, you must set this first.

- Manifest.xml

Choose “bada Export → Manifest” item on the Tree View Window then you can see manifest item on the Property Window (red circle). Browse to the manifest file created for this themed application here.

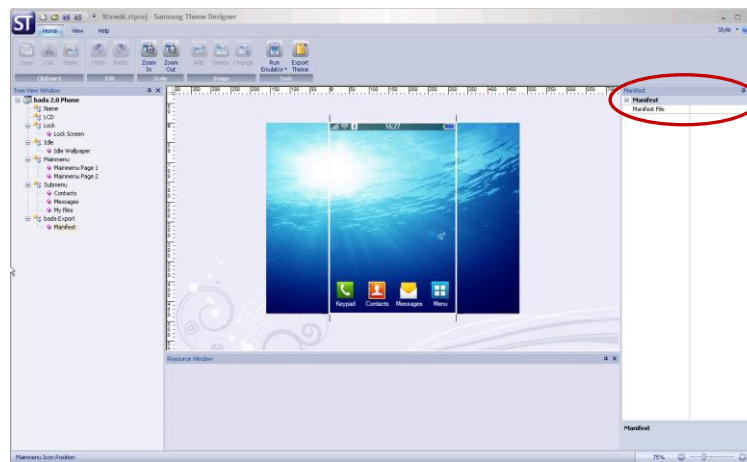


FIGURE 6-18 Import manifest.xml

### 6.1.6 Step 6 – Export

If you click the “Export Theme” button on the Ribbon menu, you will see the dialog box to export your theme. FIGURE 6-19 The Theme Export dialog shows the settings available for theme export. ‘Theme File’ is set as a default. You can release your theme for the target phone by clicking the “Export” button in the dialog.

**\*Notice :** If you click the “Export” button, you will see a popup dialog warning for your theme. You must read and agree to this warning to release your theme.

If you made your theme as a bada application with additional resources you can check “bada Application” on the dialog.

**\*Notice :** If you check “bada Application”, you will see the popup dialog containing the warning about your bada Application. You must read and agree to this to release your theme as a bada Application.

Before selecting “bada Application”, you will need to set more resources for your application.

The default file name and location for saving your theme or bada application will be set in the “Location” box on the dialog as shown in FIGURE 6-19, but if you want to change the name or location of the export file, click the “Search” button and then choose the theme name and its location. If you change the zip file name, your application will be installed with new name to the target directory.

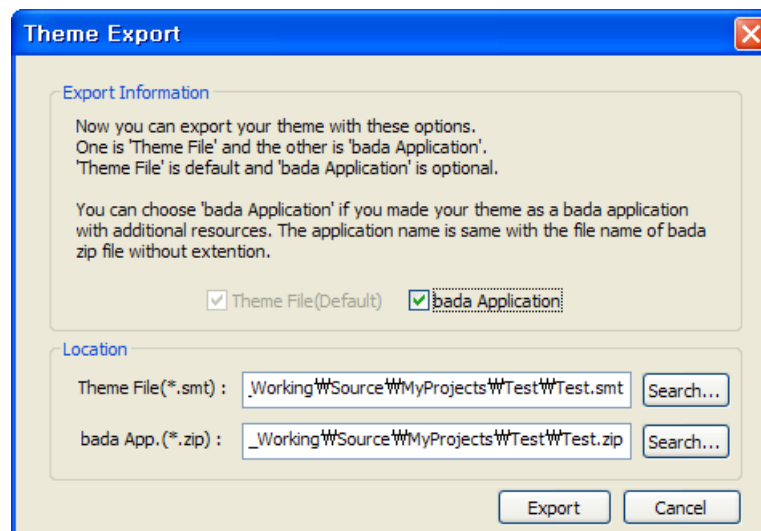


FIGURE 6-19 Theme Export Dialog

**\*Notice :** The elapsed time for exporting a theme is depending on the size of the resource files.

To learn more about registering your application on the Samsung Apps site, please visit to the Samsung Apps Seller Office website (<http://seller.samsungapps.com/>) as shown FIGURE 6-20 and refer to the site for more details.



FIGURE 6-20 Samsung Apps Seller Office

## 6.2 bada 1.x Phone Theme

### 6.2.1 Step 1 – Create New Theme

On the intro dialog, choose bada 1.x Phone under “Create New Theme”. After that, you will see a dialog box as below. Choose your handset model name first from the list box then select a type for your theme. You can also use a showcase project to create your own theme. FIGURE 6-21 shows you the dialog visible when creating a showcase project.



FIGURE 6-21 Create New Dialog – bada 1.x Phone Theme

### 6.2.2 Step 2 – Change Image

On the Tree view window, select “Mainmenu Page1” then replaces each icon file with your own on the Property Window, Resource Window or Working Window. FIGURE 6-22 shows file open dialog to change an image.

**\*Notice :** Do not use the icons in the default project or showcases for your own theme. If you use them, your theme will be rejected by the Samsung Apps Certification Team.

You can change the Idle Wallpaper or Battery Icon in the same way.

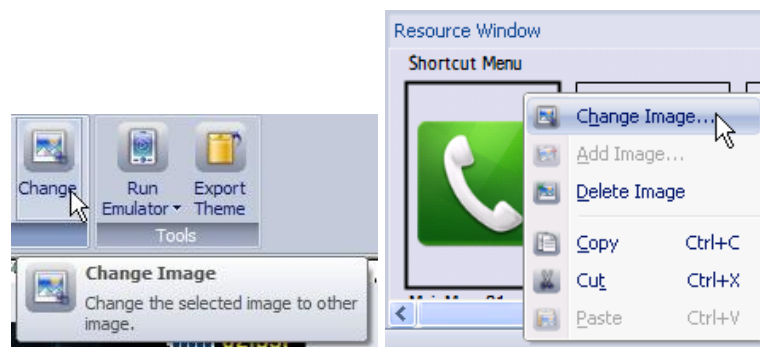


FIGURE 6-22 Change image – bada 1.x Phone Theme



### 6.2.3 Step 3 – Select Skin

On the Tree view window, select “Submenu”. You can change the value of the selected attribute on the Property Window. Especially you can change the color style of the Submenu by selecting the Skin.

From FIGURE 6-23 to 6-26 show the Skin Dialog and examples of the Skin that you can select.

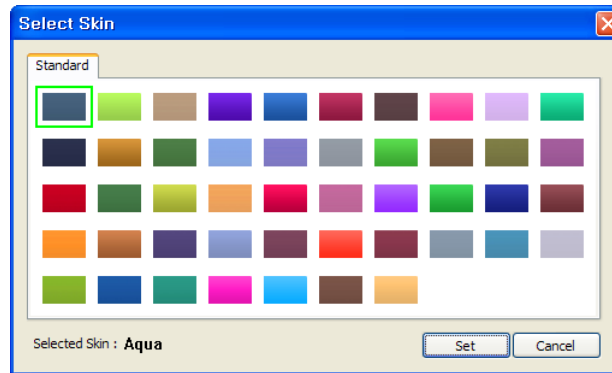


FIGURE 6-23 Select Skin Dialog

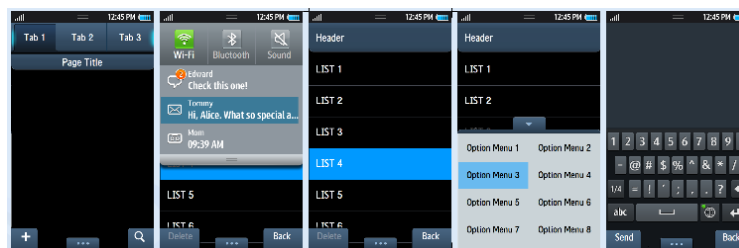


FIGURE 6-24 Skin – Aqua

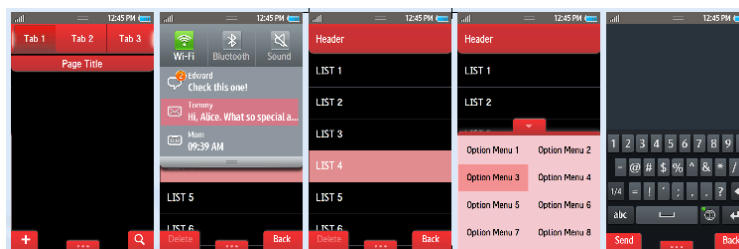


FIGURE 6-25 Skin – Kiss

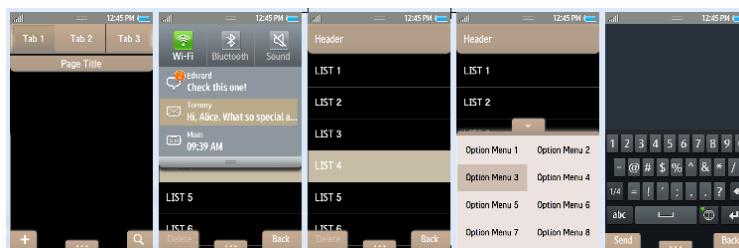


FIGURE 6-26 Calm Earth

#### 6.2.4 Step 4 – bada Application : manifest.xml

Please refer to 6.1.4.

**\*Notice** : Please remember bada API Version will be different according to your theme type. Refer to the below information.

- bada 2.x Phone Theme : 2.0
- bada 1.x Phone Theme : 1.0, 1.1 or 1.2

You have to use a version 1.x of manifest file to register a bada 1.x theme on the Samsung Apps. If you use a version 2.0 of manifest file for it, your theme would be rejected by the Samsung Apps Theme Certification Team.

## 6.2.5 Step 5 – bada Application : Images

You need two image files to make a bada application. One is the Mainmenu Icon and the other is the Launch Image.

- Mainmenu Icon

This is a Mainmenu Icon image to be shown in the Mainmenu after being installed on the target device. Supported image format is 'PNG'. Please refer to the limitation of each model as listed below.

- bada 1.x Phone Theme (480x800) : 100(w) x 96(h) with 1 transparent boundary area

- bada 1.x Phone Theme (240x400) : 50(w) x 50(h) with 1 transparent boundary area

**\*Notice** : You have to make a 1 pixel transparency boundary area around the Mainmenu Icon image for the bada application. If you don't make that transparent area, your application can't be registered to through the Samsung Apps site. Refer to the below image.(FIGURE 6-27 Red area)



FIGURE 6-27 bada Application Icon

- Launch Image

This is for the introductory image to be shown after executing your application on the target device. Please refer to the limitation of each model as listed below.

- bada 1.x Phone Theme (480x800) : 480(w) x 800(h)

- bada 1.x Phone Theme (240x400) : 240(w) x 400(h)

## 6.2.6 Step 6 – bada Application : Import bada Resources

Once you finished preparing your bada resources (manifest.xml, Mainmenu Icon and Launch Image) for your application, you can import the resources into the Samsung Theme Designer. If you want to export your bada application, you must set these first.

- Manifest.xml

Choose “bada Export → Manifest” item on the Tree View Window then you can see manifest item on the Property Window (red circle). Browse to the manifest file created for this themed application here.

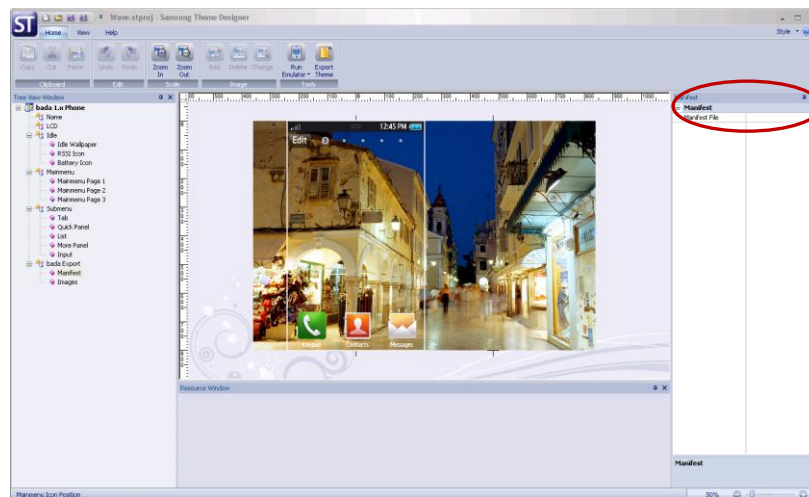


FIGURE 6-28 Import manifest.xml

- Mainmenu Icon and Launch Image

Choose “bada Export → Images” item on the Tree View Window then you can see Mainmenu Icon and Launch Image items on the Property Window (red circle). Browse to the Mainmenu Icon created for this themed application here.

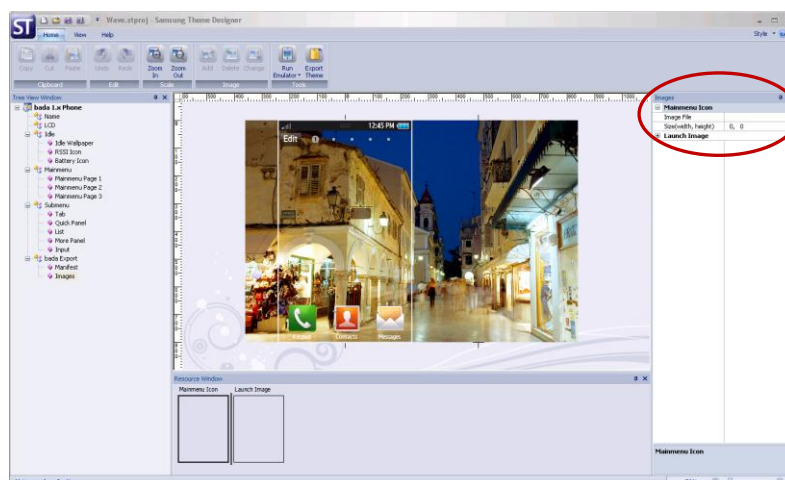


FIGURE 6-29 Import Mainmenu Icon and Launch Image

## 6.2.7 Step 7 – Export

Please refer to 6.1.6.

## 6.3 Feature (Touch) Phone Theme

### 6.3.1 Step 1 – Create New Theme

Please refer to 6.2.1.

### 6.3.2 Step 2 – Change Image

Please refer to 6.2.2.

### 6.3.3 Step 3 – Select Skin

Please refer to 6.2.3.

### 6.3.4 Step 4 – Export

The default file name and location for saving your theme are shown in the “Location” box of the “Theme Export” dialog as shown in FIGURE 6-30. If you want to change these, click the “Search” button and then set the name and location, then click “Export”.

**\*Notice :** If you click “Export” button, you will see the popup dialog warning about your theme. You have to read this message and agree to release your theme before continuing.

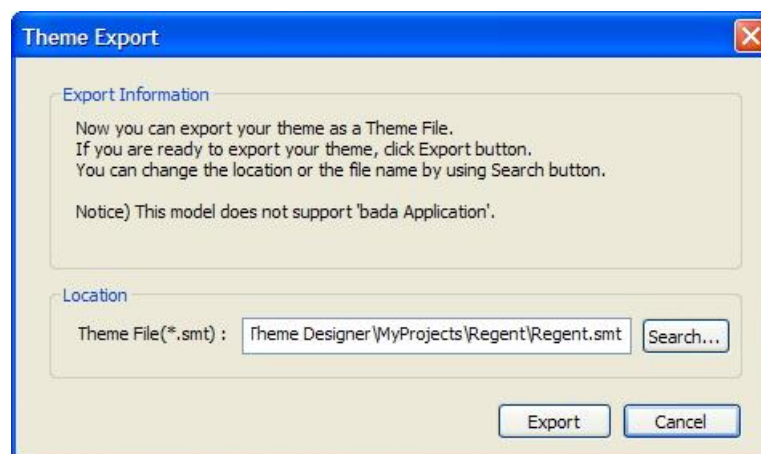


FIGURE 6-30 Theme Export Dialog

**\*Notice :** The elapsed time for exporting a theme is depending on the size of the resource files.

## 6.4 Feature (NonTouch) Phone Theme

### 6.4.1 Step 1 – Create New Theme

After choosing “Create New Theme” from the intro dialog, you will see a dialog box as below. Choose your handset model name first from the list box then select a type for your theme. You can also use a showcase project to create your own theme. FIGURE 6-31 shows you the dialog visible when creating a showcase project.

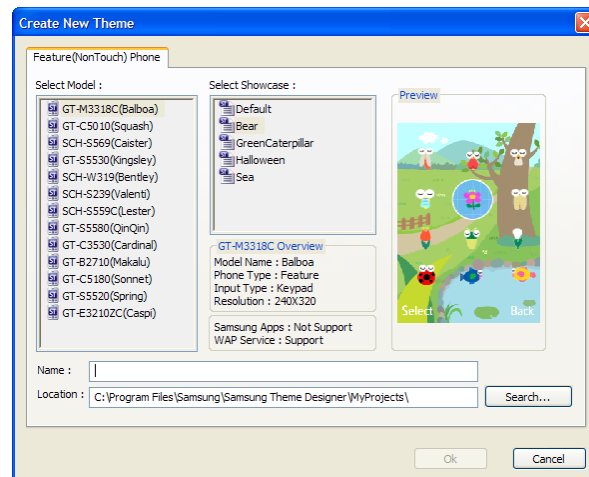


FIGURE 6-31 Create New Dialog – Feature (NonTouch) Phone Theme

### 6.4.2 Step 2 – Change Image

From the Tree view window, select “Idle Component”. You can set the idle components with Idle Type, Background Image or Background Animation by adjusting attribute values on the Property window. FIGURE 6-32 shows the file open dialog required to change an image.



FIGURE 6-32 Change image – Feature(NonTouch) Phone Theme

### 6.4.3 Step 3 – Edit Mainmenu

From the Tree view window, select “Mainmenu Component”. You can constitute Mainmenu components with Mainmenu Type, Icon Num, Focus Icon, UnFocus Icon and Focus Background by adjusting the attribute values on the Property window. You can see the working screen of Mainmenu on Working Window in FIGURE 6-33.



FIGURE 6-33 Edit Mainmenu – Feature (NonTouch) Phone Theme

### 6.4.4 Step 4 – Set Style

From the Tree view window, select “Style”. You can constitute the dialing picture and the list menu picture or etc. by adjusting the type of each item, the color information of each object and font style.

### 6.4.5 Step 5 – Export

Please refer to 6.3.4.



## 7. More Information

---

To get more information, please visit to the homepage of Samsung Developers Theme service (<http://developer.samsung.com/themes>).