



LED projector

E-Manual

P2 Series



E9719

September 2014

Revised Edition V3

COPYRIGHT AND WARRANTY INFORMATION

No part of this manual, including the products and software described in it, may be reproduced, transmitted, transcribed, stored in a retrieval system, or translated into any language in any form or by any means, except documentation kept by the purchaser for backup purposes, without the express written permission of ASUSTeK COMPUTER INC. ("ASUS").

Product warranty or service will not be extended if: (1) the product is repaired, modified or altered, unless such repair, modification or alteration is authorized in writing by ASUS; or (2) the serial number of the is defaced or missing.

ASUS PROVIDES THIS MANUAL "AS IS" WITHOUT WARRANTY OF ANY KIND, EITHER EXPRESS OR IMPLIED, INCLUDING BUT NOT LIMITED TO THE IMPLIED WARRANTIES OR CONDITIONS OF MERCHANTABILITY OR FITNESS FOR A PARTICULAR PURPOSE. IN NO EVENT SHALL ASUS, ITS DIRECTORS, OFFICERS, EMPLOYEES OR AGENTS BE LIABLE FOR ANY INDIRECT, SPECIAL, INCIDENTAL, OR CONSEQUENTIAL DAMAGES (INCLUDING DAMAGES FOR LOSS OF PROFITS, LOSS OF BUSINESS, LOSS OF USE OR DATA, INTERRUPTION OF BUSINESS AND THE LIKE), EVEN IF ASUS HAS BEEN ADVISED OF THE POSSIBILITY OF SUCH DAMAGES ARISING FROM ANY DEFECT OR ERROR IN THIS MANUAL OR PRODUCT.

Products and corporate names appearing in this manual may or may not be registered trademarks or copyrights of their respective companies, and are used only for identification or explanation and to the owners' benefit, without intent to infringe.

SPECIFICATIONS AND INFORMATION CONTAINED IN THIS MANUAL ARE FURNISHED FOR INFORMATIONAL USE ONLY, AND ARE SUBJECT TO CHANGE AT ANY TIME WITHOUT NOTICE, AND SHOULD NOT BE CONSTRUED AS A COMMITMENT BY ASUS. ASUS ASSUMES NO RESPONSIBILITY OR LIABILITY FOR ANY ERRORS OR INACCURACIES THAT MAY APPEAR IN THIS MANUAL, INCLUDING THE PRODUCTS AND SOFTWARE DESCRIBED IN IT.

Copyright © 2014 ASUSTeK COMPUTER INC. All Rights Reserved.

LIMITATION OF LIABILITY

Circumstances may arise where because of a default on ASUS' part or other liability, you are entitled to recover damages from ASUS. In each such instance, regardless of the basis on which you are entitled to claim damages from ASUS, ASUS is liable for no more than damages for bodily injury (including death) and damage to real property and tangible personal property; or any other actual and direct damages resulted from omission or failure of performing legal duties under this Warranty Statement, up to the listed contract price of each product.

ASUS will only be responsible for or indemnify you for loss, damages or claims based in contract, tort or infringement under this Warranty Statement.

This limit also applies to ASUS' suppliers and its reseller. It is the maximum for which ASUS, its suppliers, and your reseller are collectively responsible.

UNDER NO CIRCUMSTANCES IS ASUS LIABLE FOR ANY OF THE FOLLOWING: (1) THIRD-PARTY CLAIMS AGAINST YOU FOR DAMAGES; (2) LOSS OF, OR DAMAGE TO, YOUR RECORDS OR DATA; OR (3) SPECIAL, INCIDENTAL, OR INDIRECT DAMAGES OR FOR ANY ECONOMIC CONSEQUENTIAL DAMAGES (INCLUDING LOST PROFITS OR SAVINGS), EVEN IF ASUS, ITS SUPPLIERS OR YOUR RESELLER IS INFORMED OF THEIR POSSIBILITY.

SERVICE AND SUPPORT

Visit our multi-language web site at <http://support.asus.com>

Table of Contents

About this manual	5
Conventions used in this manual	6
Typography.....	6
Multi-language versions	6
Safety precautions.....	7
Using your LED projector.....	7
Servicing and replacement of parts	7
Caring for your LED projector	8
Proper disposal.....	8

Chapter 1: Knowing your LED projector

Features	10
Top view.....	10
Front view.....	12
Rear view	13
Left side	16
Right side.....	17
Bottom view	18
LED projector remote control.....	19
Replacing the battery	21

Chapter 2: Setting up

Operating your LED projector	24
1. Connect the LED projector to the power adapter.....	24
2. Connect the LED projector to your device.....	27
3. Adjust the height of the LED projector.	28
4. Press the power button.	30
5. Adjust the image focus.	31

Chapter 3: Using the onscreen display menu

Launching programs from the onscreen display menu.....	34
Control panel grid	35
Using your LED projector for the first time	36
Accessing your LED projector’s settings	38
Using Demo Mode.....	46
Enabling Demo Mode.....	46
Creating and playing your own demo video.....	47
Using the Media Center	48
Launching the Media Center.....	48
Opening files from the SD Card or USB Drive.....	49
Multi-language versions	56

Appendices

Federal Communications Commission Statement.....	58
Regional notice for California.....	58
Canadian Department of Communications Statement.....	59
Global Environmental Regulation Compliance and Declaration .	59
ASUS Recycling/Takeback Services.....	59
Support PC Timings	60
Specifications for P2 LED projector series	61

About this manual

This manual provides information about the hardware and software features of your LED projector through the following chapters:

Chapter 1: Knowing your LED Projector

This chapter details the parts of your LED projector and its accompanying remote control.

Chapter 2: Setting up

This chapter shows you how to set up your LED projector and use its parts for input device connection.

Chapter 3: Using the onscreen display menu

This chapter talks about the features of your LED projector's onscreen display menu and how to navigate it using the control panel.

Appendices

This section includes safety notices for your LED projector.

Conventions used in this manual

To highlight key information in this manual, some text are presented as follows:

IMPORTANT! This message contains vital information that must be followed to complete a task.

NOTE: This message contains additional information and tips that can help complete tasks.

WARNING! This message contains important information that must be followed to keep you safe while performing tasks and prevent damage to your LED projector's data and components.

Typography

Bold = This indicates a menu or an item that must be selected.

Italic = This indicates sections that you can refer to in this manual.

Multi-language versions

Download other language versions of this E-Manual via this website: <http://support.asus.com>

Safety precautions

Using your LED projector

- Refer to the manual and take note of the safety instructions before operating your LED projector.
- Follow the notes and warnings stated in the user manual.
- Do not place your LED projector on uneven or unstable surfaces.
- Do not use your LED projector in smoky environments. Smoke residue may cause build-up on critical parts and damage the LED projector or decrease its performance.
- Keep the LED projector's plastic packages out of the reach of children.
- Do not block or place anything near the LED projector's ventilation holes. Doing so may cause internal heat build-up that can degrade picture quality and damage the projector.
- Ensure that the operating voltage of your LED projector matches the voltage of your power source.

Servicing and replacement of parts

- Do not disassemble or attempt to service this LED projector by yourself. Contact your local ASUS service center for assistance.
- Risk of explosion if battery is replaced by an incorrect type. Dispose used batteries according to safety instructions and contact your local ASUS service center for assistance.
- When replacing parts of your LED projector, purchase items as specified by ASUS and contact your local service center for assistance.

Caring for your LED projector

- Switch off then unplug the LED projector from the power outlet before cleaning it.
- When cleaning the LED projector's housing, use a clean soft cloth dampened with water or a mix of water and neutral detergent. Wipe it dry using a soft dry cloth.
- Ensure that the lens is cool before cleaning it. Gently wipe the lens using a lens cleaning paper. Do not touch the lens with your hands.
- Do not use liquid or aerosole cleaners, benzene, or thinners on your LED projector.
- Never operate this LED projector immediately after moving it from a cold location. When the LED projector is exposed to a drastic change in temperature, moisture may condense on the lens and its other internal parts. To prevent this, use the unit two (2) hours after an extreme or sudden change in temperature occurs.

Proper disposal

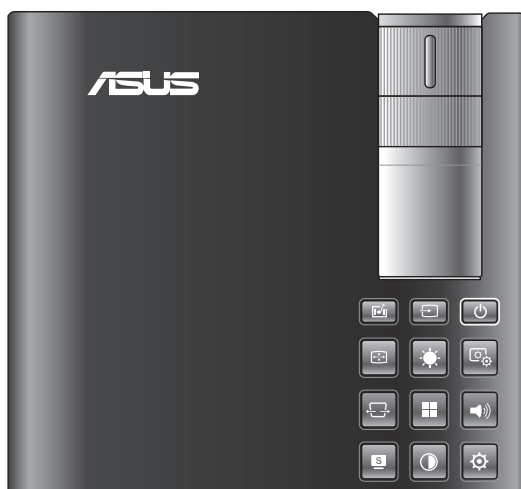


Do not throw your LED projector in municipal waste. This product has been designed to enable proper reuse of parts and recycling. The symbol of the crossed out wheeled bin indicates that the product (electrical, electronic equipment and mercury-containing button cell battery) should not be placed in municipal waste. Check local regulations for disposal of electronic products.



Do not throw the battery in municipal waste. The symbol of the crossed out wheeled bin indicates that the battery should not be placed in municipal waste.

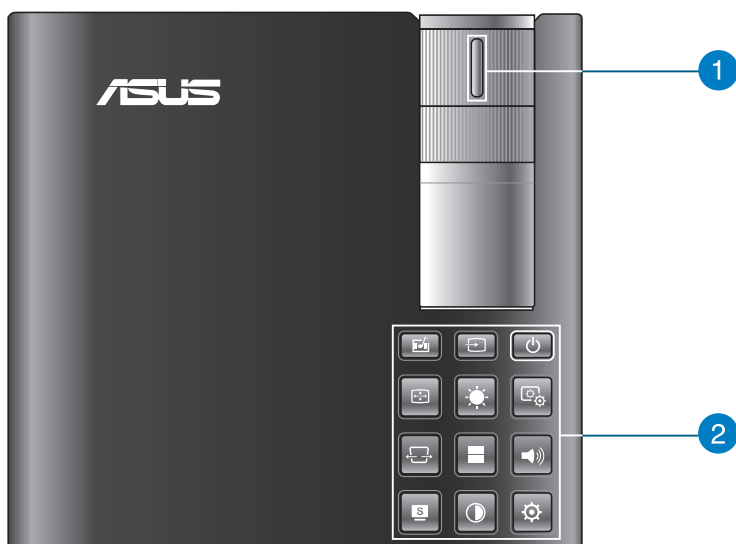
Chapter 1: *Knowing your LED projector*



Features

Top view

NOTE: Actual appearance may vary depending on model.



1 Focus ring

The focus ring allows you to adjust the image focus of your LED projector.

2 Control panel buttons

The control panel buttons allow you to navigate the onscreen display menu. Individually, these buttons also correspond to a specific LED projector setting as indicated below.



Media Center



Input



Power



Image Position



Brightness



Image Setting



Keystone



Main menu/OK



Volume



Splendid



Contrast



Setup



VGA

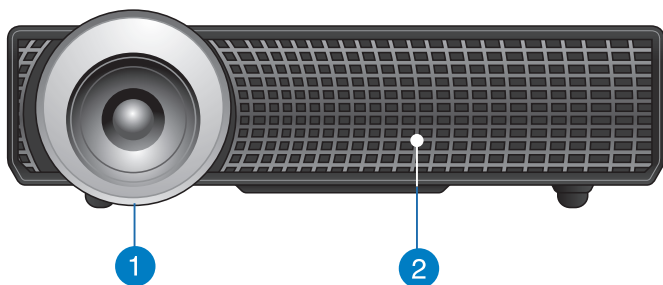


HDMI

NOTE: For more information on using the control panel buttons to access your LED projector's settings, refer to the *Accessing your LED projector's settings* section in this manual.

** on selected models only*

Front view



1 Lens

The lens projects video or image files onscreen from your input device.

WARNING! Do not touch the lens using your hands or any sharp object.

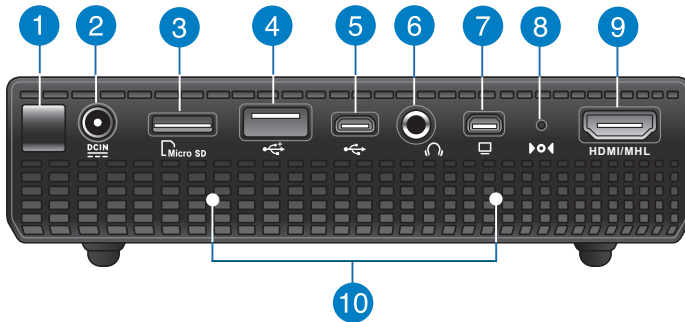
2 Air vents

The air vents allow cool air to enter and warm air to exit the LED projector.

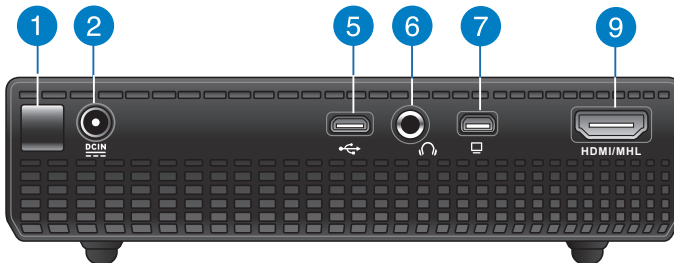
WARNING! Ensure that paper, books, clothing, cables, or other objects do not block any of the air vents or else overheating may occur.

Rear view

P2B/P2M



P2E



1 Infrared (IR) sensor

The IR sensor detects signal from your LED projector's remote control, allowing you to access the LED projector's control panel from a distance of up to ten (10) meters and a receiving angle of 15°.

2 Power (DC) input port

Insert the bundled power adapter into this port to charge the battery pack and supply power to your LED projector.

WARNING! The adapter may become warm to hot while in use. Do not cover the adapter and keep it away from your body while it is connected to a power source.

3 Micro SD card reader

This built-in memory card reader supports microSD and microSDHC card formats.

4 USB 2.0 port

The USB 2.0 (Universal Serial Bus 2.0) port is compatible with USB 2.0 or USB 1.1 devices.

5 Micro USB 2.0 port*

This port also allows you to transfer data from your input device to your LED projector.

6 Audio output jack port

The audio output jack port allows you to connect your LED projector to amplified speakers or headphones.

7 Mini VGA port

The mini VGA port allows you to connect your LED projector to a standard VGA-compatible device.

8 Manual reset hole*

Insert a straightened paperclip in this hole to restore your LED projector to its default settings.

**on selected models only*

9 HDMI/MHL port

This port is for the HDMI (High-Definition Multimedia Interface) connector and also supports MHL (Mobile HI-Definition Link) compatible devices. This port is HDCP compliant for HD DVD, Blu-ray, and other protected content playback.

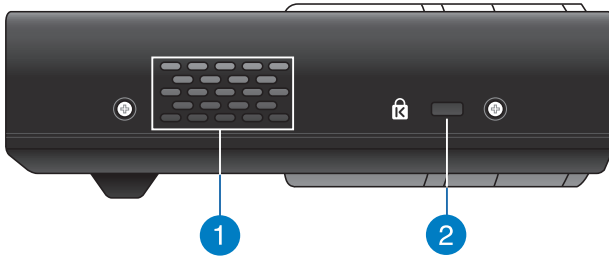
10 Air vents

The air vents allow cool air to enter and warm air to exit the LED projector.

WARNING! Ensure that paper, books, clothing, cables, or other objects do not block any of the air vents or else overheating may occur.

**on selected models only*

Left side



1 Air vents

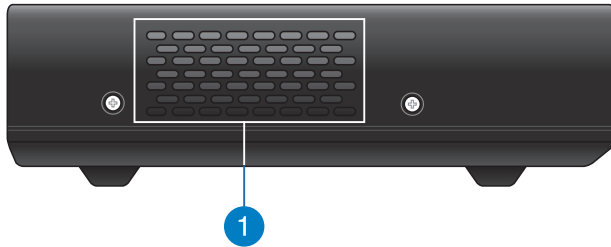
The air vents allow cool air to enter and warm air to exit the LED projector.

WARNING! Ensure that paper, books, clothing, cables, or other objects do not block any of the air vents or else overheating may occur.

2 Kensington® security slot

The Kensington® security slot allows you to secure your LED projector using Kensington® compatible LED projector security products.

Right side

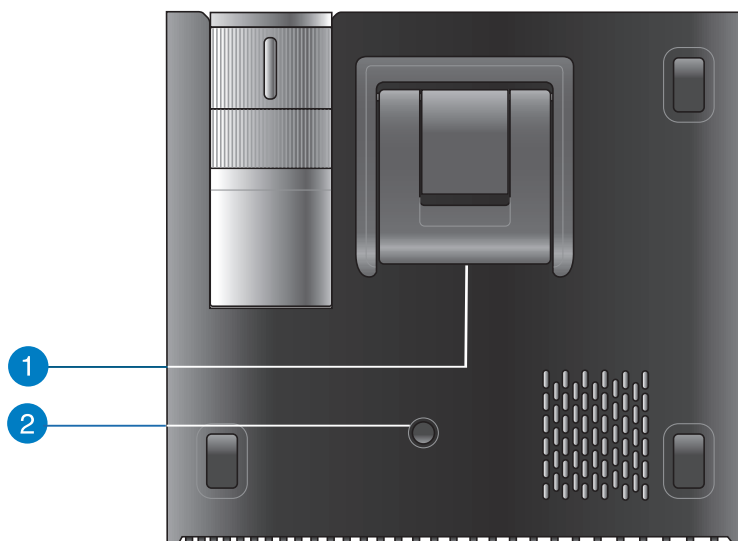


1 Air vents

The air vents allow cool air to enter and warm air to exit the LED projector.

WARNING! Ensure that paper, books, clothing, cables, or other objects do not block any of the air vents or else overheating may occur.

Bottom view



1 Built-in stand

This LED projector comes with a built-in stand that allows you to adjust the height of the projector by either 9° or 12°.

2 Tripod socket

Connect the LED projector to a tripod using this socket.

LED projector remote control

NOTE: Actual appearance may vary depending on model.




1 Control panel buttons


The control panel buttons allow you to navigate the onscreen display menu. Individually, these buttons also correspond to a specific LED projector setting.


NOTE: For more details on using the control panel buttons, refer to the *Using the onscreen display menu* section in this manual.


2 Remote control buttons


These additional buttons allow you to use the LED projector from a distance of up to 10 meters.


 Back - Press this button to go back to the previous screen.

 Home - Press this button to go back to the home screen.

 Laser pointer - Press this button to activate the laser pointer of the remote control.

 Rewind - Press this button to rewind your audio or video file.

 Play/Pause - Press this button to play or stop your audio or video file.

 Fast-forward - Press this button to fast-forward your audio or video file.

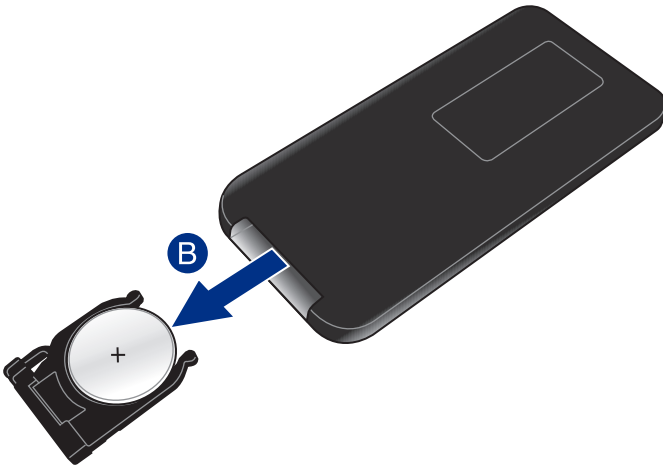
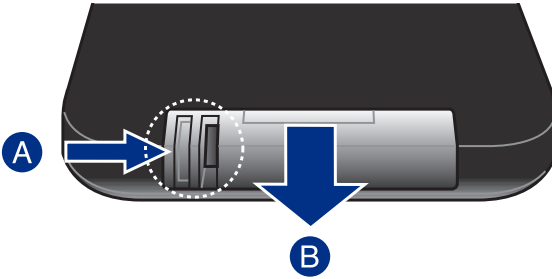
3 Battery compartment

The battery compartment allows you to use a CR2025 or CR2032 lithium coin battery to power your LED projector's remote control.

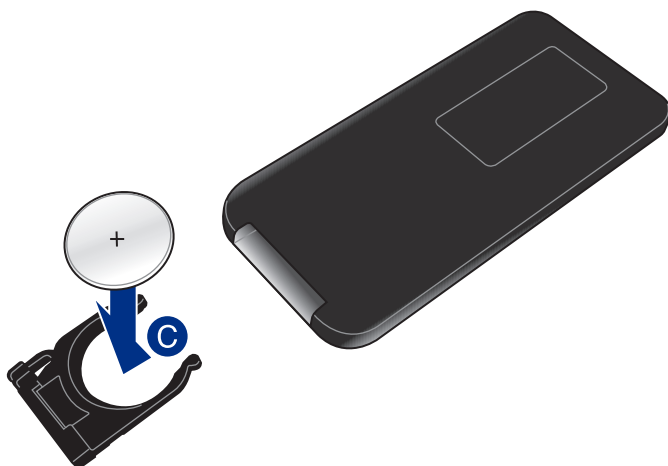
NOTE: For more details on using the battery compartment, refer to the *Replacing the battery* section in this manual.

Replacing the battery

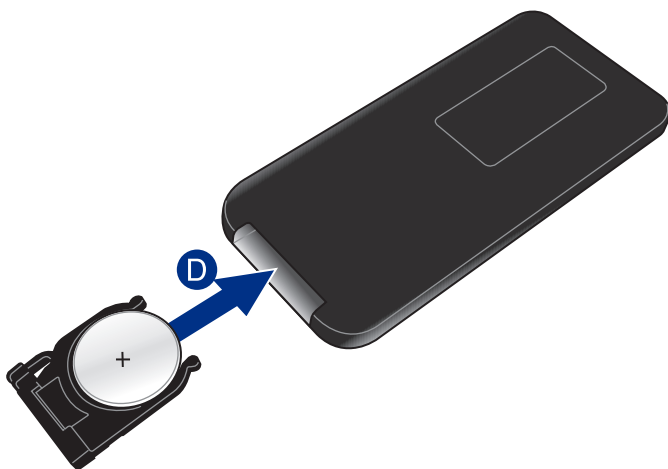
- A. Move the battery compartment's latch to the right to unlock the battery holder.
- B. Pull down the battery holder and remove it completely out of the battery compartment.



- C. Remove the old battery then insert the new lithium coin battery into the battery holder with the positive side (+) facing up.



- D. Slide the battery holder back into the battery compartment. Push it all the way in until you hear a soft click, indicating that the battery compartment is locked back in place.



Chapter 2: Setting up



Operating your LED projector

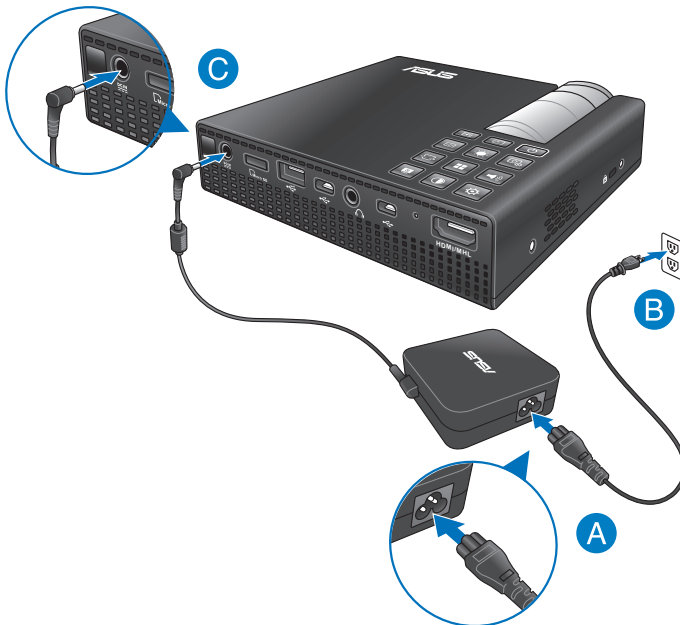
This portable LED projector allows you to plug and play your devices so you can easily open multimedia files.

For your safety and to maintain the quality of this unit, refer to the following steps when operating your LED projector.

1. Connect the LED projector to the power adapter.

- A. Connect the AC/DC power cord to the power adapter.
- B. Connect the AC power cord to a power source.
- C. Connect the DC power connector to your LED projector.

NOTE: This LED projector is also compatible with ASUS power adapters within the 65W to 90W range.



WARNING!

Read the following precautions for your LED projector's battery pack.

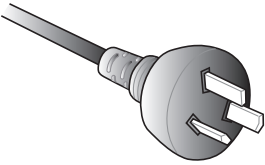
- Only ASUS-authorized technicians should remove the battery inside the device.
 - The battery used in this device may present a risk of fire or chemical burn if removed or disassembled.
 - Follow the warning labels for your personal safety.
 - Risk of explosion if battery is replaced by an incorrect type.
 - Do not dispose of in fire.
 - Never attempt to short-circuit your LED projector's battery.
 - Never attempt to disassemble and reassemble the battery.
 - Discontinue usage if leakage is found.
 - The battery and its components must be recycled or disposed of properly.
 - Keep the battery and other small components away from children.
-

AC power cord requirements

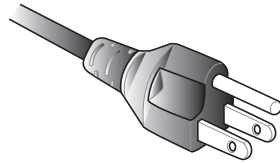
Use the correct AC plug type according to your current location.

IMPORTANT! Contact your sales dealer if the AC power cord bundled with your LED projector does not match your local power source.

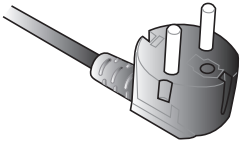
NOTE: We highly recommend that you use a video source device that also uses a grounding type plug to prevent signal interference due to voltage fluctuations.



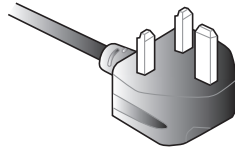
for Australia and Mainland China



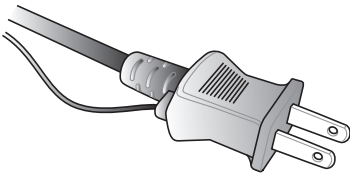
for U.S.A., Canada, and Taiwan



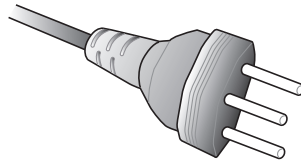
for Continental Europe



for U.K.

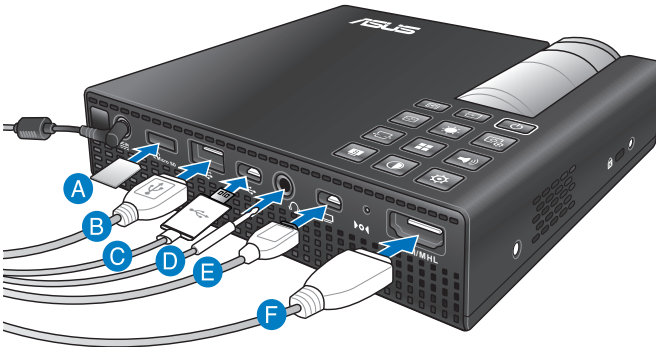


for Japan

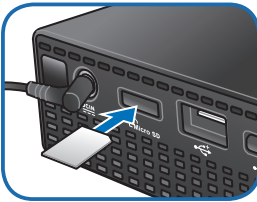


for Sweden

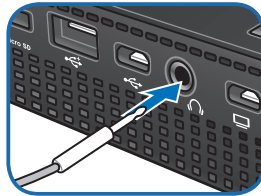
2. Connect the LED projector to your device.



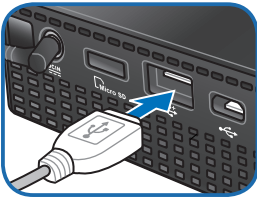
A Micro SD card



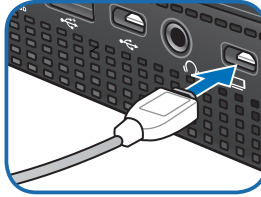
D Audio output jack



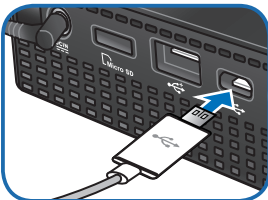
B USB 2.0



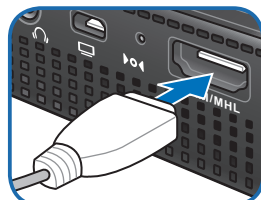
E Mini VGA



C Micro USB



F HDMI/MHL



3. Adjust the height of the LED projector.

Your LED projector comes with a built-in stand that helps adjust the image height onscreen.

WARNING!

- Possibly hazardous optical radiation emitted from this product. Do not stare at operating lamp. May be harmful to the eyes.
 - Ensure that the built-in stand is fully retracted before placing the LED projector inside the projector bag.
-

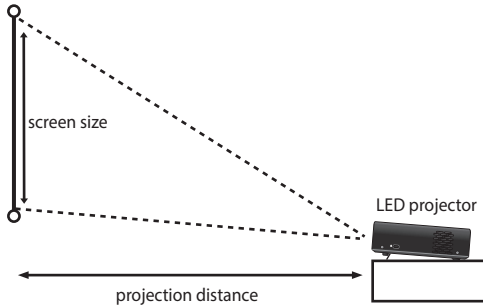
NOTES:

- Place the LED projector on a stable flat surface.
 - Keep a space of 30 cm or more between the sides of the LED projector.
 - Consult your dealer for special installation procedures like suspending the LED projector from the ceiling.
-



Screen size and projection distance table

Adjust the LED projector's distance from the screen using the table below.



Screen size - 16:10		Projection distance
(inches)	(millimeters)	(meters)
30	762	0.71
40	1016	0.95
60	1524	1.42
80	2032	1.90
100	2540	2.37
120	3048	2.84
140	3556	3.32
160	4064	3.79

4. Press the power button.

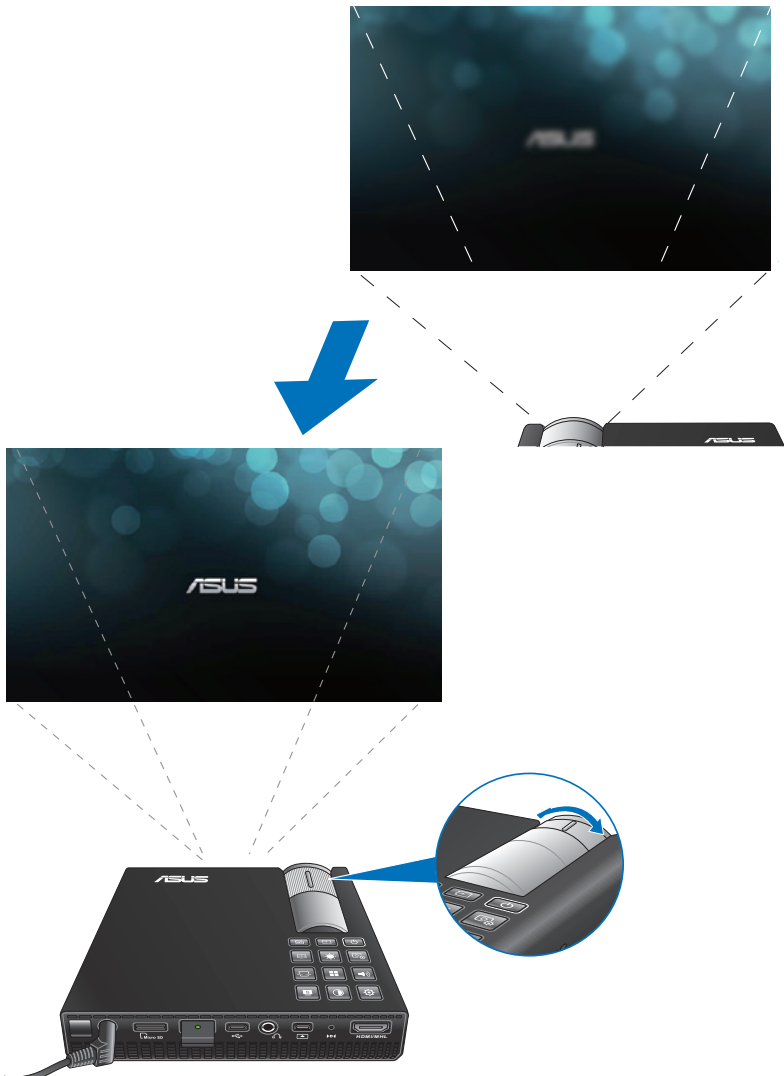
NOTE: For safety reasons, some models require you to press the power button for about 2 seconds to turn on your LED projector.



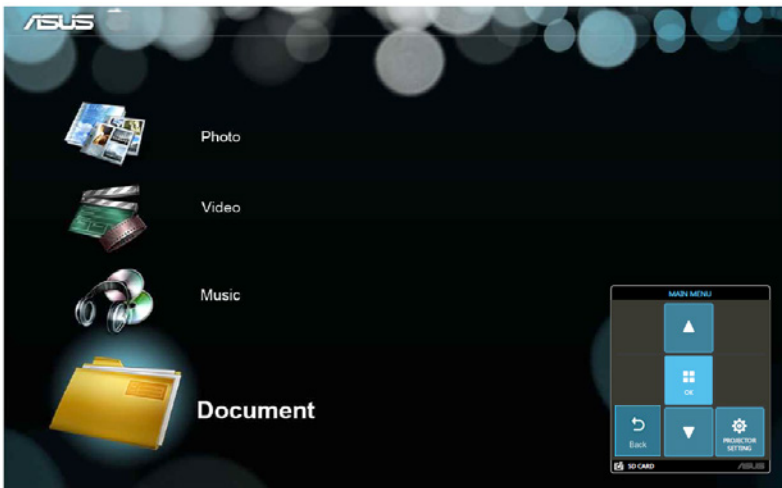
5. Adjust the image focus.

Move the focus ring to the left or to the right to adjust the image focus.

NOTE: Use a still image when adjusting the onscreen display.



Chapter 3: Using the onscreen display menu

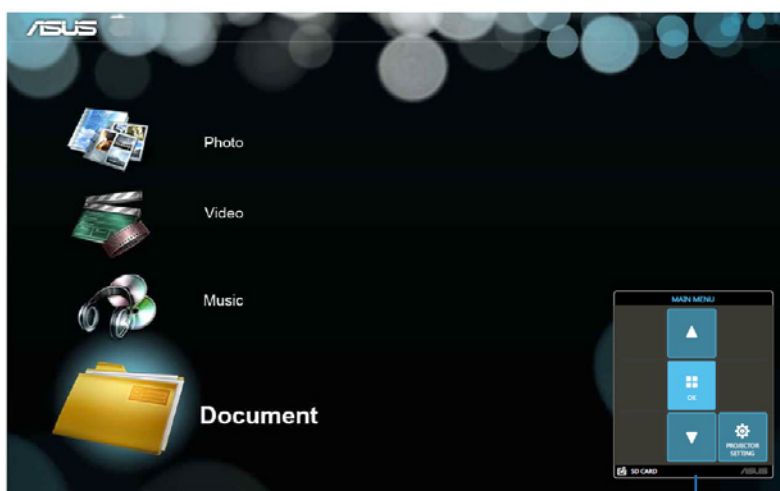


Launching programs from the onscreen display menu

NOTE: The following screenshots are for reference only and may be updated without prior notice. Screenshots may also vary depending on the LED projector model.

The onscreen display menu contains a set of programs and settings designed to maximize your use of the LED projector. You can navigate inside the onscreen display menu using the control panel buttons on your LED projector or its accompanying remote control.


To launch options or programs shown on the onscreen display menu, refer to the control panel grid shown as below.



control panel grid

Control panel grid

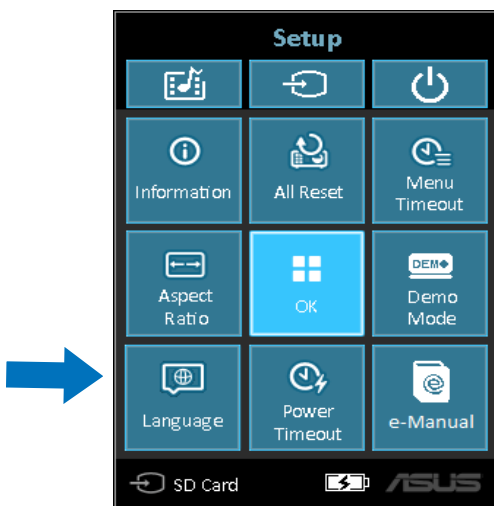
The control panel grid guides you through the process of using the control panel buttons to launch active options inside your onscreen display menu.

The control panel grid represents the 8 buttons surrounding the  button on the control panel.

control panel buttons



control panel grid sample



Using your LED projector for the first time

Refer to the following steps when using your LED projector for the first time.

1. Set up your LED projector then press the power button. The ASUS welcome screen appears to indicate that the LED projector is now turned on.
2. Using the control panel buttons, select the language you want to use in your LED projector.
3. In the Demo Mode control panel grid, select either of the following options:

On - This option launches the demo video of your LED projector. If you choose this, proceed to step 4.

IMPORTANT!


- This option automatically launches the Demo Mode control panel grid whenever you turn on your LED projector.
- When this option is enabled, your LED projector automatically launches the demo video.

NOTE: To know more about the functions of Demo Mode, refer to the *Using Demo Mode* section in this manual.

Off - This option disables viewing demo videos on your LED projector and proceeds to scan for connected input devices.

IMPORTANT! This option deactivates the Demo Mode control panel grid and instead launches the Input control panel grid whenever you turn on your LED projector.

NOTE: To know more about the functions of Demo Mode, refer to the *Using Demo Mode* section in this manual.

4. After watching the demo video or while watching the demo video, you can press  to proceed to scanning for connected input devices.

Accessing your LED projector's settings

Aside from using the control panel buttons to navigate the onscreen display menu, you can also use each of these buttons to launch the following LED projector settings:

IMPORTANT! Press **Projector Setting** on the control panel grid to use these functions in the Media Center.

Power

Press this button to turn the LED projector on or off.

Brightness

Press this button to adjust the brightness of your projection onscreen.

Keystone

Press this button to correct distorted images resulting from an angled projection.

Main Menu/OK

Press this button to launch the main menu of your LED projector settings, to activate a selected item, or exit the current control panel grid.

Volume

Press this button to adjust the volume of the audio file played on your LED projector.



Contrast

Press this button to set the difference between lighten or darken your projection onscreen.



Media Center*

Press this button to launch the Media Center.

NOTE: For more details, refer to the *Using the Media Center* section in this manual.



VGA*

Press this button to start the connection with your input device via the mini VGA port.



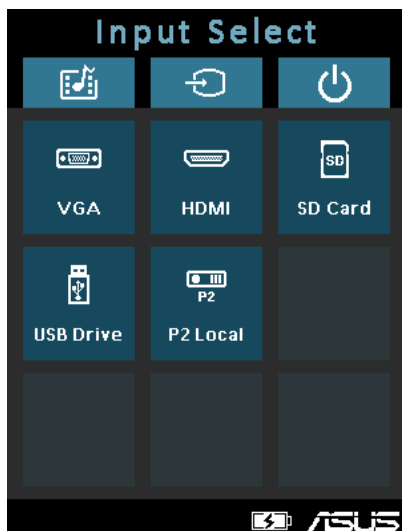
HDMI*

Press this button to start the connection with your input device via the HDMI port.

** on selected models only*



Press this button to scan the connected devices to your LED projector.



** on selected models only*



Splendid

Press this button to activate either of the following display modes: **Standard, Black Board, White Board, Dynamic, Game, Theater, Scenery.**

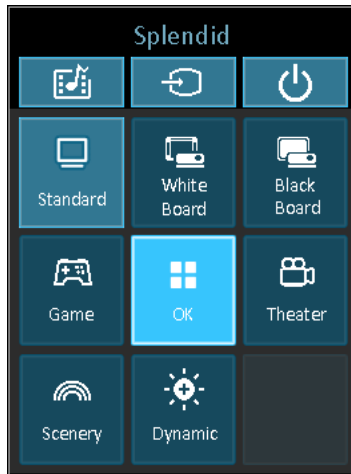
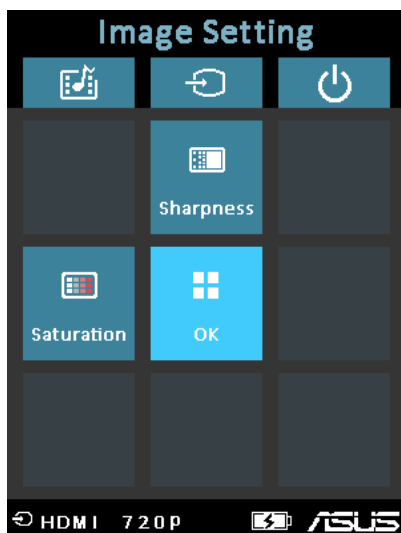




Image Setting

Press this button to access the following image settings:

NOTE: This function only works when using the HDMI port.

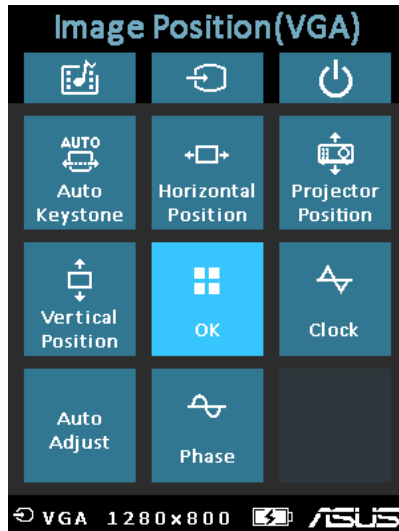


- **Sharpness** - This option allows you to sharpen or soften the appearance of the projected image.
- **Saturation** - This option allows you to adjust the hue of the projected image.



Image Position

Press this button to access the following image position settings:

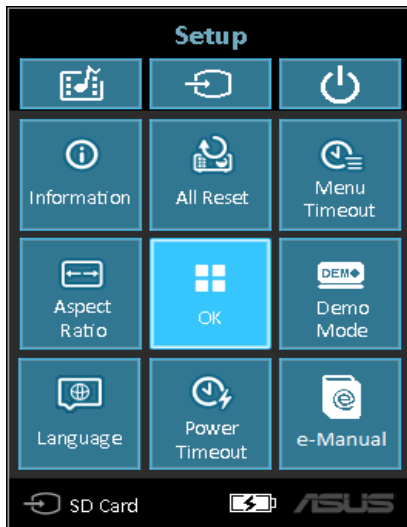


- **Auto Keystone** - This option allows you to automatically adjust the alignment of your image.
- **Horizontal Positioning** - This option allows you to shift the image's position horizontally.
- **Projector Position** - This option allows you to adjust the position of the projected image based from the location of your LED projector.
- **Vertical Position** - This option allows you to vertically shift the image position.
- **Auto Adjust**- This option allows you to automatically adjust the projection of image onscreen.
- **Phase** - This option allows you to adjust the number of lines emitted by the computer's signal so that the LED projector relative to the computer's signal.
- **Clock** - This option allows you to adjust the frequency of the LED projector relative to the computer.



Setup

Press this button to access the following LED projector settings:



- **Information** - This option shows you the following information about your LED projector: currently used input port, LED projector's model name, and currently use Splendid mode.
- **All Reset** - This option allows you to reset all the settings you have currently set up for your LED projector.
- **Menu Timeout** - This option allows you to set the timeout rate, according to seconds, before the onscreen display menu disappears from your projection screen.
- **Aspect Ratio** - This option allows you to change the projection of your display according to the following aspect ratios: AUTO, 4:3, 16:9, and 16:10.

- **Language** - This option allows you to select the language to use on your LED projector's onscreen display menu.
- **Power Timeout** - This option allows you to set the number of seconds before your LED projector automatically shuts down when not in use.
- **Demo Mode** - This option turns the demo video features of your LED projector on or off.

NOTE: For more details, refer to the *Using Demo Mode* section in this manual.

- **E-Manual** - This option launches the LED projector's E-Manual.

Using Demo Mode

View the internal demo video that comes with your LED projector or your own demo videos using Demo Mode.

Demo Mode is automatically enabled in your LED projector if you chose **On** when you turn on the device for the first time.

However, choosing **Off** disables this feature. In this case, you can enable this feature using the following steps.

Enabling Demo Mode

1. Launch the **Setup** control panel grid.
2. Choose **Demo Mode > On**.

IMPORTANT!

- This option automatically launches the Demo Mode control panel grid whenever you turn on your LED projector.
 - When this option is enabled, your LED projector automatically launches the demo video from its internal memory or from your SD card or USB drive as the LED projector goes into stand-by mode.
-

Creating and playing your own demo video

Your LED projector allows you to create simple demo videos using a series of photos presented as a slideshow. You may also add a background music to go with the slideshow as it plays onscreen.

Create your own demo video and play this on your LED projector using the following steps:

1. Create a folder named ASUS in your SD Card or USB drive.
2. Select the photos you want to include in your demo video and one music file (optional).

IMPORTANT! You may only choose one music file as your demo video's background music.

NOTE: Refer to the *Specifications for P2 LED projector series* section in this manual to see the list of compatible photo and music file formats.


3. Copy the selected files inside the ASUS folder you created.
4. Connect the SD card or USB drive to your LED projector.
5. Turn on the LED projector. If Demo Mode is enabled, press **On** to play the demo video stored in the ASUS folder of your SD card or USB drive.

Using the Media Center

Show photos, play videos, listen to audio music, and view documents using your LED projector's Media Center. Through the Media Center, you can also connect to USB-enabled input devices and micro SD cards.

Launching the Media Center

The Media Center automatically launches after the LED projector detects a micro SD card or external drive.

You can also manually launch the Media Center by pressing  from the control panel.

Opening files from the SD Card or USB Drive

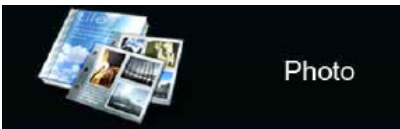
Photo



Supported image file formats:

- JPG
- JPEG
- BMP (bitmap)

To open an image file:

1. Connect your input device to the LED projector.
2. Turn on the LED projector to launch the Media Center's onscreen display menu.
3. Select **Photo**.



4. Refer to the control panel grid to help you browse and select the file from your input device.
5. Press  to open the selected folder or file.
6. After opening the file, press  on the control panel to launch the Photo Slideshow control panel grid.

Video

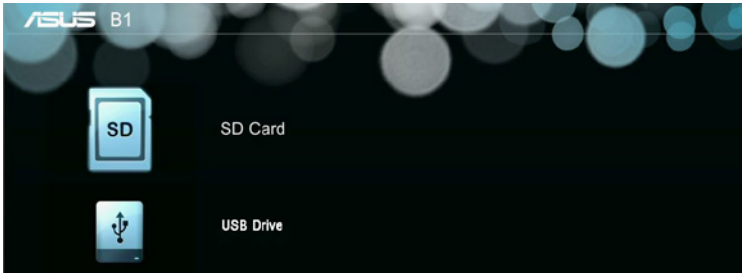
File Type	Video Codec	Resolution	Frame Rate	Audio Codec
AVI	H.264 BP, MP, HP @ L4.1 MPEG-4 ASP @ L5 MPEG-4 SP Divx High Definition Xvid H.263 Profile 3 Level 70 MPEG-1 MPEG-2 MP@HL MJPEG Baseline 4:4:4	1080P	30 fps	MPEG-1 L1-3 HE-AACv1 PCM / G.711
MOV	H.264 BP, MP, HP @ L4.1 MPEG-4 ASP @ L5 MPEG-4 SP Divx High Definition Xvid H.263 Profile 3 Level 70 MPEG-1 MPEG-2 MP@HL MJPEG Baseline 4:4:4	1080P	30 fps	MPEG-1 L1-3 HE-AACv1 AMR-NB AMR-WB PCM / G.711
MP4	H.264 BP, MP, HP @ L4.1 MPEG-4 ASP @ L5 MPEG-4 SP Divx High Definition Xvid H.263 Profile 3 Level 70 MPEG-1 MPEG-2 MP@HL	1080P	30 fps	MPEG-1 L1-3 HE-AACv1 AMR-NB AMR-WB
MPG	MPEG-1 MPEG-2 MP@HL	1080P	30 fps	MPEG-1 L1-3
3GP 3G2	H.264 BP, MP, HP @ L4.1 MPEG-4 ASP @ L5 MPEG-4 SP Divx High Definition Xvid H.263 Profile 3 Level 70 MPEG-1 MPEG-2 MP@HL	1080P	30 fps	HE-AACv1 AMR-NB AMR-WB

(continued on the next page)

File Type	Video Codec	Resolution	Frame Rate	Audio Codec
WMV ASF	MPEG-4 SP Divx High Definition Xvid VC-1/WMV9	1080P	30 fps	WMA8/9
MKV	H.264 BP, MP, HP @ L4.1	1080P	30 fps	MPEG-1 L1-3 HE-AACv1 PCM / G.711 AC3
VOB	MPEG-2 MP@HL	1080P	30 fps	MPEG-1 L1-3 AC3 DTS
DAT	MPEG-1	1080P	30 fps	MPEG-1 L1-3
TS	MPEG-2 MP@HL	1080P	30 fps	MPEG-1 L1-3
M4V	MPEG-4 ASP @ L5 MPEG-4 SP	1080P	30 fps	N/A
FLV	Sorenson Spark	1080P	30 fps	MPEG-1 L1-3 PCM / G.711



To open a video file:

1. Connect your input device to the LED projector.
2. Turn on the LED projector to launch the Media Center's onscreen display menu.
3. Select the input device you wish to access.



4. Select **Video**.



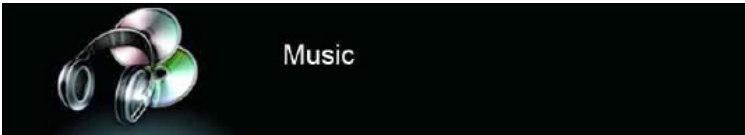
5. Refer to the control panel grid to help you browse and select the file from your input device.
6. Press  to open the selected folder or file.
7. After opening the file, press  on the control panel to launch the video file's control panel grid.



Audio

File Type	Sample Rate (KHz)	Bit Rate (Kbps)
MP1/ MP2/ MP3	8-48	8—320
WMA	22-48	5—320
OGG	8-48	64—320
ADPCM-WAV	8-48	32—384
PCM-WAV	8-48	128—1536
AAC	8-48	8—256

To play audio files, refer to the following steps:

1. Connect your device to the LED projector.
2. Turn on the LED projector to launch the Media Center's onscreen display menu.
3. Select **Music**.



4. Refer to the control panel grid to help you browse and select the file from your input device.
5. Press  to open the selected folder or file.
6. After opening the file, press  on the control panel to launch the audio file's control panel grid.



Document

File Type	Support Version	Pages /Lines Limitation	Size Limitation	Comment
Adobe PDF	PDF 1.0 PDF 1.1 PDF 1.2 PDF 1.3 PDF 1.4	Up to 100 pages (One File)	Up to 75 MB	-
Microsoft® Office Word	Microsoft® Office Word 1995, Microsoft® Office Word 1997, Microsoft® Office Word 2000, Microsoft® Office Word 2002, Microsoft® Office Word 2003	Because the office viewer does not load all pages of a Microsoft® Word file at the same time, there are no obvious page or line limitations.	Up to 100 MB	Does not support bold text in Simple Chinese font
Microsoft® Office Excel	Microsoft® Office Excel 1995 Microsoft® Office Excel 1997, Microsoft® Office Excel 2000, Microsoft® Office Excel 2002, Microsoft® Office Excel 2003, Microsoft® Office Excel 2007 (.xlsx), Microsoft® Office Excel 2010 (.xlsx) Microsoft® Office Excel XP	Row Limit: up to 595 Column Limit: up to 256 Sheet: up to 100 Note: These 3 listed limitations do not appear altogether in just one file.	Up to 15 MB	Does not support password-protected sheets
Microsoft® Office PowerPoint	Microsoft® Office PowerPoint 1997, Microsoft® Office PowerPoint 2000, Microsoft® Office PowerPoint 2002, Microsoft® Office PowerPoint 2003, Microsoft® Office PowerPoint 2007 (.pptx), Microsoft® Office PowerPoint 2010 (.pptx), Microsoft® Office PowerPoint XP, .ppx, .ppsx	Up to 1000 pages (one file)	Up to 19 MB	Does not support slideshow order

To view documents, refer to the following steps:

1. Connect your device to the LED projector.
2. Turn on the LED projector to launch the Media Center's onscreen display menu.
3. Select the input device you wish to access.
4. Select **Document**.



5. Refer to the control panel grid to help you browse and select the file from your input device. Press
6. Press  to open the selected folder or file.
7. After opening the file, press  on the control panel to launch the **Document** control panel grid.

Multi-language versions

Download other language versions of this E-Manual via this website: <http://support.asus.com>

Appendices

Federal Communications Commission Statement

This equipment has been tested and found to comply with the limits for a class B digital device, pursuant to Part 15 of the Federal Communications Commission (FCC) rules. These limits are designed to provide reasonable protection against harmful interference in a residential installation. This equipment generates, uses, and can radiate radio frequency energy and, if not installed and used in accordance with the instructions, may cause harmful interference to radio communications. However, there is no guarantee that interference will not occur in a particular installation. If this equipment does cause harmful interference to radio or television reception, which can be determined by turning the equipment off and on, the user is encouraged to try to correct the interference by one or more of the following measures:

- Reorient or relocate the receiving antenna.
- Increase the distance between the equipment and receiver.
- Connect the equipment to an outlet on a different circuit than that which the receiver is connected to.
- Consult the dealer or an experienced radio/TV technician for help.

This device complies with Part 15 of the FCC Rules. Operation is subject to the following two conditions:

1. This device may not cause harmful interference, and
2. This device must accept any interference that may cause undesired operation.

Regional notice for California

This product contains chemicals, including lead, known to the State of California to cause birth defects or other reproductive harm. Wash hands after handling.

Canadian Department of Communications Statement

This digital apparatus does not exceed the Class B limits for radio noise emissions from digital apparatus set out in the Radio Interference Regulations of the Canadian Department of Communications.

This class B digital apparatus complies with Canadian ICES-003.

Global Environmental Regulation Compliance and Declaration

ASUS follows the green design concept to design and manufacture our products, and makes sure that each stage of the product life cycle of ASUS product is in line with global environmental regulations. In addition, ASUS disclose the relevant information based on regulation requirements.

Please refer to <http://csr.asus.com/english/Compliance.htm> for information disclosure based on regulation requirements ASUS is complied with:

Japan JIS-C-0950 Material Declarations

EU REACH SVHC

Korea RoHS

Swiss Energy Laws

ASUS Recycling/Takeback Services

ASUS recycling and takeback programs come from our commitment to the highest standards for protecting our environment. We believe in providing solutions for you to be able to responsibly recycle our products, batteries, other components as well as the packaging materials. Please go to <http://csr.asus.com/english/Takeback.htm> for detailed recycling information in different regions.

Support PC Timings

HDMI (PC)

Resolution	Mode	Refresh rate (Hz)	H-frequency (kHz)	Clock (MHz)
640 x 480	VGA_60	59.940	31.469	25.175
800 x 600	SVGA_60	60.317	37.879	40.000
1024 x 768	XGA_60	60.004	48.363	65.000
1280 x 800	WXGA_60	59.810	49.702	83.500
1280 x 960	1280 x 960_60	60.000	60.000	108
1360 x 768	1360 x 768_60	60.015	47.712	85.500
1440 x 900	WXGA+_60	59.887	55.935	106.500

HDMI (Video)

Timing	Resolution	Vertical frequency (Hz)	H-frequency (kHz)	Dot Clock Frequency (MHz)
480p	720 x 480	59.94	31.47	27
576p	720 x 576	50	31.25	27
720/50p	1280 x 720	50	37.5	74.25
720/60p	1280 x 720	60	45.00	74.25
1080/50i	1920 x 1080	50	28.13	74.25
1080/60i	1920 x 1080	60	33.75	74.25

Mini VGA

Resolution	Mode	Refresh rate (Hz)	H-frequency (kHz)	Clock (MHz)
640 x 480	VGA_60	59.940	31.469	25.175
800 x 600	SVGA_60	60.317	37.879	40.000
1024 x 768	XGA_60	60.004	48.363	65.000
1280 x 800	WXGA_60	59.810	49.702	83.500
1280 x 1024	SXGA_60	60.020	63.981	108.000
1280 x 960	1280 x 960_60	60.000	60.000	108
1366 x 768	1366 x 768_60	60.015	47.7	85.86
1440 x 900	WXGA+_60	59.887	55.935	106.500

Specifications for P2 LED projector series

		P2B	P2M	P2E
Display	Display Technology	0.45" DLP®		
	Light Source	R/G/B LED		
	Light Source Life	30,000 hours (max)		
	True Resolution (native)	WXGA 1280x800		
	Light Output	350 Lumens	500 Lumens	350 Lumens
	Contrast Ratio	3500:1 DCR		
	Color Saturation (NTSC)	100%		
	Display Colors	16.7 M		
Projection Lens	Throw Ratio	1.1 (42" @1m)		
	Projection Distance	0.5 ~ 3m		
	Projection/Screen Size	20 ~ 120 inches		
	Projection Offset	100 ± 5 %		
	Zoom Ratio	Fixed		
Video Features	Picture Modes	7 Modes (Standard Mode, Black board, White board, Dynamic Mode, Game, Scenary Mode, Theater Mode)		
	Keystone adjustment	Digital (Up to +/- 40 degree)		
	Auto Keystone	Yes		
	Aspect Ratio	16:10/ 16:9 / 4:3		
	Projector Placement	Front Table, Rear Table, Front Ceiling, Rear Ceiling		
Audio Features	Built-in speakers	Yes, 1 speaker (1.5W)		
Signal Frequency	Analog Signal Frequency	31.5~55.9 KHz(H)/60 Hz(V)		

(continued on the next page)

		P2B	P2M	P2E
Power	Power On Mode	30W	50W	27W
	Standby Mode	<0.5 W		
Noise	Acoustic Noise	32dB (Standby mode)	34dB (Standby mode)	32dB (Standby mode)
		25dB (Theater mode)	30dB (Theater mode)	25dB (Theater mode)
Input / Output	Audio Out	Earphone out		
	Card Reader	1 x Micro SD card slot for multimedia playback	1 x Micro SD card slot for multimedia playback	N/A
	USB port	Yes		N/A
Multimedia Formats Supported	Video	Yes		N/A
	Audio	Yes		N/A
	Picture	Yes		N/A
	Document Viewer	Yes		N/A
Mechanical Design	Chassis Colors	White	Black	
	Tripod Socket	Yes		
	Supporting Stand	Yes		

(continued on the next page)

		P2B	P2M	P2E
Mechanical Design	On-machine Buttons	Media Center, Input, Power	Image position, Brightness, Image Quality, Image Setting, Keystone Enter, Volume, Splendid, Contrast, Setup	VGA, HDMI, Power, Image Position, Brightness, Image Quality, Image Setting, Keystone, Keystone, Enter, Volume, Splendid, Contrast, Setup
Security	Kensington lock	Yes		
Dimension	Physical Dimension	142.4mm x 130mm x 34.6mm		
	Box Dimension	235mm x 179mm x 113mm		
Weight	Net Weight (Esti.)	666g	532g	502g
	Gross Weight (Esti.)	1.4kg	1.2kg	1.2kg
Operating Temperature		0°C ~ 40°C		
Operating Humidity		20 ~ 90%		
Accessories		carrying bag, power adapter, power cord, D-Sub cable, quick start guide, remote control, warranty card		
Regulation Approvals		FCC/UL/CE/CB/CCC/C-tick/VCCI/PSE/CU		

- * Specifications are subject to change without prior notice.
- ** Product availability may vary by region.
- ** All brand and product names mentioned are trademarks of their respective companies.

