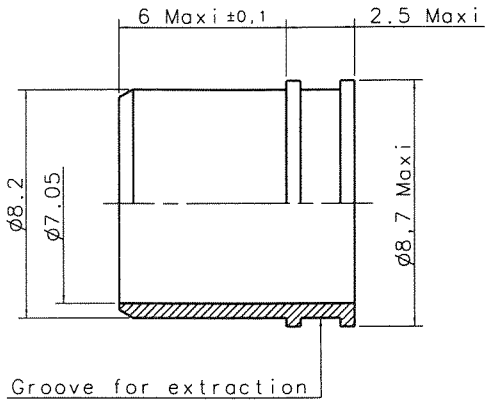


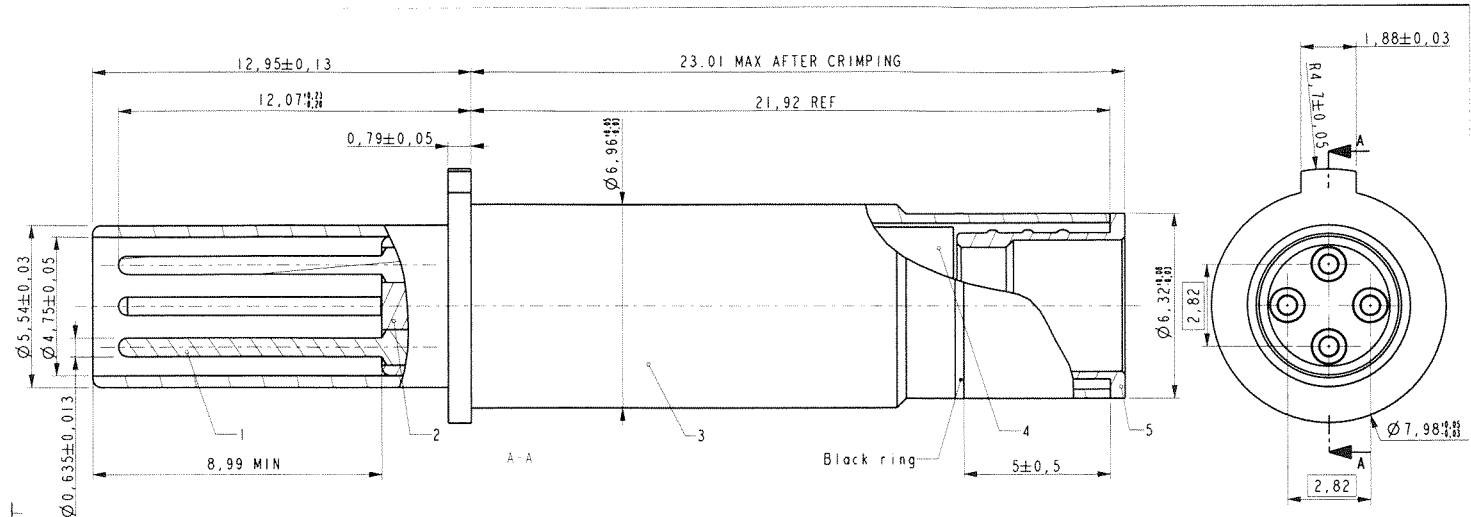
DANS LE BUT CONSTANT D'AMELIORER SES PRODUITS, Amphenol Socapex se reserve le droit d'en modifier toute cote ou caracteristique.

[IMP 007 B]



P/N 140487

**ALIGNMENT BOOT FOR SIZE 8
QUADRAX ARINC 600**



7. MATES WITH ARINC QUADRAX SOCKET 3308.0161.000
6. CRIMPING TOOLS
 OUTER CONTACT: M22520/5-01 TOOL, M22520/5-45 DIE SET (HEX CLOSURE B)
 INNER CONTACTS: M22520/2-01 TOOL, DANIELS RT09 (M22520/2-37) POSITIONNER
5. TERMINATES QUADRAX CABLE DRAXA FILECA F-4703-2
4. DRAWING ILLUSTRATES FINAL ASSEMBLY. CONTACT COMPONENTS ARE SHIPPED UNASSEMBLED. INSTALLATION INSTRUCTIONS (NOT ILLUSTRATED) ARE PACKAGED WITH EACH ASSEMBLY. PACKAGE PER PRODUCTION PROCESS SHEET.
3. MATERIALS
 OUTER & INNER CONTACTS: BERYLLIUM COPPER PER ASTM-B-196
 SHIELD FERRULE: BRASS PER ASTM B453 OR QQ-B-626
 FRONT INSULATOR & SPACER INSULATOR: TFE RESIN PER ASTM 3651
2. FINISH
 GOLD PLATED PER MIL-G-45204 TYPE II, GRADE C, CLASS I (0,0013 MIN)
 OVER NICKEL PLATE PER QQ-N-290 (0,0013 MIN)
1. CONTACTS MEET THE APPLICABLE REQUIREMENTS OF ABS0973

NOTES:

POS	QTY	DESCRIPTION
5	1	SHIELD FERRULE
4	1	SPACER INSULATOR
3	1	OUTER CONTACT
2	1	FRONT INSULATOR
1	4	INNER CONTACT

ISSUE	EVOLUTION	DATE	NAME	ISSUE	EVOLUTION	DATE	NAME
<i>This Pro/Eng drawing is AALB-G property and no part may be reproduced or distributed in any form without the prior permission in writing of AALB-G.</i>							
DESIGNED R. PERQUIN	GENERAL LIMITS ± 0,1	SCALE 8/1	AALB-G Am Kleinbahnhof 4 D-66740 SAARLOUIS Phone: +49 (0)16831/9810-23 Fax: +49 (0)16831/9810-20				
DATE: 21-Jun-04	SURFACE ROUGHNESS	A3					
CHECKED DATE:	MATERIAL						
APPROVED DATE:	APPLICABLE DOCUMENT:	TITLE					
			Contact pin quadrax Electrical connector Type arinc / EN3545				
			A				
			ISSUE				

N° 3308_0171_000

Dimensions in mm

ABS 0973 M08A / 3308 0171 001
 = 3308 0171 000 + 140487

MODIFICATIONS	A	Plan original	ECHELLE

Amphenol Socapex

BP 29 - 74311 THYEZ CEDEX

DESSIN: Convert LE:01/08/05	
TECHNIQUE: B. VUILLE	
A	
199-PLC-049-00 1/1	