

Amphenol SOCAPEX



Dedicated Solutions
for Entertainment

www.amphenol-socapex.com

How to order a "Socapex" from Socapex

SOCAPEX 19 pins UL N° E160967(01) Certification

Black coating
Split backshell
7 pre-mate earth contacts

Female panel mount receptacle



SL GD EF 419 AR



Male plug



SL D FMD 419 AR



Black coating
Split backshell

Female panel mount receptacle



SL D EF 419 AR



Male plug



SL D FMD 419 AR



White plating
Split backshell
7 pre-mate earth contacts

Female panel mount receptacle



SL G EF 419 AR

Male plug



SL FMD 419 AR

White plating
Split backshell

Female panel mount receptacle



SL EF 419 AR

Male plug



SL FMD 419 AR

SOCAPEX 19 pins UL N° E160967(01) Certification

Female inline receptacle



SL GD FFDR 419 AR

Male panel mount plug



SL D EME 419 AR

Female inline receptacle



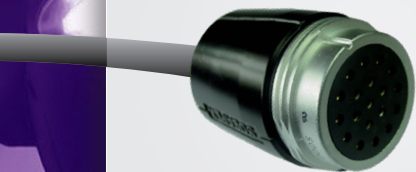
SL D FFDR 419 AR

Male panel mount plug



SL D EME 419 AR

Female inline receptacle



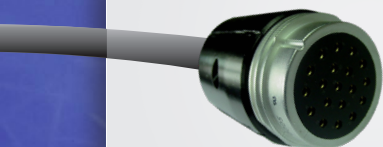
SL G FFDR 419 AR

Male panel mount plug



SL EME 419 AR

Female inline receptacle



SL FFDR 419 AR

Male panel mount plug



SL EME 419 AR

Choose the best for your stage lighting

How to order a "Socapex" from Socapex...

SOCAPEX 19 pins UL N° E160967(01) Certification

Black coating
Monopiece backshell PG29
Cable diameter 15 mm
(0,59 in) to 24 mm (0,94 in)

Female panel mount receptacle



■ SL GD EF 419 AR

Male plug



■ SL D FMD PG29 419 AR

Black coating
Monopiece backshell PG36
Cable diameter 24 mm
(0,94 in) to 34 mm (1,34 in)

Female panel mount receptacle



■ SL GD EF 419 AR

Male plug



■ SL D FMD PG36 419 AR

SOCAPEX 7 pins UL N° E160967(01) Certification

Black coating
Split backshell

Female panel mount receptacle



SL D EF 37 Y

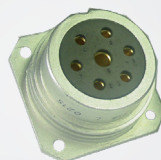
Male plug



SL D FMD 37 Y

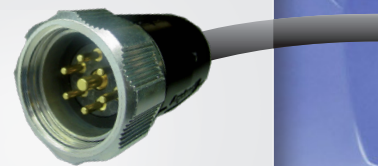
White plating
Split backshell

Female panel mount receptacle



SL D EF 37 Y

Male plug



SL FMD 37 Y

SOCAPEX 19 pins UL N° E160967(01) Certification

Female in line receptacle



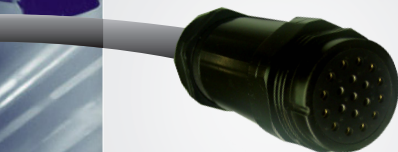
■ SL GD FFDR PG29 419 AR

Male panel mount plug



■ SL D EME 419 AR

Female in line receptacle



■ SL GD FFDR PG36 419 AR

Male panel mount plug



■ SL D EME 419 AR

SOCAPEX 7 pins UL N° E160967(01) Certification

Female in line receptacle



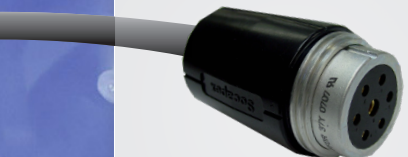
SL D FFDR 37 Y

Male panel mount plug



SL D EME 37 Y

Female in line receptacle



SL FFDR 37 Y

Male panel mount plug



SL EME 37 Y

Backshell

Straight or right-angle backshell:

Connector size	Backshell reference	
	Straight	Right-angle
	Black (non-conductive)	
40	47380N	47384N

Connector size	Backshell reference	
	Straight	Right-angle
	Nickel (conductive)	
40	47380NI	47384NI

Connector size	Backshell reference	
	Straight	Right-angle
	Black (non-conductive)	
30	47379N	47383N

Connector size	Backshell reference	
	Straight	Right-angle
	Nickel (conductive)	
30	47379NI	47383NI

Choose the best for your stage lighting

Solutions for show control

THE "SOCA" SL 19 PINS

- ▶ 19 pins configuration (layout 419AR), with high strength-weight ratio for stage lighting
- ▶ UL recognized, RoHS version
- ▶ Supplied with solder gold plated contacts (up to 25A)
- ▶ Closed entry female contacts & SLG version with 7 first mate last break contacts provide electrical safety
- ▶ Split backshell with efficient cable clamp for simple wiring and maintenance
- ▶ Monopiece backshell with IP67 sealing for outdoor applications

www.amphenol-socapex.com



THE "SOCA" SL 7 PINS (LAYOUT 37Y)

- ▶ For Hoist Motor applications
- ▶ UL recognized, RoHS version
- ▶ Layout supplied with high quality gold plated solder contacts and closed entry female contacts for electrical safety
- ▶ Aluminium alloy shell and reinforced locking ring with excellent reliability and robustness
- ▶ Split backshell with efficient cable clamp for simple wiring and maintenance

www.amphenol-socapex.com



Hoist Motors

Stage Lighting

BROADCAST SOLUTIONS

- ▶ 110 connector - fully compliant to SMPTE 304M for HDTV broadcast camera applications. Both intermatable and interchangeable with existing SMPTE 304M compliant connectors
- ▶ FS12A twelve-channel fiber optic connector for high channel count, deployable broadcast applications
- ▶ Hermaphroditic MinTAC dual-channel fiber optic connector for audio, lighting and broadcast applications. Ideal for indoor audio and lighting consoles and systems and outdoor environments

www.fibersystems.com



Dimmers

MP SERIES

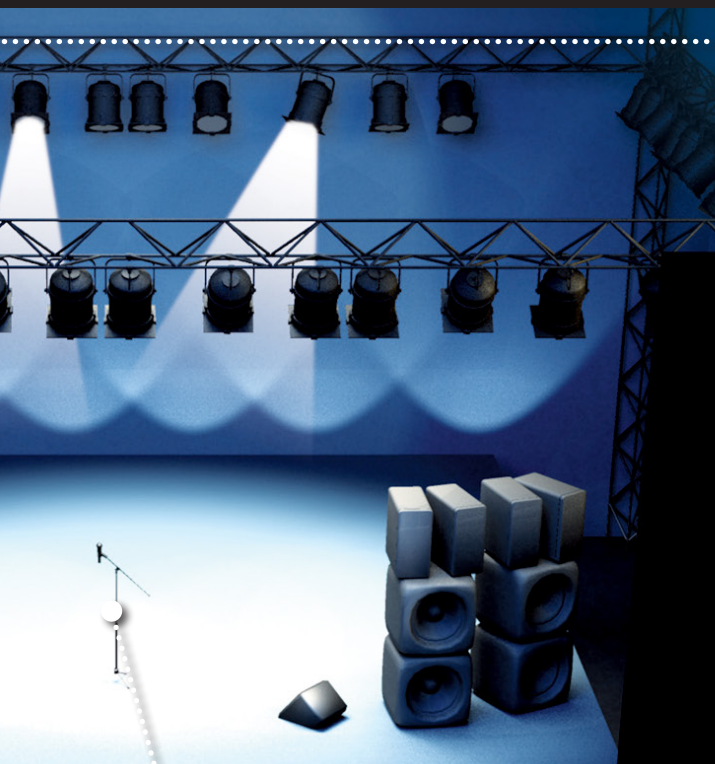
- ▶ Ideal for audio snake cables, concert touring systems and outside broadcast applications

www.amphenolaudio.com



Broadcast

Audio & Consoles



C 146

Heavy/mate connectors - for Power and high poles

- ▶ For applications requiring high power or high number of poles
- ▶ Up to 250 A or up to 280 poles

www.amphenol.de

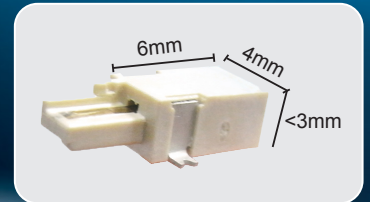


SSL SERIES

SSL 1.1 & 1.2

- ▶ For indoor to outdoor lamps and luminaires
- ▶ Board to board connection

www.amphenolltw.com



Displays

Amphenol

HYBRID CONNECTOR - IP X8 WATERPROOF HYBRID CONNECTORS

- ▶ Designed for lighting control protocols & applications

www.amphenolltw.com

RUGGED & SEALED ETHERNET CONNECTOR - RJ & USB FIELD

- ▶ For show control applications
- ▶ Allows you to use an Ethernet Class D / Cat5E and class E / Cat6 connection for 10BaseT, 100 BaseTX or 1000 BaseT networks for outdoor applications
- ▶ Use a standard RJ45 cordset in a composite or metallic plug which will protect it from shocks, dust and fluids
- ▶ Robust & sealed (IP67) plastic or metallic shell with quarter turn coupling to secure your network
- ▶ Also available rugged and sealed USB connectors & USB memory sticks

www.amphenol-socapex.com



AC SERIES XLR CONNECTORS

- ▶ For audio signals in professional sound applications such as microphones, amplifiers, speakers and public address systems

www.amphenolaudio.com



Solutions for low profile LED lighting luminaire

- ▶ Designed for low profile LED lighting luminaires


www.amphenolltw.com



Amphenol SOCAPEX

CONTACT US

Amphenol Socapex
948 promenade de l'arve, BP29
74311 THYEZ - FRANCE

 www.amphenol-socapex.com
Contact@amphenol-socapex.com

 Sales & Technical support :
+33 (0)4 50 89 28 00



Your local distributor

DOC-000100-ANG

Amphenol Socapex

We reserve the right to **modify our products** in any way we deem necessary.
Any duplication is **prohibited**, unless approved in writing.
Designed by **AMPHENOL SOCAPEX** - July 2019

