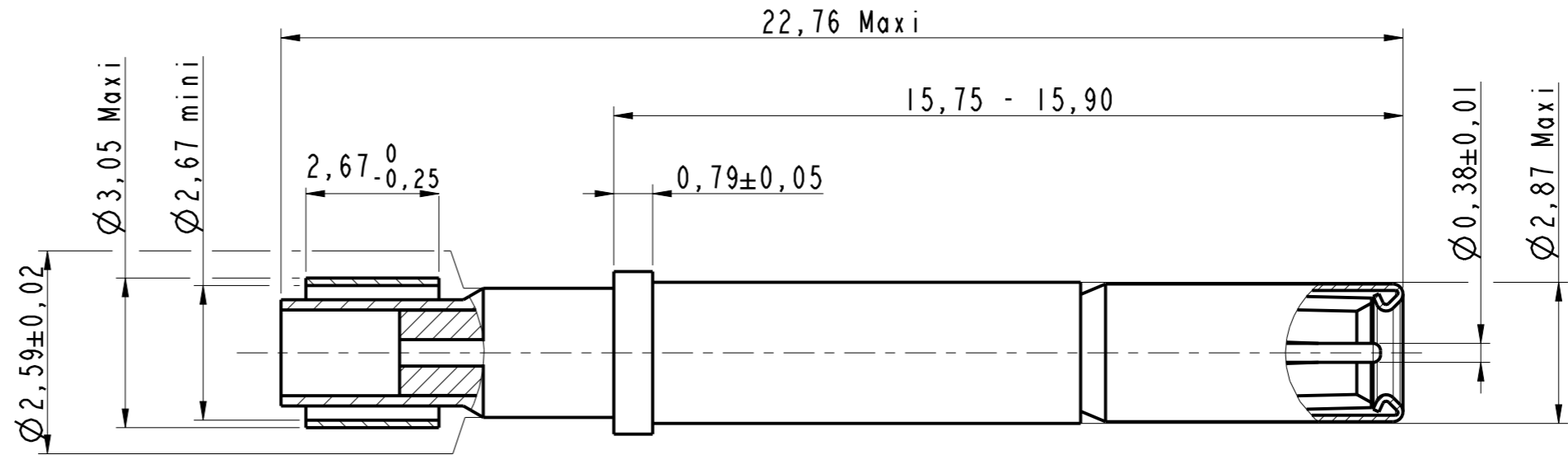
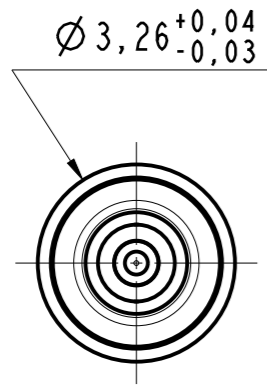
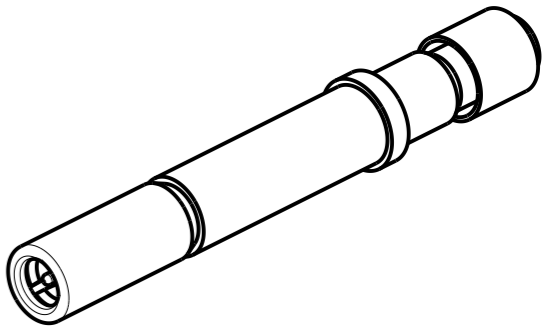


DANS LE BUT CONSTANT D'AMELIORER SES PRODUITS, Amphenol Socapex SE RESERVE LE DROIT D'EN MODIFIER TOUTE COTE OU CARACTERISTIQUE.
IMP 036 A



SOCKET CRIMP COAX CONTACT
SIZE 16
P/N : 070248
M39029/77-428



NOTE :

- ① - Crimping tool :
 - Inner contact : Tool M22520/2-01, positionner M22520/2-35
 - Outer contact : Tool M22520/4-01, positionner M22520/4-02

MODIFICATIONS	A	Plan original	ECHELLE
			8

Amphenol Socapex
BP 29 - 74311 THYEZ CEDEX

DESSIN: Eric MONET le 21/12/16	
TECHNIQUE: L. LAGRANGE le 21/12/16	
A	
172-PLC-051-00	
	1/1